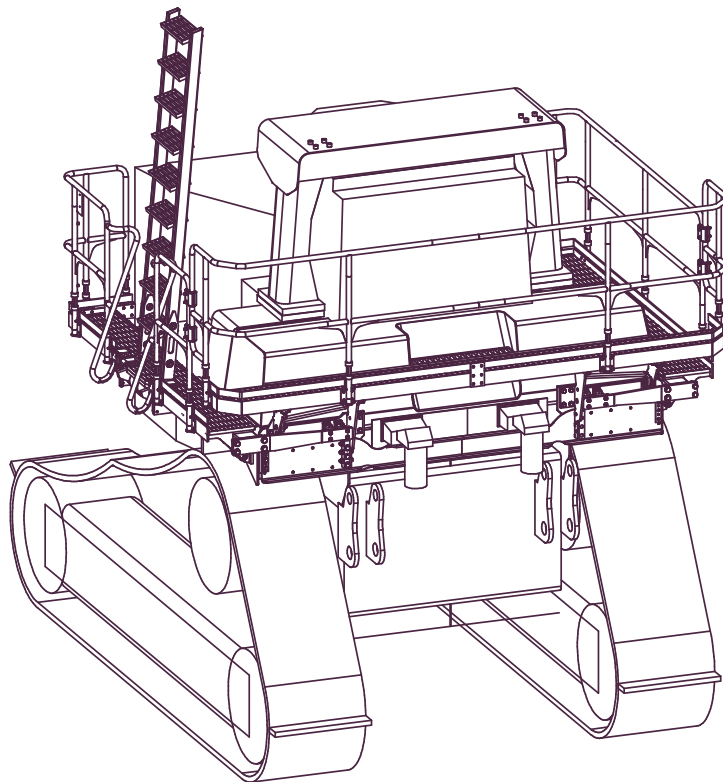




FOLDING LADDER

Manual for Cat D10T Dozer
Complete with Wrap-around Walkways
Aluminium Ladder



Model No.: PSA-D10T-F/L+RHW
Serial No.: D10T-ALU-FW- 001- ~
Date Manufactured:

FOLDING LADDER

Caterpillar D10T Dozer - Aluminium Ladder



CONTENTS

Page 3	Section 1 <u>Installation and Mounting instructions</u> Installation Drawings
15	Section 3 <u>Recommended Maintenance Procedure</u>
16	Section 4 <u>Operating Procedure</u>
	Section 5 <u>Drawings and Repair Parts lists</u>
17	5 Assembly Complete
18	5-1 Landing Assembly LHS Parts Lists
20	5-2 Landing Assembly RHS Parts Lists
22	5-3 Landing Assembly Rear Parts List
24	5-4 Ladder Assembly Parts List
25	5-5 Hydraulics-Hoses & Fittings Parts List
28	5-6 Electrical Controls Parts List
30	5-7 <u>Electrical System Wiring Diagram</u>

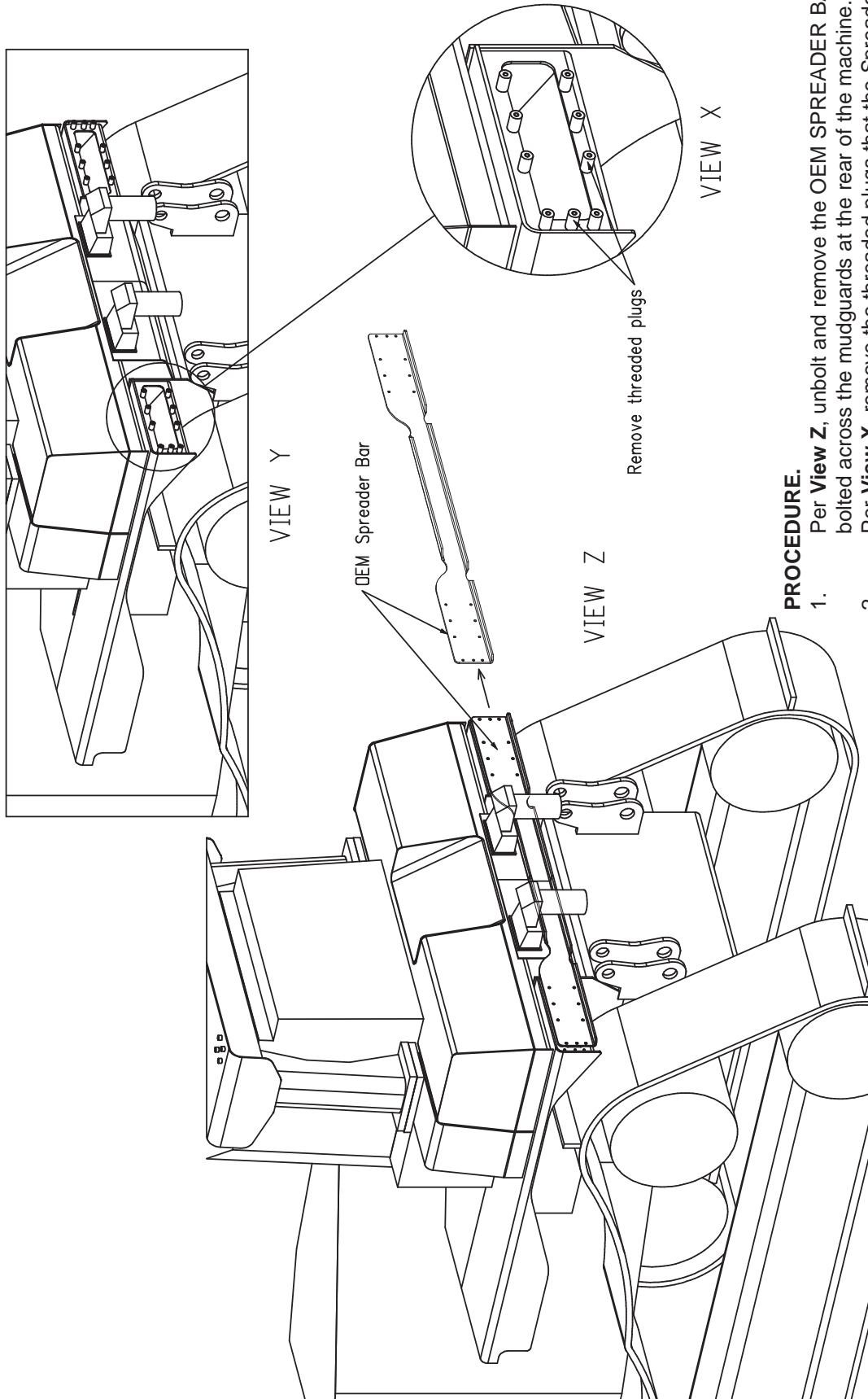
FOLDING LADDER

Caterpillar D10T Dozer- Aluminium Ladder



Section 1 Installation and Mounting Instructions

PS-24 923



PROCEDURE.

1. Per View Z, unbolt and remove the OEM SPREADER BAR bolted across the mudguards at the rear of the machine.
2. Per View X, remove the threaded plugs that the Spreader Bar bolted to.

USE SAFE WORKING AND LIFTING PRACTICES AT ALL TIMES.

FOLDING LADDER

Caterpillar D10T Dozer- Aluminium Ladder



Section 1 Installation and Mounting Instructions

PS-24 924 Sht 1

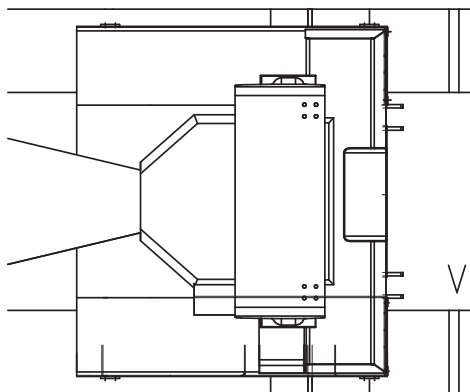
PROCEDURE

See Drawings 24 924 See Page 3 & 4

1. Fit the rear bolting pads against the internal reinforcement at the back end of the OEM mudguards. Weld them to the internal reinforcing and the mudguard inner and top/outer plates, as shown in all views on this drawing.
Note that all bevels on the bolting plates are to provide clearance over existing welds, not as weld preparations for this installation.
2. Measuring from the rear bolting plates, fit the side bolting plates on the sides of both mudguards using the measurements in **View V-1** and or the template as shown in **Views U-1** and **U-2**.

Note that the Template can be assembled to suit requirements on both sides of the dozer, per **Views U-1** and **U-2**.

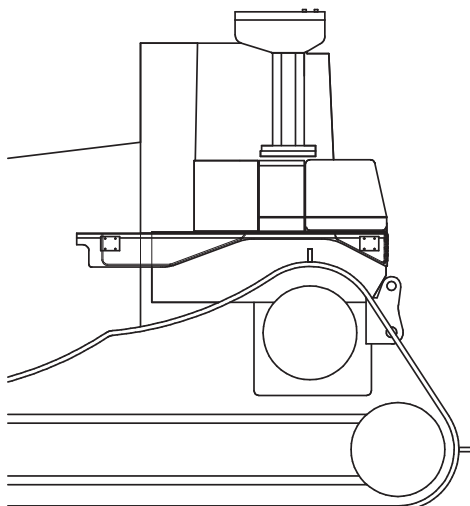
All welds are to be Cat SP to AS1554 unless specifically directed otherwise.
Use safe lifting, welding and working procedures at all times.



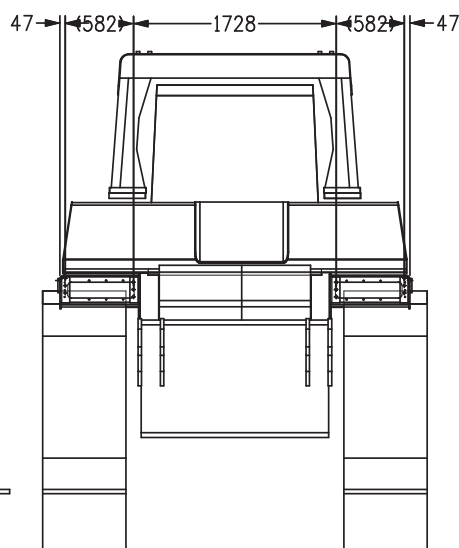
VIEW W-1

NOTE

Follow all on-site/Mine lifting and safety procedures when installing Power Step Ladder System to Dozer.



VIEW W-2



VIEW W-3

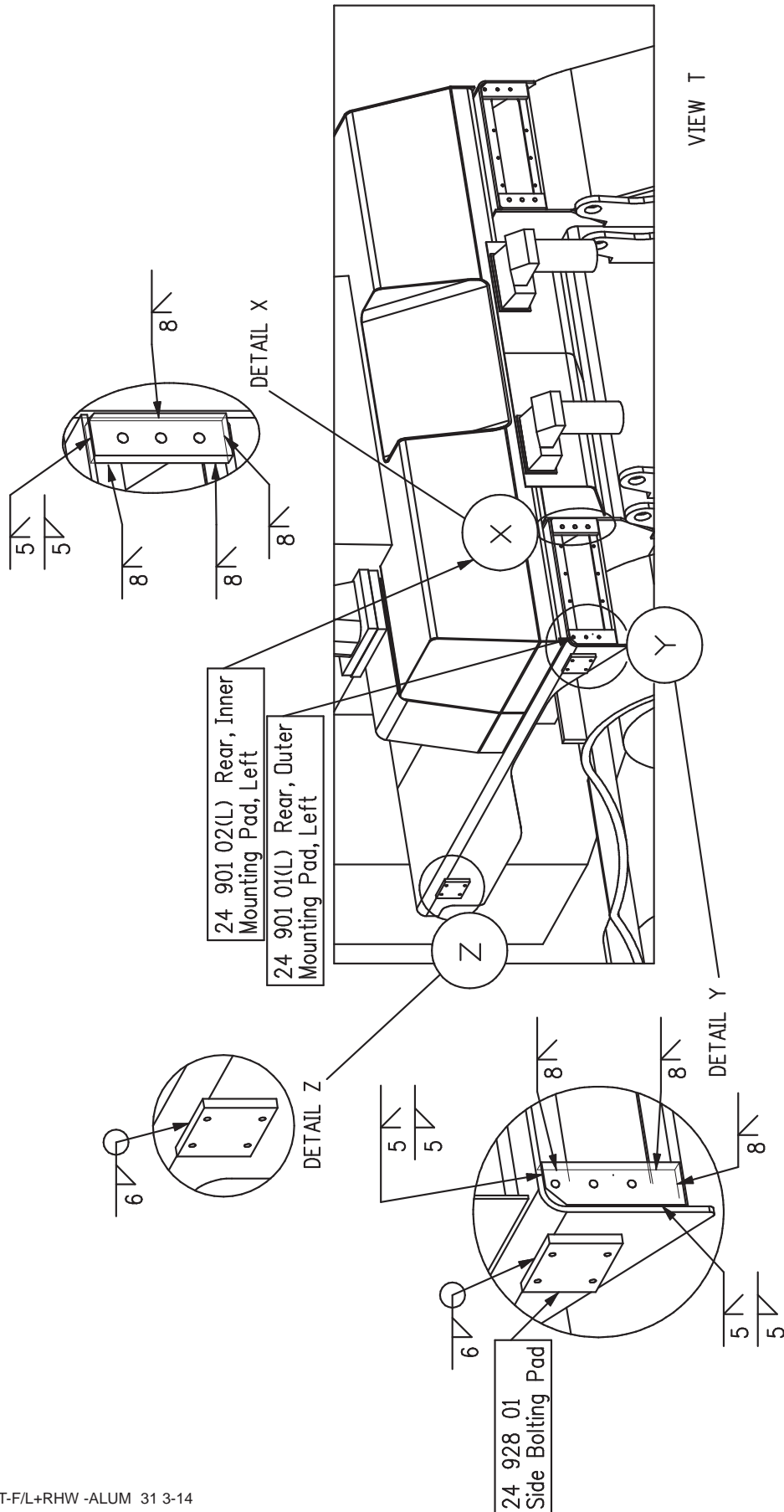
FOLDING LADDER

Caterpillar D10T Dozer- Aluminium Ladder



Section 1 Installation and Mounting Instructions

PS-24 924 Sht 2



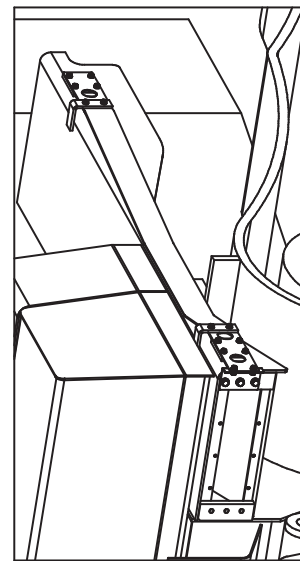
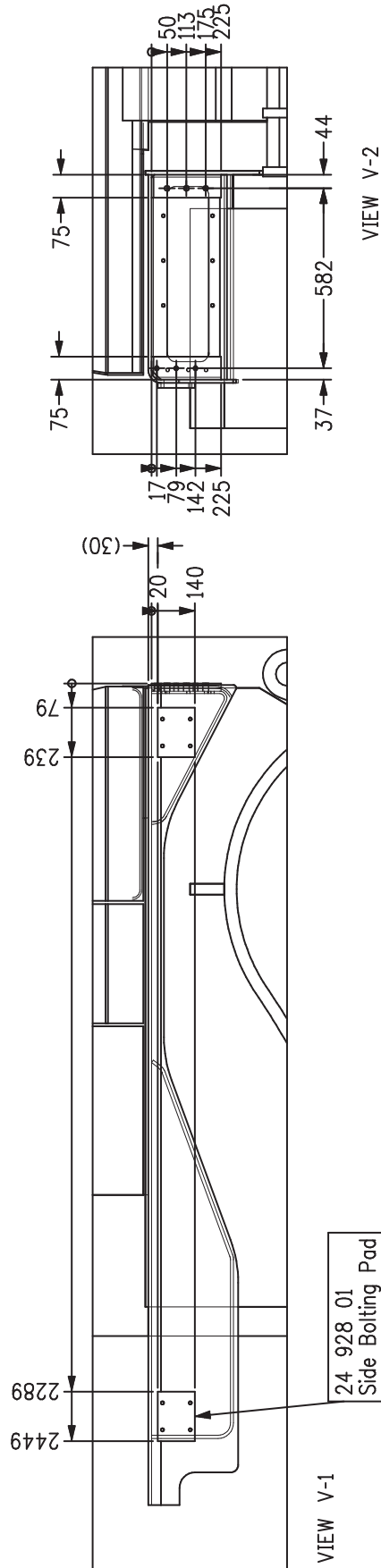
FOLDING LADDER

Caterpillar D10T Dozer- Aluminium Ladder

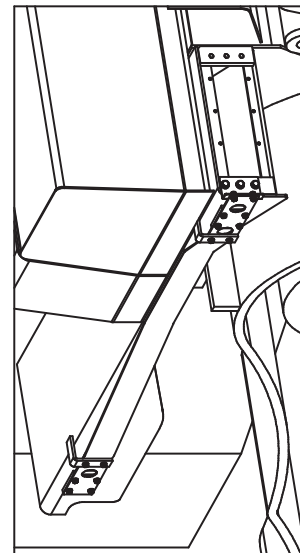


Section 1 Installation and Mounting Instructions

PS-24 924 Sht 3



VIEW U-2



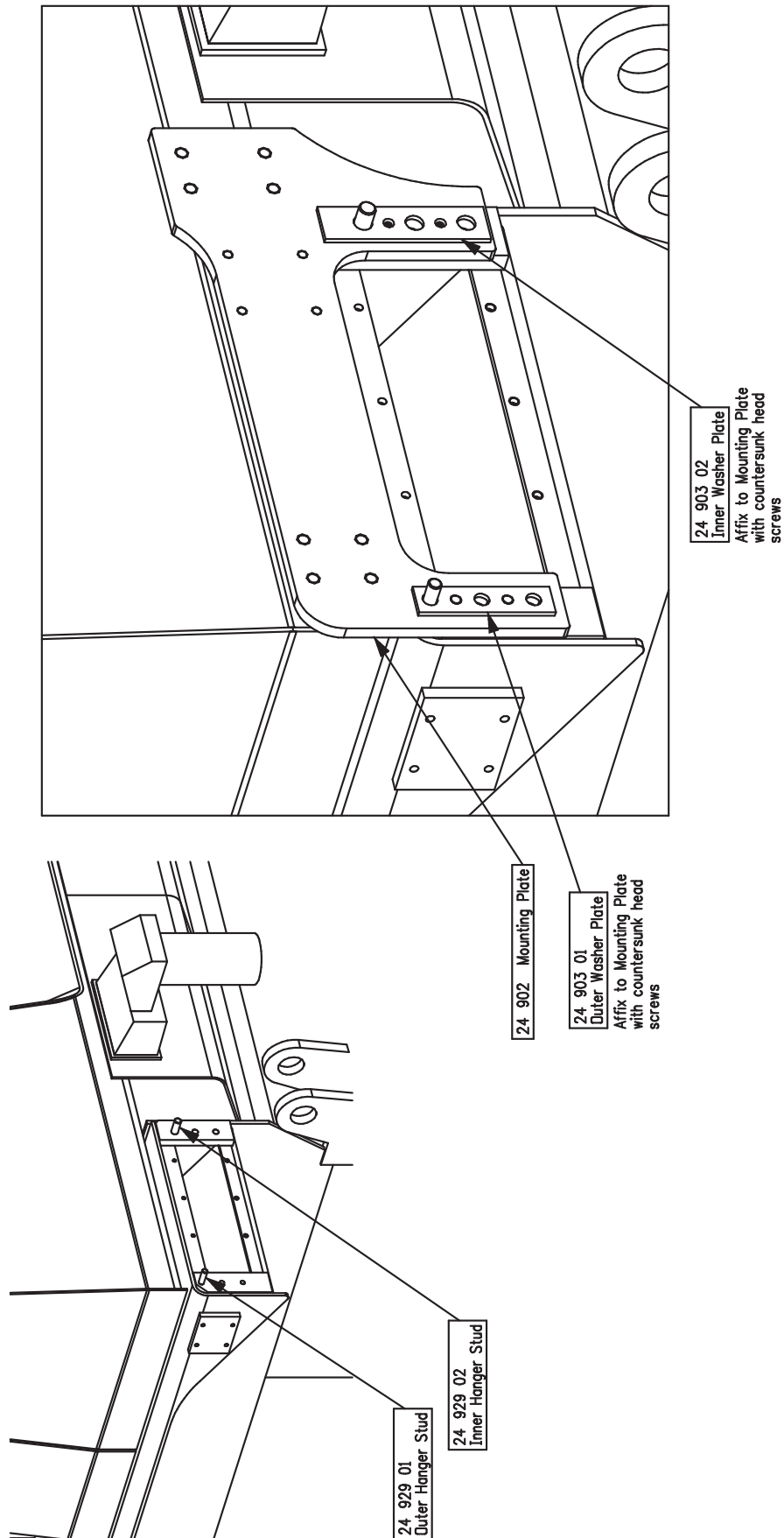
VIEW U-1

FOLDING LADDER

Caterpillar D10T Dozer- Aluminium Ladder



Section 1 Installation Instruction Drawings - 24 931



Fit the Mounting Plate/s and Washer Plates as shown, hanging on the Hanger Studs - do not bolt on at this stage.

FOLDING LADDER

Caterpillar D10T Dozer- Aluminium Ladder



Section 1 Installation and Mounting Instructions PS-24 932

NOTE

Follow all on-site/Mine lifting and safety procedures when installing Power Step Ladder System to Dozer.

PROCEDURE

See Dwg 24 932 See Page 9

- 1) Drill holes to suit in the OEM Rear Spreader to pick up the tapped holes in the mounting pads welded at the back of the mudguard. Fit the OEM Rear Spreader to the tractor per **View X**.
- 2) Fit the Outer Washer Plate and Inner Bolting Block to the mounting blocks, using bolts fitted through the new holes in the OEM spreader (per 1. above).
- 3) Bolt the Rear Platform Supports to the Mounting Plate and the Inner Bolting Block, per **Views Y and Z**.
- 4) Fit Bush Isolators to the pads on the sides of the mudguards.
- 5) Fit Bush Isolators to the boltholes at the top of the Mounting Plate per **View Z**. Fit the Torque Arm Isolator Bracket to the isolators attached to the mounting plate. Per View Y.

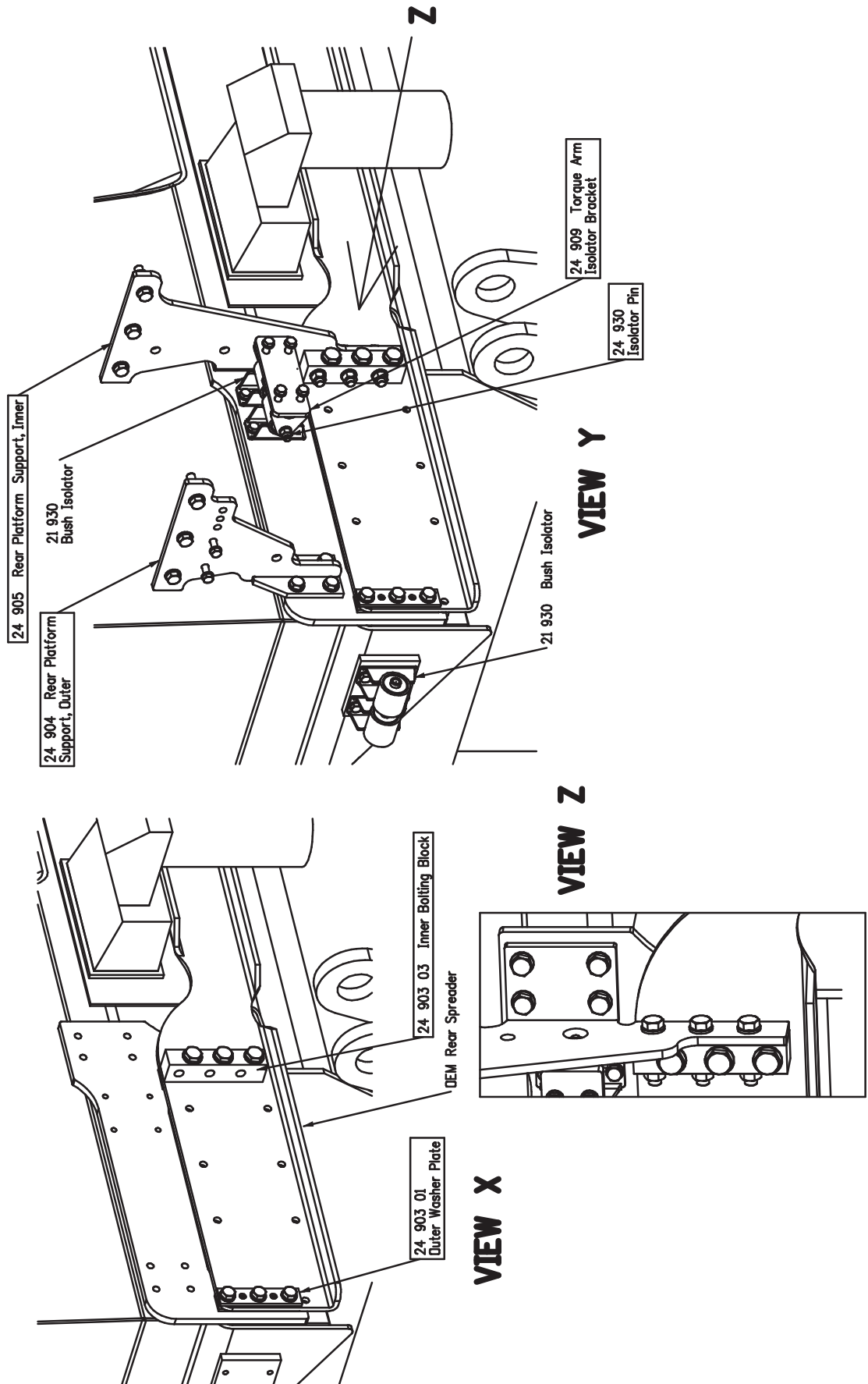
FOLDING LADDER

Caterpillar D10T Dozer- Aluminium Ladder



Section 1 Installation Instruction Drawings - 24 932

See Procedure - Page 8



FOLDING LADDER

Caterpillar D10T Dozer- Aluminium Ladder



Section 1 Installation Instruction Drawings - 24 934 Sht 1

See Drawings Page 10 & 11

NOTE

Follow all on-site/Mine lifting and safety procedures when installing Power Step Ladder System to Dozer.

PROCEDURE

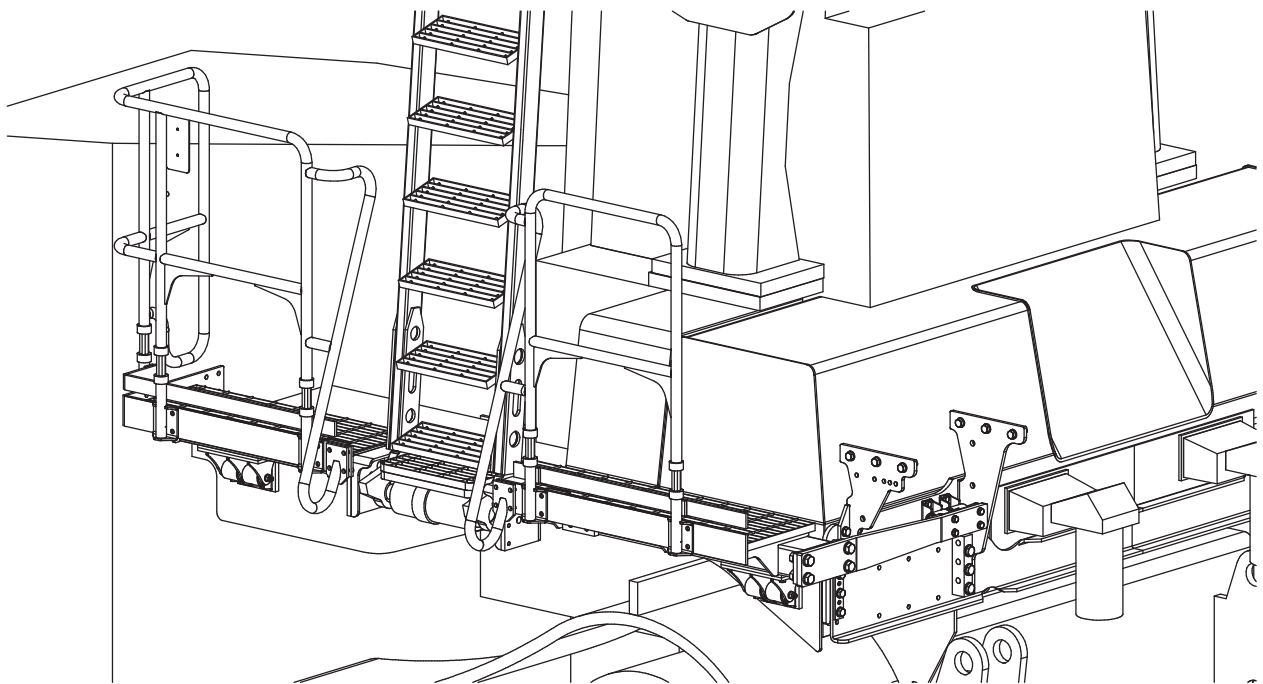
See Dwg. 24 934 Page 10 & 11

- 1) Fit the left side platform to the mudguard of the dozer. Fit Side Finger Brackets under the Beam of the platform per **View X**. Fit Isolators to the pads on the sides of the mudguard (front and back). Attach the Finger Brackets to the Isolators with Isolator Pins per **View X**.
- 2) Fit the Torque Arm across the arm flange at the back of the platform and the Torque Arm Isolator Bracket, per **View Y**.

USE SAFE LIFTING AND WORKING PROCEDURES AT ALL TIMES

Note that the platform will be supported by the mountings under it (i, above), it will not be restrained against rotation until the Torque Arm is attached at both ends per (ii).

Note. Installation of the Right Side Platform is the same as above, mirror imaged, on the RHS of the machine.



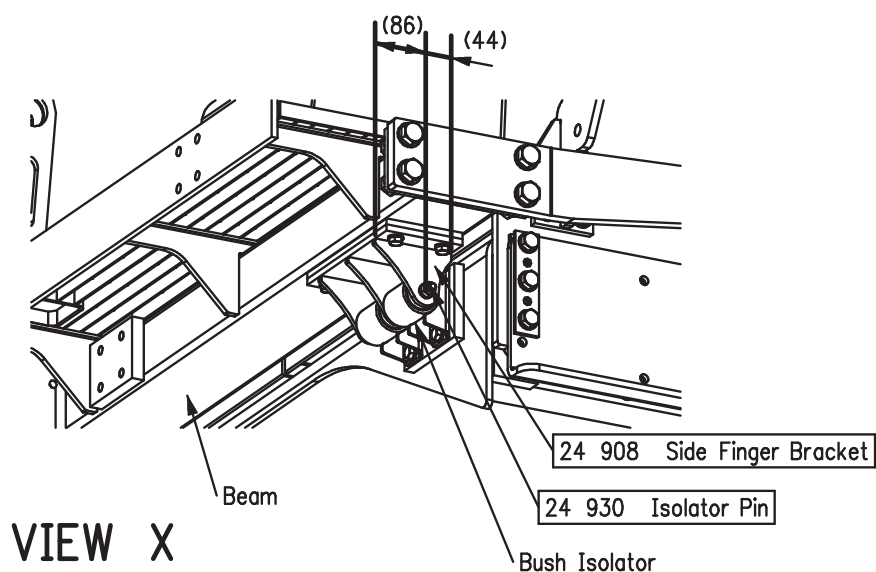
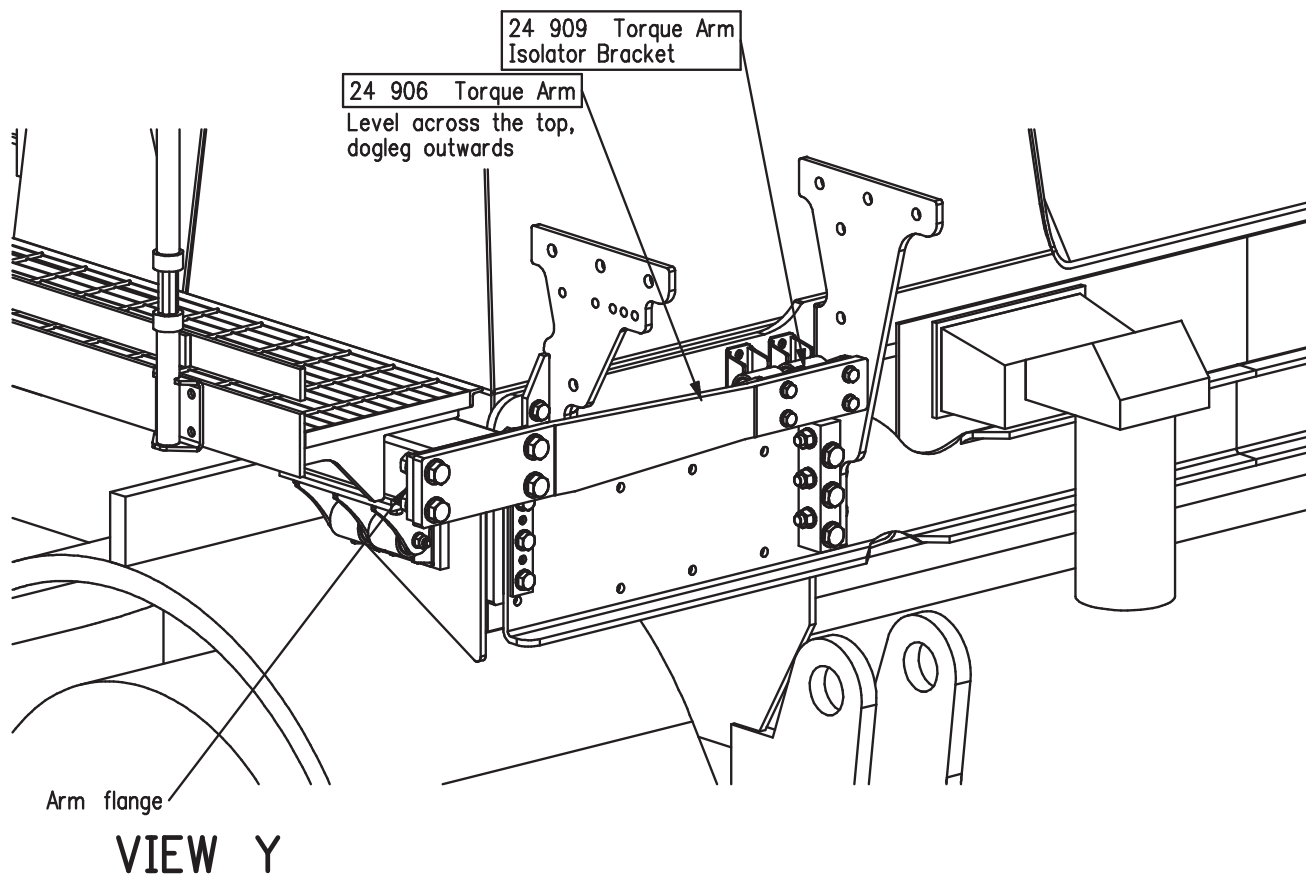
VIEW Z

FOLDING LADDER

Caterpillar D10T Dozer- Aluminium Ladder



Section 1 Installation Instruction Drawings - 24 934 Sht 2



FOLDING LADDER

Caterpillar D10T Dozer- Aluminium Ladder



Section 1 Installation Instruction Drawings - 24 935 & 24 936

NOTE

Follow all on-site/Mine lifting and safety procedures when installing Power Step Ladder System to Dozer.

PROCEDURE.

See Dwg 24 935 See Page 13 & 14

1. Fit the Rear Platform and Handrail Per **Views Y & Z** and the handrail links per **Detail U**.
2. Fit the Lateral Brace between the inner and outer rear platform supports per **View Y** and **Detail V**.
3. Per **Views X** and **W**, fit the vibration buffer and bracket to the outersupport. Push the buffer against the tank with a firm force before tightening the buffer bolts, using a lever and spacer to suit.

PROCEDURE.

See Dwg 24 936 See Page 15

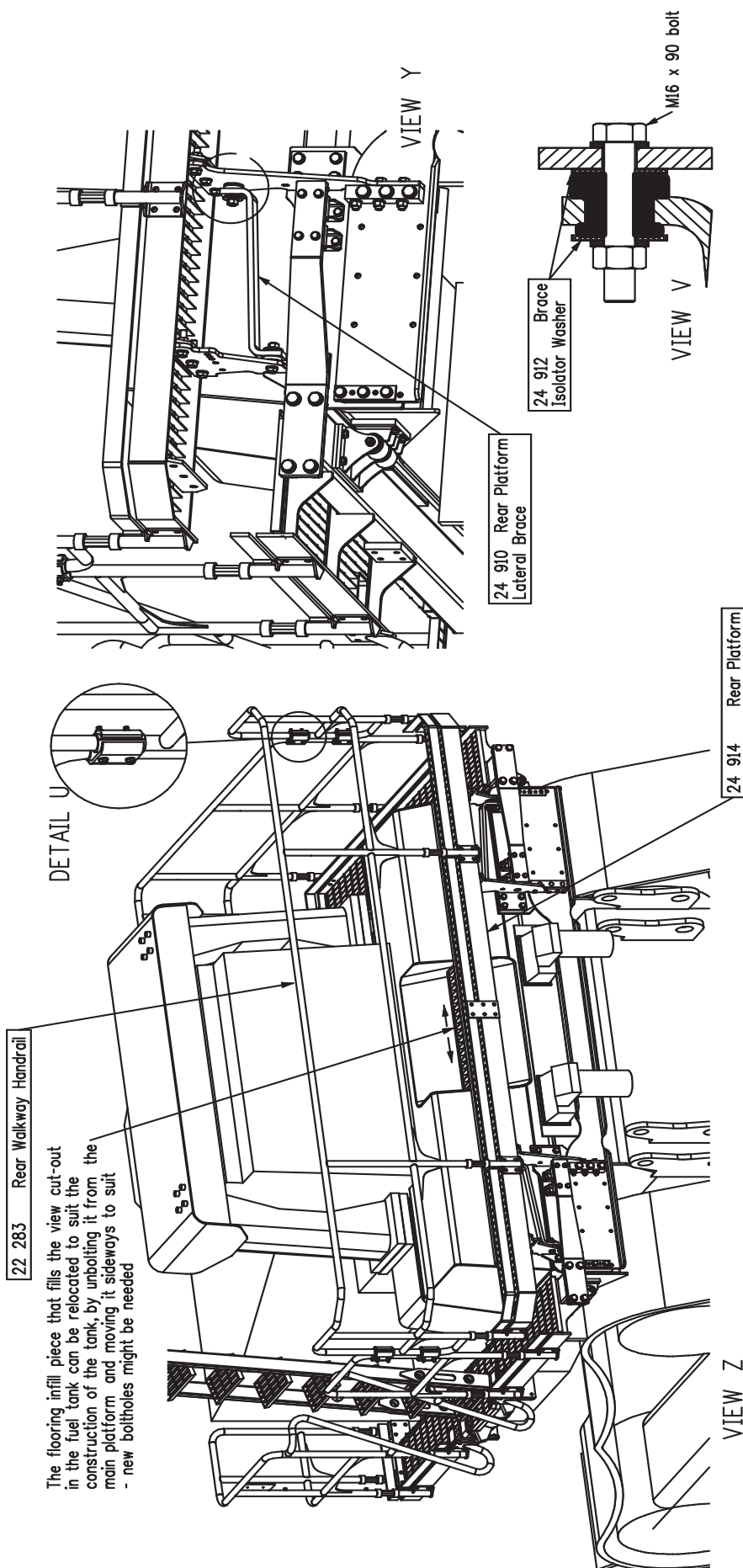
1. Cut out the little piece of floorplate from the rectangular frames beside the ladder accessway, per View Y.
2. Insert the two Guide Posts from below, up through the holes from ii, above, per View Z.
3. Affix the posts to the RHS member under the platform per Views W & X
4. Adjust the Stop Plates at the top of the Guide Posts so the ladder is held firm when in its' fully stowed position.

FOLDING LADDER

Caterpillar D10T Dozer- Aluminium Ladder



Section 1 Installation Instruction Drawings - 24 935 Sht 1

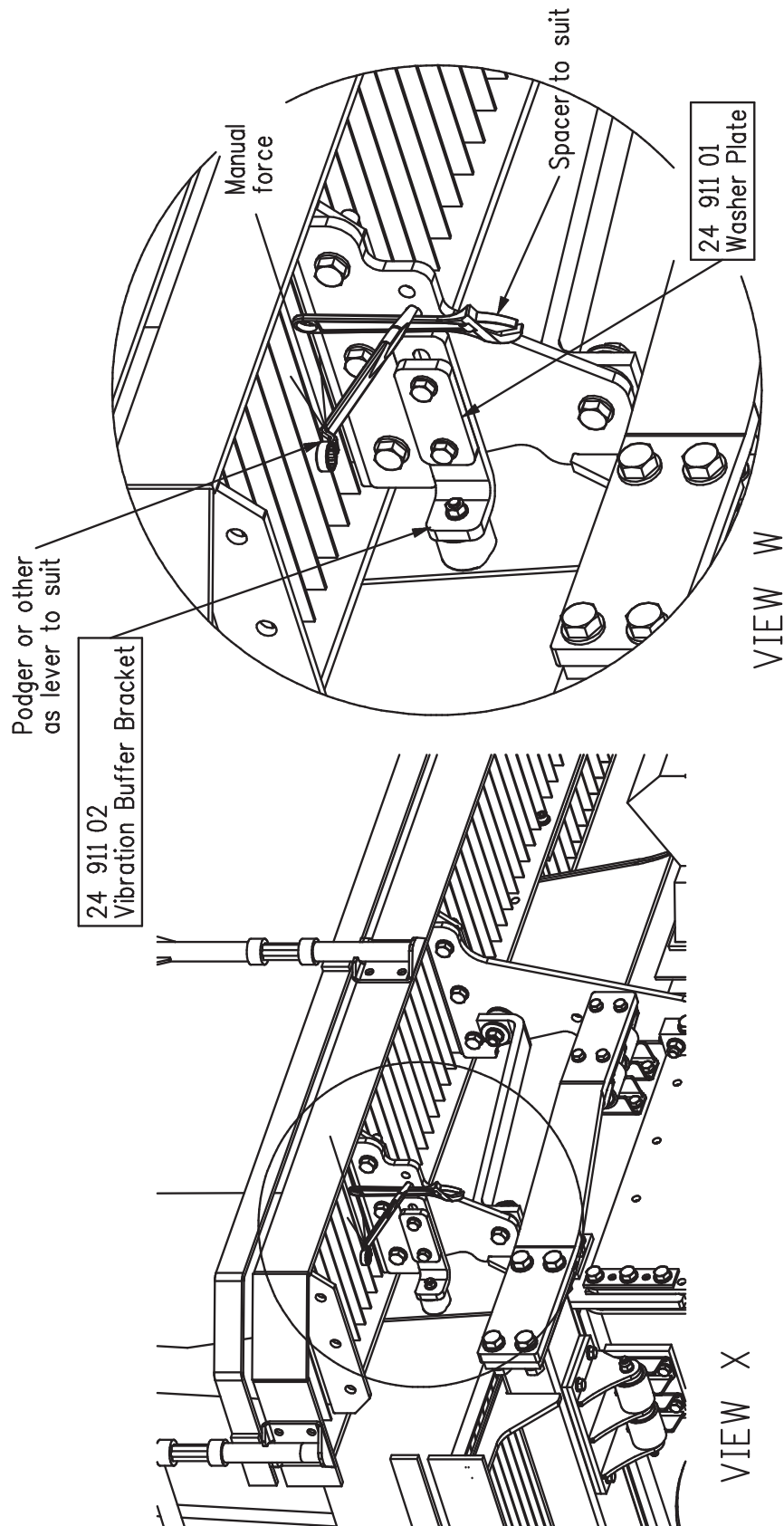


FOLDING LADDER

Caterpillar D10T Dozer- Aluminium Ladder



Section 1 Installation Instruction Drawings - 24 935 Sht 2



FOLDING LADDER

Caterpillar D10T Dozer- Aluminium Ladder



Section 3 Recommended Maintenance Procedure

Daily

Visually check ladder and structure for damage, loose components, handrails, etc.

Check for hydraulic oil leaks from hydraulic Actuator and hoses.

Notify the appropriate supervisor for any observed damage or malfunction.

500 & 5000 Hours

Grease the nipples on the Actuator.

Check main mounting bolts for torque.

Repeat daily check as above.

FOLDING LADDER

Caterpillar D10T Dozer- Aluminium Ladder



Section 4 Operating Procedure

To Lower Ladder (from the machine)

Position machine in a level, safe area, away from the work face, whenever possible.
Apply Park Brake and lower engine speed to idle.

Check that the area below the Ladder Access System is clear of people and obstacles, and lower the ladder by operating the two position Hydraulic Lever, (positioned on the R.O.P.S frame of machine) to the down position by pressing the Lever down.

Hold the Lever in the down position until ladder is fully lowered.

If the Dozer is parked on uneven ground, the bottom of the Ladder may touch the ground before the Ladder is in the fully lowered position.

Should this occur, descend the Ladder with caution.

To Raise Ladder

Ascend the Ladder onto the landing of the Dozer.

Ensure the area around the Ladder is clear of people and standing to the side, clear of the area the handrails and Ladder raises into, operate the Hydraulic Lever to the raise position (up).

Hold the Lever in the up position until the Ladder is in the fully raised position.

The Ladder is now raised and stored.

OPERATING NOTES

NOTE: MAGNETIC 'GO' SWITCH ADJUSTMENT:

The switch target trigger area is located on the opposite side and end from the cable entry point on the switch. Once it is mounted to the switch bracket, adjust the switch in or out from the stair steel trigger point, to be within 3mm - 10mm from touching each other when the stair is in the desired rest position.

[DO NOT EXCEED 10mm DISTANCE BETWEEN THE SWITCH AND STRIKER PLATE].

Test by raising and lowering the Power Step a couple of times and adjust again if necessary.

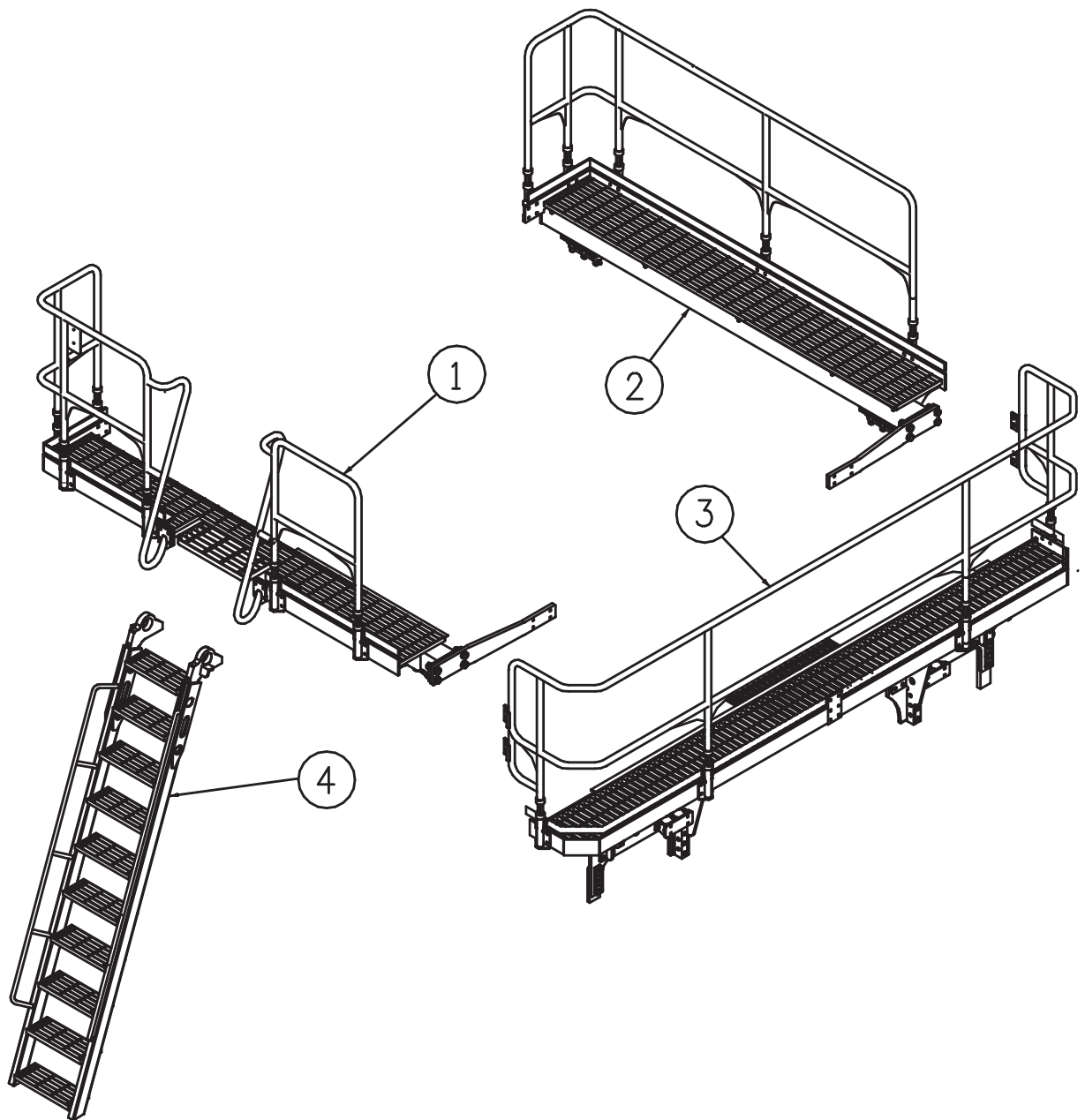
FOLDING LADDER

Caterpillar D10T

Dozer



Section 5 Assembly Complete

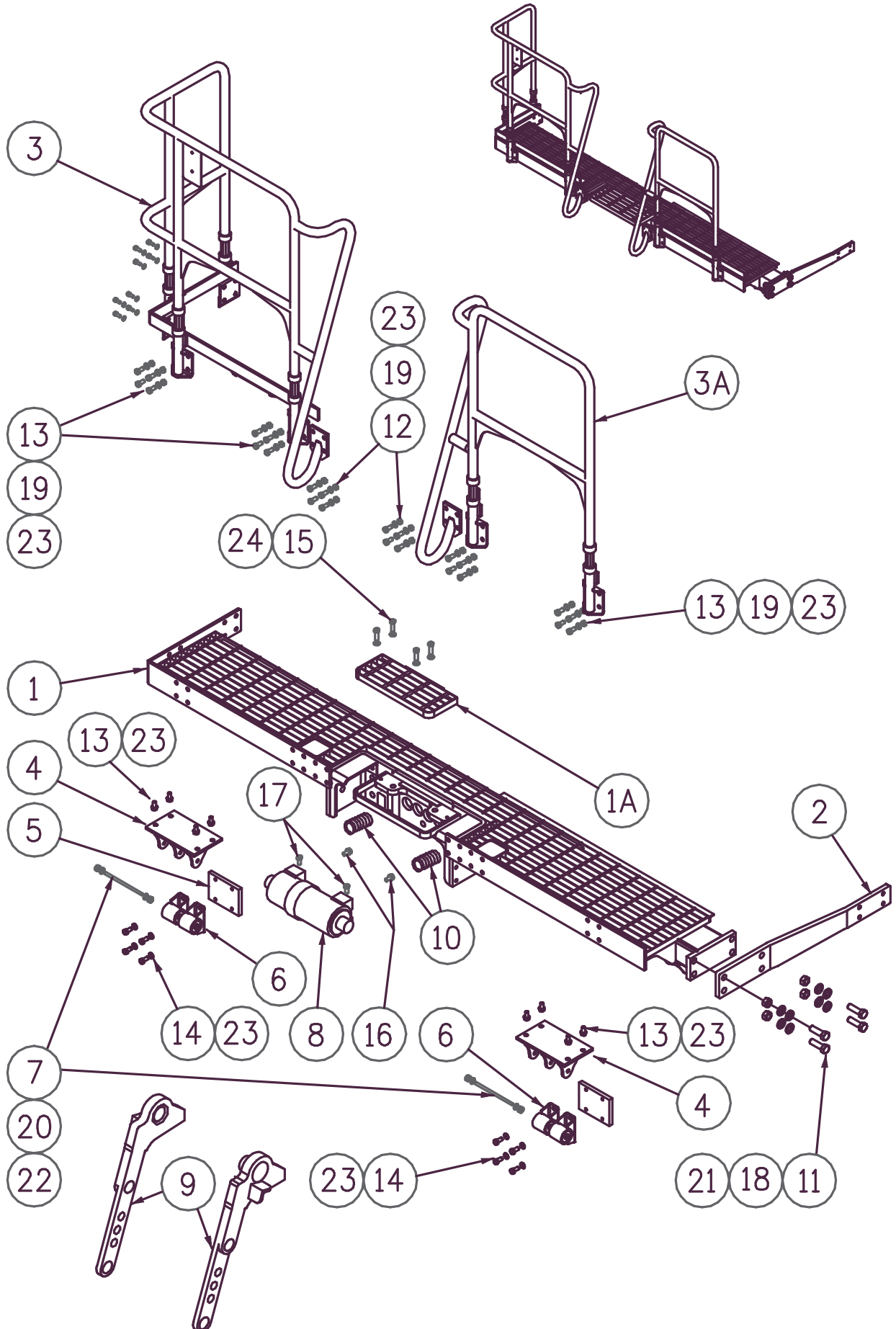


FOLDING LADDER

Caterpillar D10T Dozer- Aluminium Ladder



Section 5-1 Landing Assembly LHS PS-24917-A



FOLDING LADDER

Caterpillar D10T Dozer- Aluminium Ladder



Section 5-1 Landing Assembly LHS PS-24917-A

See Drawing Page 18

(Does not include Items 8,16 & 17)

Item	Part No.	Part Name	Qty		
1	PS-24917	LANDING ASSEMBLY LHS	1		
1A	PS-24943-02	LANDING FILLER-BOLT IN	1		
2	PS-24906 - LHS	TORQUE ARM - LHS	1		
3	PS-24921-A	HANDRAIL - LHS - FRONT	1		
3A	PS-24921-B	HANDRAIL - LHS - REAR	1		
4	PS-24908	SIDE FINGER BRACKETS	2		
5	PS-24928-01	SIDE BOLTING PAD	2		
6	PS-21930-A	ISOLATOR MOUNTING ASSY.	4		
7	PS-24930	ISOLATOR BUSH PIN	2		
8	PS-T30-27-E-FT-220-DA-O-H	ACTUATOR	1		
9	PS-24945	SPIGOT ASSEMBLIES (L & R)	1		
10	PS-DOO93-1	SPRING	2		
11	PS-M20X70ZP	BOLT-M20 x 70	4		
12	CPS-M12X40ZP	BOLT-M12 x 40	8		
13	CPS-M12X35ZP	BOLT-M12 x 35	32		
14	CPS-M12X20ZP	BOLT-M12 x 20	8		
15	CPS-M10X20SC	SOCKET CAP BOLT-M10 x 20SC	4		
16	PS-5/8"X 2 3/4"ZP	BOLT - 5/8"X 2 3/4"UNC	2		
17	PS-5/8"X 1 1/2"SC	SOCKET CAP BOLT-5/8"x 1 1/2"UNC	2		
18	CPS-M20NZP	NUT-M20	4		
19	CPS-M12NZP	NUT-M12	32		
20	CPS-1/2"NN	NUT-NYLOC-1/2" UNC	4		
21	CPS-M20WH	WASHER-HARDENED-M20	8		
22	CPS-1/2"WH	WASHER-HARDENED-1/2"	4		
23	CPS-M12WH	WASHER-HARDENED-M12	80		
24	CPS-M10WH	WASHER-HARDENED-M10	4		

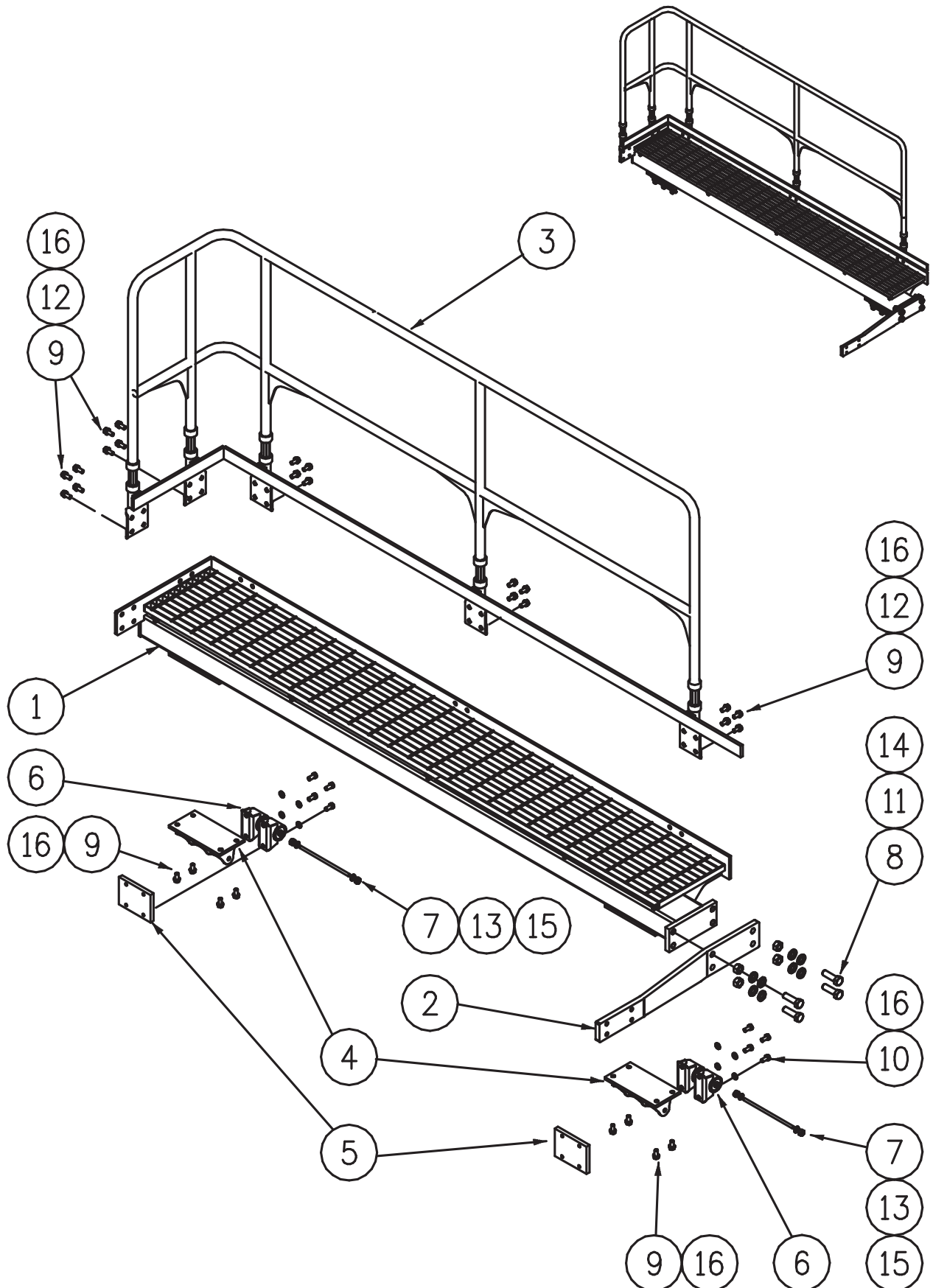
FOLDING LADDER

Caterpillar D10T Dozer- Aluminium Ladder



Section 5-2 Landing Assembly RHS PS-24937-A

See Parts List Page 21



FOLDING LADDER

Caterpillar D10T Dozer- Aluminium Ladder



Section 5-2 Landing Assembly RHS PS-24937-A

See Drawing Page 20

Item	Part No.	Part Name	Qty		
1	PS-24937	LANDING ASSEMBLY RHS	1		
2	PS-24906-RHS	TORQUE ARM - RHS	1		
3	PS-24922	HANDRAIL - RHS	1		
4	PS-24908	SIDE FINGER BRACKETS	2		
5	PS-24928-01	SIDE BOLTING PAD	2		
6	PS-21930A	ISOLATOR MOUNTING ASSY.	4		
7	PS-24930	ISOLATOR BUSH PIN	2		
8	CPS-M20X70ZP	BOLT-M20 x 70	4		
9	CPS-M12X35ZP	BOLT-M12 x 35	28		
10	CPS-M12X20ZP	BOLT-M12 x 20	8		
11	CPS-M20NZP	NUT-M20	4		
12	CPS-M12NZP	NUT-M12	20		
13	CPS-1/2"NN	NUT-NYLOC-1/2" UNC	4		
14	CPS-M20WH	WASHER-HARDENED-M20	8		
15	CPS-1/2"WH	WASHER-HARDENED-1/2"	8		
16	CPS-M12WH	WASHER-HARDENED-M12	36		

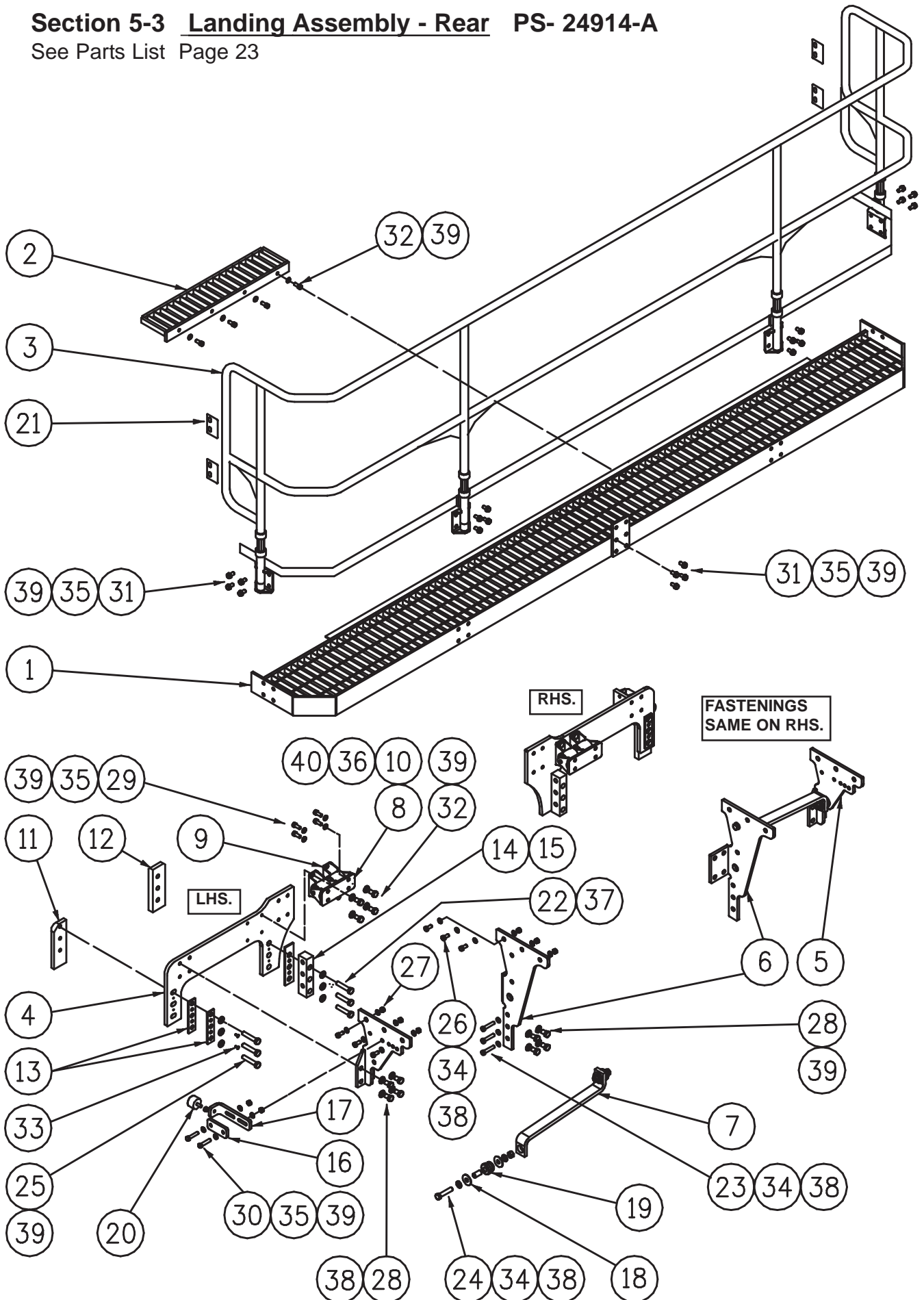
FOLDING LADDER

Caterpillar D10T Dozer- Aluminium Ladder



Section 5-3 Landing Assembly - Rear PS- 24914-A

See Parts List Page 23



FOLDING LADDER

Caterpillar D10T Dozer- Aluminium Ladder



Section 5-3 Landing Assembly - Rear PS- 24914-A

See Drawing Page 22

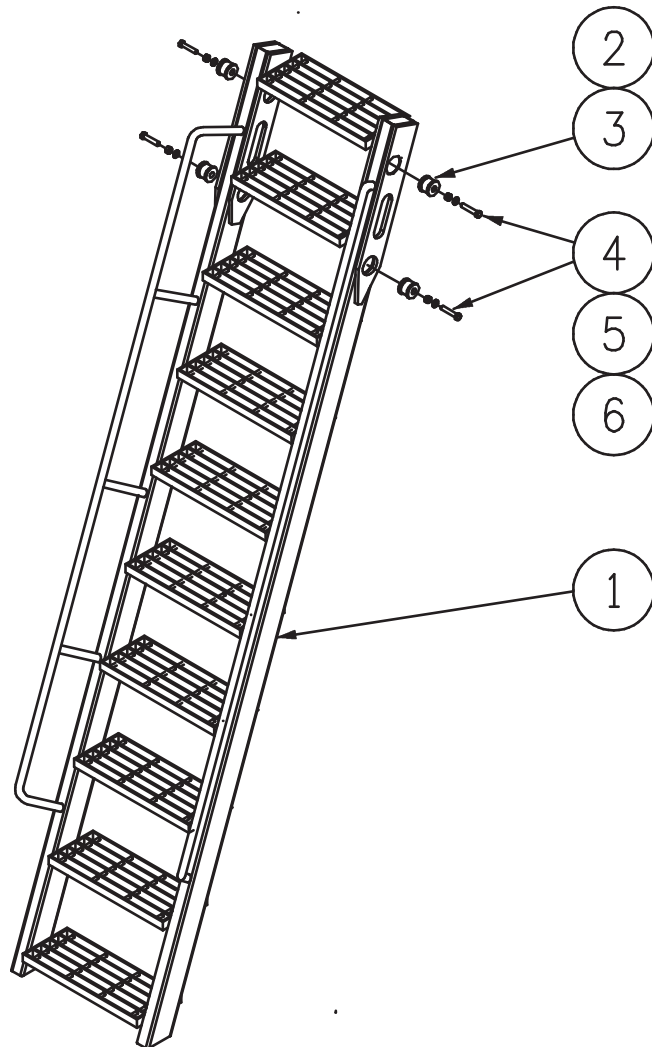
Item	Part No.	Part Name	Qty		
1	PS-24914	LANDING - REAR	1		
2	PS-24913	TANK PANEL	1		
3	PS-22283	HANDRAILS- REAR	1		
4	PS-24902	MOUNTING PLATE	2		
5	PS-24904	OUTER WALKWAY SUPPORT	2		
6	PS-24905	INNER WALKWAY SUPPORT	2		
7	PS-24910	LATERAL BRACE	2		
8	PS-24909	TORQUE ARM ISOLATOR BRACKET	2		
9	PS-21930A	ISOLATOR ASSEMBLY	4		
10	PS-24930	ISOLATOR BUSH PIN	2		
11	PS-24901-01-L/R	REAR MOUNTING BLOCKS-OUTER- L/H or R/H	2	1 ea	
12	PS-24901-02-L/R	REAR MOUNTING BLOCKS-INNER- L/H or R/H	2	1 ea	
13	PS-24903-01	WASHER PLATE-OUTER	4		
14	PS-24903-02	WASHER PLATE-INNER	2		
15	PS-24903-03	BOLTING BLOCK-INNER	2		
16	PS-24911-01	WASHER PLATE	2		
17	PS-24911-02	BUFFER BRACKET	2		
18	PS-24912	BRACE ISOLATOR WASHER	4		
19	PS-34103	BUSH (SPECIAL)	4		
20	PS-34104	RUBBER BUFFER	2		
21	PS-HR2-A06	HANDRAIL CLAMP ASSY.	4		
22	PS-M20X100ZP	BOLT-M20 x 100	6		
23	CPS-M16X75ZP	BOLT-M16 x 75	6		
24	CPS-M16X80ZP	BOLT-M16 x 80	4		
25	CPS-M16X65ZP	BOLT-M16 x 65	6		
26	CPS-M16X55ZP	BOLT-M16 x 55	6		
27	CPS-M16X45ZP	BOLT-M16 x 45	4		
28	CPS-M16X30ZP	BOLT-M16 x 30	16		
29	CPS-M12X50ZP	BOLT-M12 x 50	8		
30	CPS-M12X45ZP	BOLT-M12 x 45	4		
31	CPS-M12X35ZP	BOLT-M12 x 35	22		
32	CPS-M12X20ZP	BOLT-M12 x 20	8		
33	CPS-M6X10CS	BOLT-M6 x 10 (C/Sunk Hd)	8		
34	CPS-M16NZP	NUT-M16	28		
35	CPS-M12NZP	NUT-M12	26		
36	CPS-1/2"NN	NUT-NYLOC-1/2" UNC	4		
37	CPS-M20WH	WASHER-HARDENED-M20	6		
38	CPS-M16WH	WASHER-HARDENED-M16	72		
39	CPS-M12WH	WASHER-HARDENED-M12	64		
40	CPS-1/2"WH	WASHER-HARDENED-1/2"	4		

FOLDING LADDER

Caterpillar D10T Dozer- Aluminium Ladder



Section 5-4 Ladder Assembly PS- 24941-A (Incl.1-6)



Item	Part No.	Part Name	Qty		
1	PS-24941	LADDER & HANDRAIL FABRICATION	1		
2	PS-24946	BUSH KEEPER PLATE	8		
3	PS-2229K	POLY BUSH KIT	4		
4	CPS-M12X100ZP	BOLT M12 x 100	4		
5	CPS-M12NN	NYLOC NUT-M12	4		
6	CPS-M12WH	WASHER-HARDENED-M12	8		

FOLDING LADDER

Caterpillar D10T Dozer- Aluminium Ladder



Section 5-5 Hydraulics - Hoses and Fittings

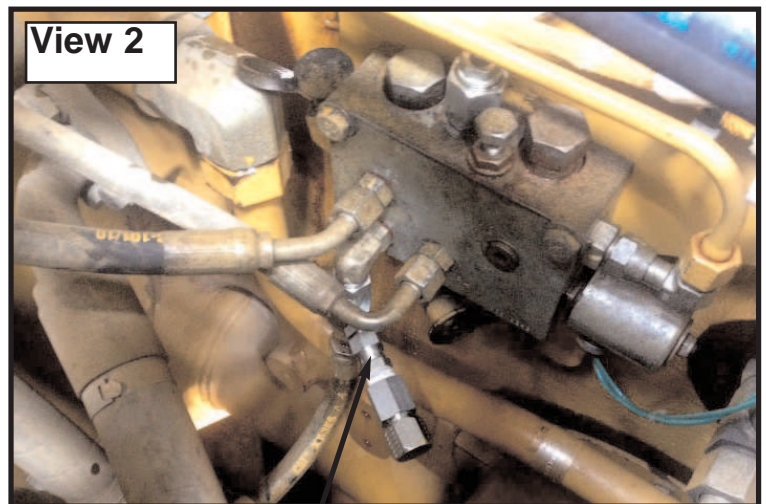
See Parts List Pg 26

PROCEDURE

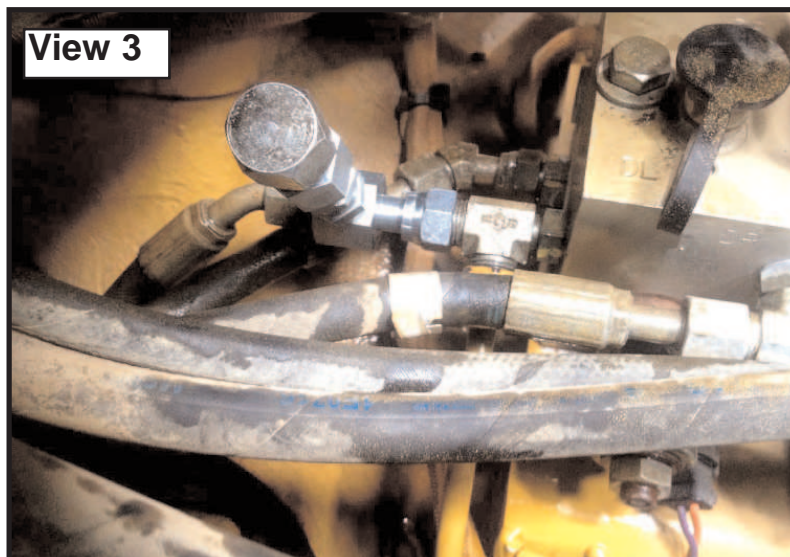
Remove cab floor -
View 1 shows valving
on front of transmission.



Return to tank hose from the
PowerStep Valve Assembly to be
"T" into the hose indicated, on top
of the transmission valve block, as
per **View 3**.



Pressure hose to be "T" into the
Control Manifold for the pressure
reducing valve Pilot line.
See **View 2**. (Front of Transmission)



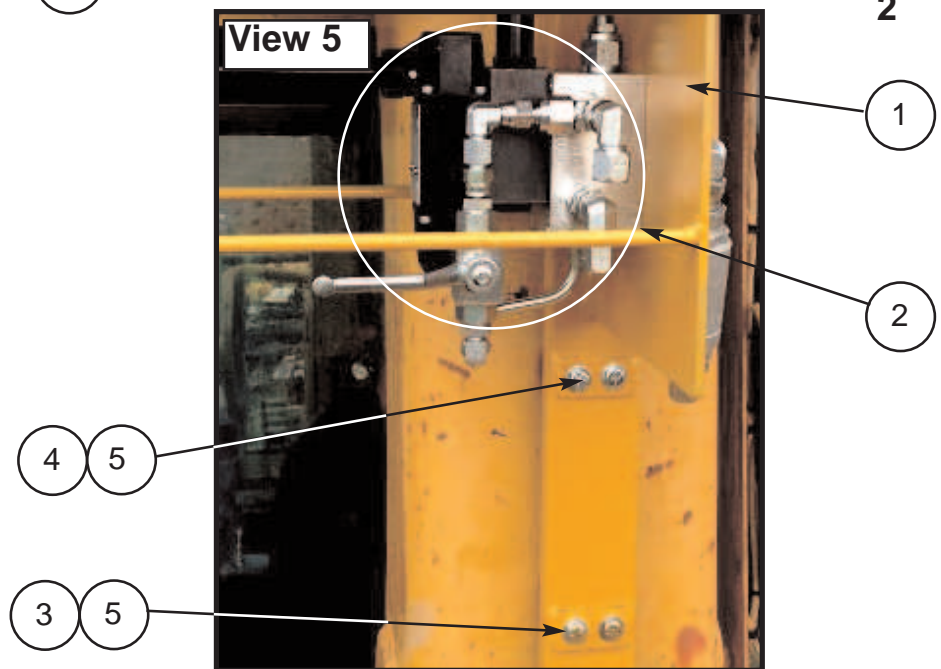
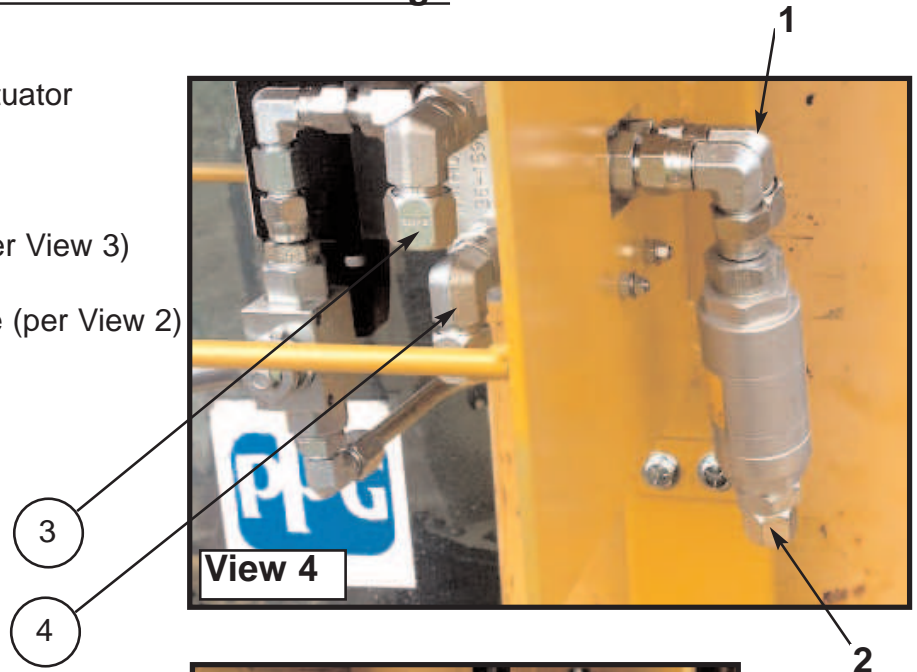
FOLDING LADDER

Caterpillar D10T Dozer- Aluminium Ladder



Section 5-5 Hydraulics - Hoses and Fittings

1. Raise - Pressure to Actuator
2. Lower - Back to Tank
3. To tank on Machine (per View 3)
4. Pressure from Machine (per View 2)



Control valve & Bracket mounted to left hand side ROPS Frame using existed blocks on ROPS

Item	Part No.	Part Name			
1	PS-24940	CONTROL VALVE MOUNT BRACKET	1		
2	PS-A/L-D10T-H/VKIT	CONTROL VALVE ASSY.	1		
3	CPS-3/8"X2"ZP	BOLT-3/8"x 2"	2		
4	CPS-3/8"X1 3/4"ZP	BOLT-3/8"x 1 3/4"	2		
5	PS-3/8"WH	WASHER HARDENED-3/8"	4		
6	PS-41107	EMERGENCY VALVE DECAL (Not shown)	1		
7	PS-41108	UP/DOWN DECAL (Not shown)	1		

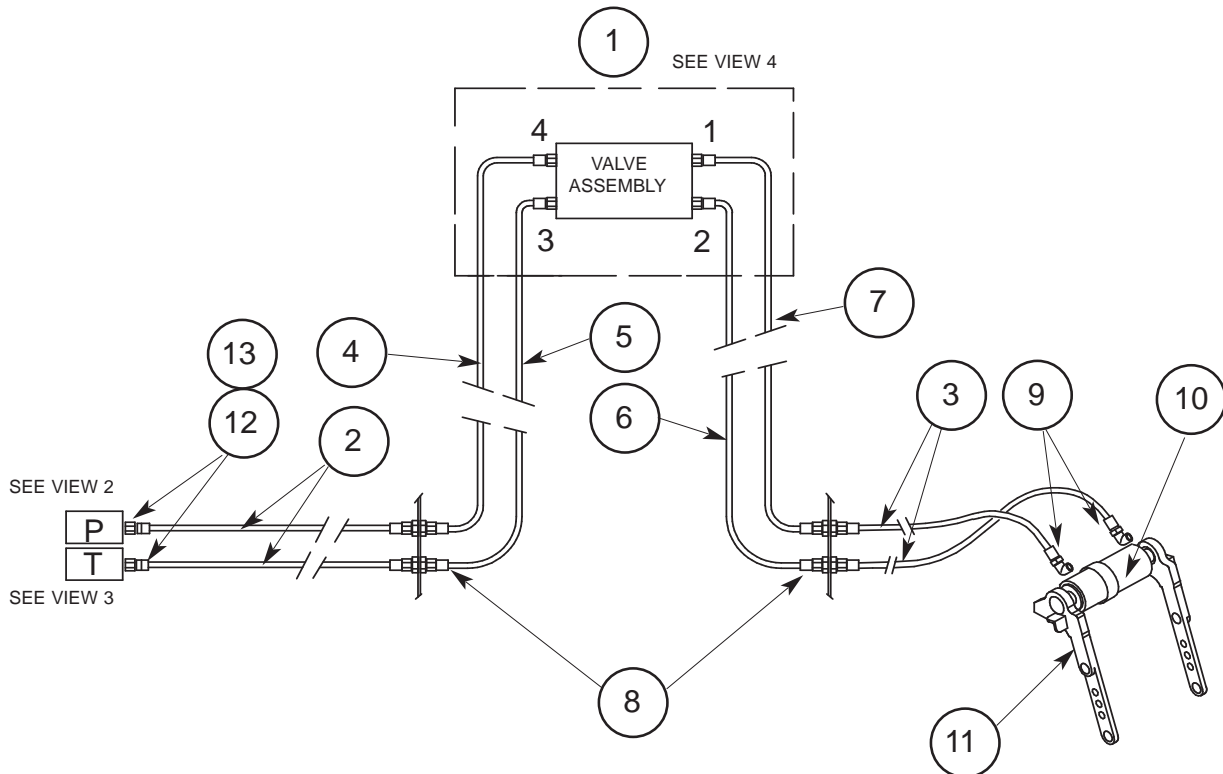
FOLDING LADDER

Caterpillar D10T Dozer- Aluminium Ladder



Section 5-5 Hydraulics - Hoses and Fittings - Kit

See Photos for Views Pg 25 & 26
(Not including Items 9, 10 & 11)



Item	Part No.	Part Name			
1	PS-A/L-D10T-H/VKIT	CONTROL VALVE ASSY.	1		
2	PS-60051-AL-4M-012SW	4M x 3/8" HOSES 3/4" Swivel both ends	1		
3	PS-60051-AL-4M-009SW-012SW	4M x 3/8" HOSES 9/16" Swivel one end 3/4" Swivel other end	2		
4	PS-60051-AL-850MM-012SW	850MM 3/8" HOSES 3/4" Swivel both ends	1		
5	PS-60051-AL-900MM-012SW	900MM 3/8" HOSES 3/4" Swivel both ends	1		
6	PS-60051-AL-650MM-012SW	650MM 3/8" HOSES 3/4" Swivel both ends	1		
7	PS-60051-AL-800MM-012SW	800MM 3/8" HOSES 3/4" Swivel both ends	1		
8	PS-C2-1212	3/4" FIREWALL FITTING	4		
9	PS-61152	9/16" JIC 90 DEG FITTING	2		
10	PS-T30-27-E-FT-220-DA-O-H	ACTUATOR	1		
11	PS-24945	SPIGOT ASSEMBLY (1 x LH & 1 x RH)	2		
12	PS-F27G-111107	3/4" x 3/8" STRAIGHT UNION ORFS WITH UNO GAUGE PORT	2		
13	PS-C3-0712	7/16" x 3/4" 'O' RING x JIC NIPPLE	2		

FOLDING LADDER

Caterpillar D10T Dozer- Aluminium Ladder

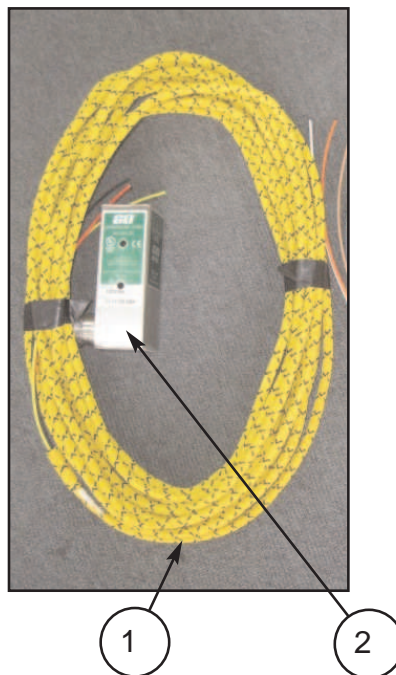


Section 5-6 Electrical Controls

See Parts List Pg. 29

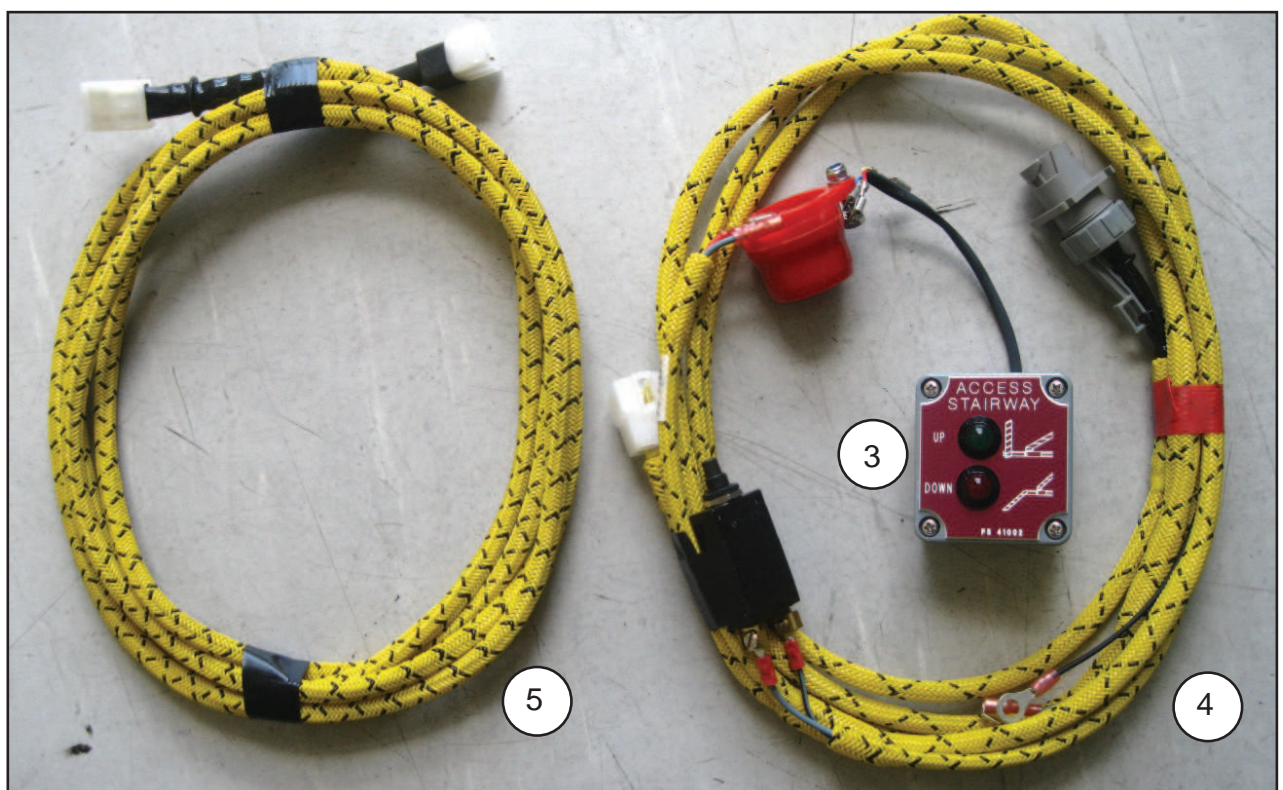
Proximity Switch Assembly

Mounted on Fixed Landing



Cab Harness & Equipment

Refer Wiring Harness Drawings



FOLDING LADDER

Caterpillar D10T Dozer- Aluminium Ladder



Section 5-6 Electrical Controls

See Photos Page 28

Item	Part No.	Part Name	Qty		
1	PS-77004	CABIN TO SWITCH HARNESS	1		
2	PS-75430	PROXIMITY SWITCH	1		
3	PS-77002	CABIN BOX LED LIGHT INDICATOR	1		
4	PS-77003	WIRING HARNESS IN CABIN	1		
5	PS-77011	CABIN EXTENSION HARNESS - 3M	1		

FOLDING LADDER

Caterpillar D10T Dozer- Aluminium Ladder



Section 2 Electrical System - Wiring Diagram

