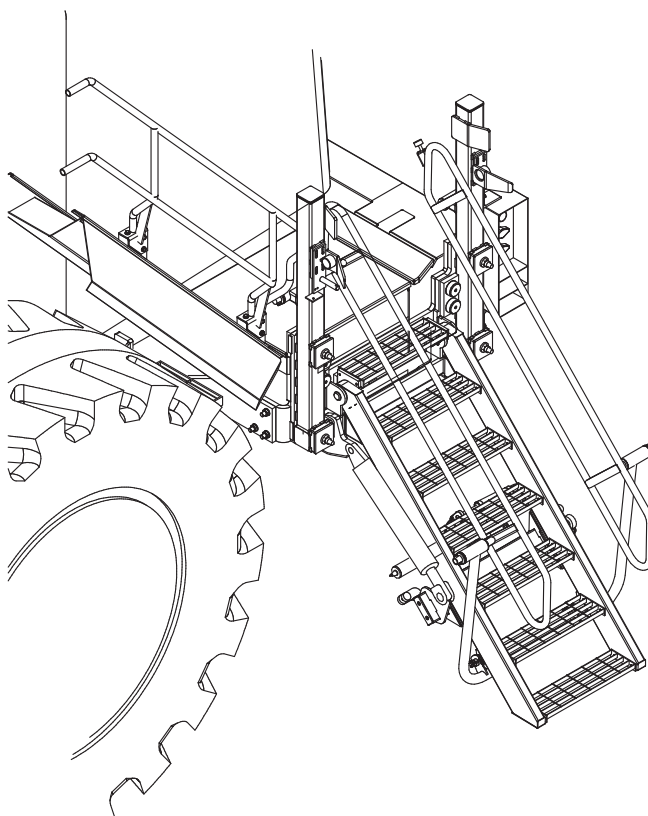


# FOLDING STAIRWAY

## Manual for Komatsu WD 900



Model No.: PSA-WD900-FS  
Serial No.: WD900-FS-001C & WD900-FS-002C  
Date Manufactured: FEB 2011

# FOLDING STAIRWAY

## Komatsu WD 900 Loader



## CONTENTS

Page 3	Section 1 <u>Installation and Mounting Instructions</u> Installation Drawings
7	Section 3 <u>Recommended Maintenance procedure</u>
8	Section 4 <u>Operating Procedure</u>
	Section 5 <u>Drawings and Repair Parts lists</u>
9	5 Assembly Complete Parts List
11	5-1 Base Frame and Mounting Assembly Parts List
13	5-2 Stair Assembly Parts List
15	5-3 Latch Assembly Parts List
17	5-4 Hydraulic Cylinders Parts List Hydraulic Layout
20	5-5 Power Pack Parts List
23	5-6 Electrical Controls Wiring Diagrams

# FOLDING STAIRWAY

## Komatsu WD 900 Loader

**POWER STEP**  
(AUSTRALIA) PTY. LTD.

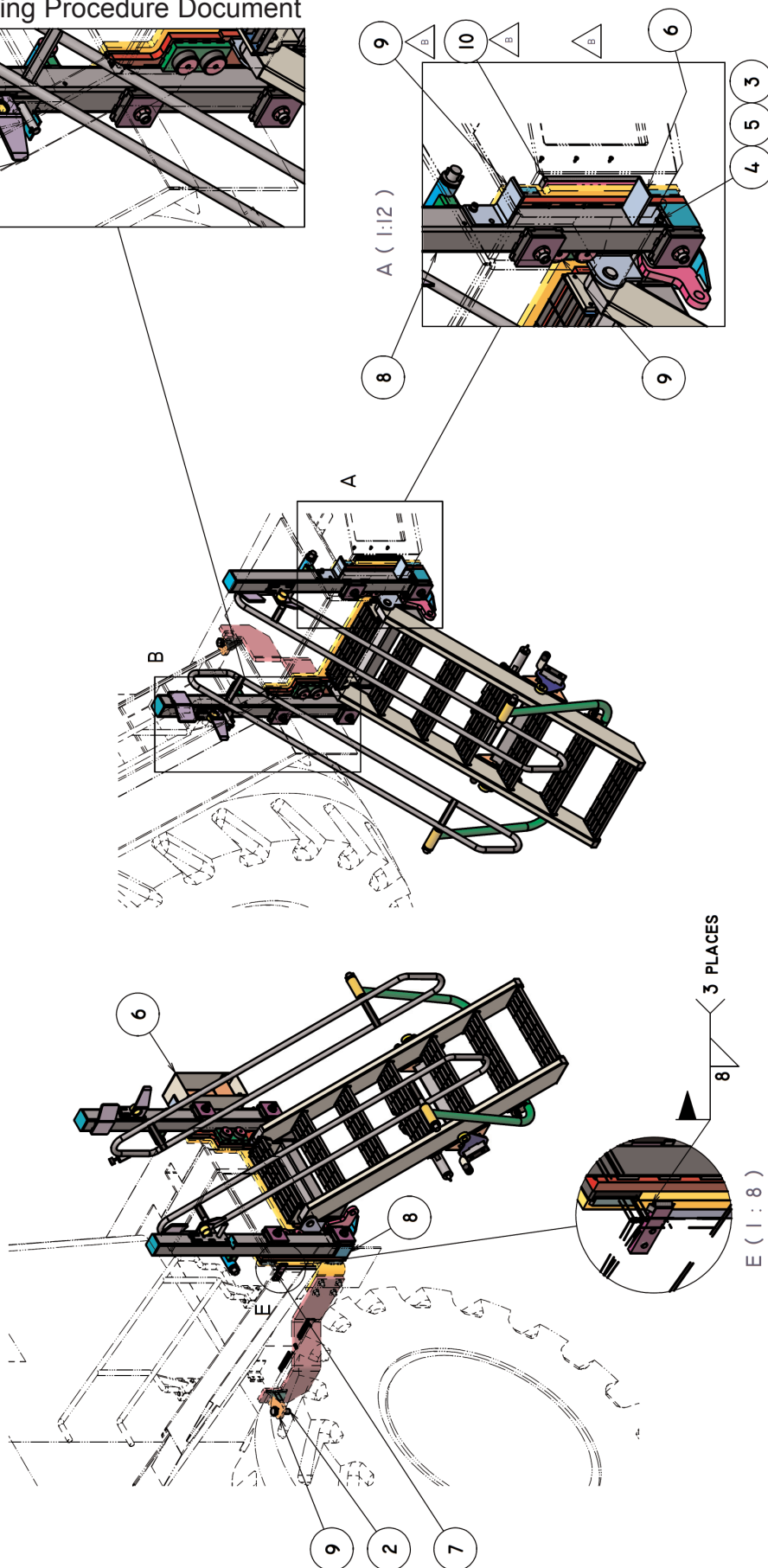
### Section 1 Installation Drawings PSA- WD900-Install-01-C Sheet. 1 of 3

See also PowerStep Mounting Procedure Document

**NOTE**  
Follow all on-site/Mine lifting and safety procedures when installing PSFS to Loader

REV	REV DESCRIPTION	CHECKED DAT	WFG APPROVED BY
A	FIRST ISSUE		P.A.
B	REDESIGN TO FIT WD900(300H SHORTER)	14/06/2011	P.A.
C	CHANGED MOUNTING PLATE + ADDED BLOCK AND TIE PLATE	5/09/2011	P.A.

ITEM QTY	PART NO	REV	DESCRIPTION	MASS
1	AS 1110 - M12 X 25		ISO METRIC HEXAGON PRECISION BOLTS AND SCREWS	0.038 KG
2	AS 1110 - M30 X 100		ISO METRIC HEXAGON PRECISION BOLTS AND SCREWS	0.821 KG
3	AS 1237 - 12 MM		FLAT METAL WASHERS FOR GENERAL ENGINEERING PURPOSES (METRIC SERIES)	0.006 KG
4	AS 1420 - 1973 - M12 X 25		ISO METRIC HEXAGON SOCKET HEAD CAP SCREWS	0.041 KG
5	AS 1968 - 1976 - 12		ISO METRIC HEXAGON SOCKET HEAD CAP SCREWS	0.005 KG
6	PSA-002-A02	B	WD900 - SWITCH BOX ASSY	14.156 KG
7	PSA-002-C09	B	TIE PLATE (BEDOX-MPLATE)	0.447 KG
8	PSA-A23-864	-	PSA STEP UNIT	34.3 84.9 KG
9	PSA-WD900-A01	A	MAIN MOUNTING PAD ASSEMBLY	153 34.9 KG
10	PSA-WD900-C04	B	BUMPER WELD-ON PLATE	6.213 KG
11	PSA-WD900-C08	-	BLOCK WITH HOLE	0.432 KG



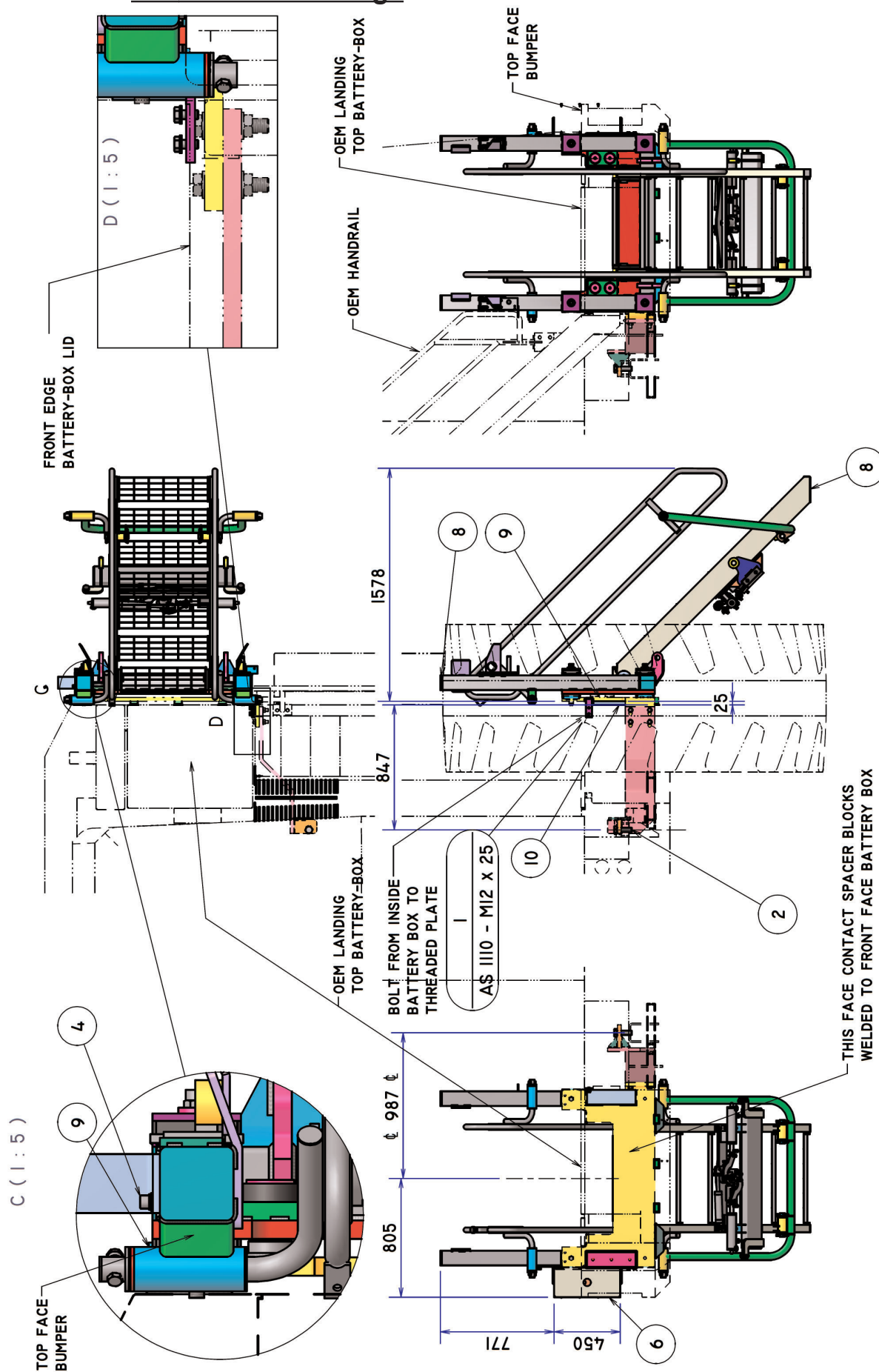
# FOLDING STAIRWAY

## Komatsu WD 900 Loader



### Section 1 Installation Drawings

PSA- WD900-Install-01-C Sheet. 2 of 3



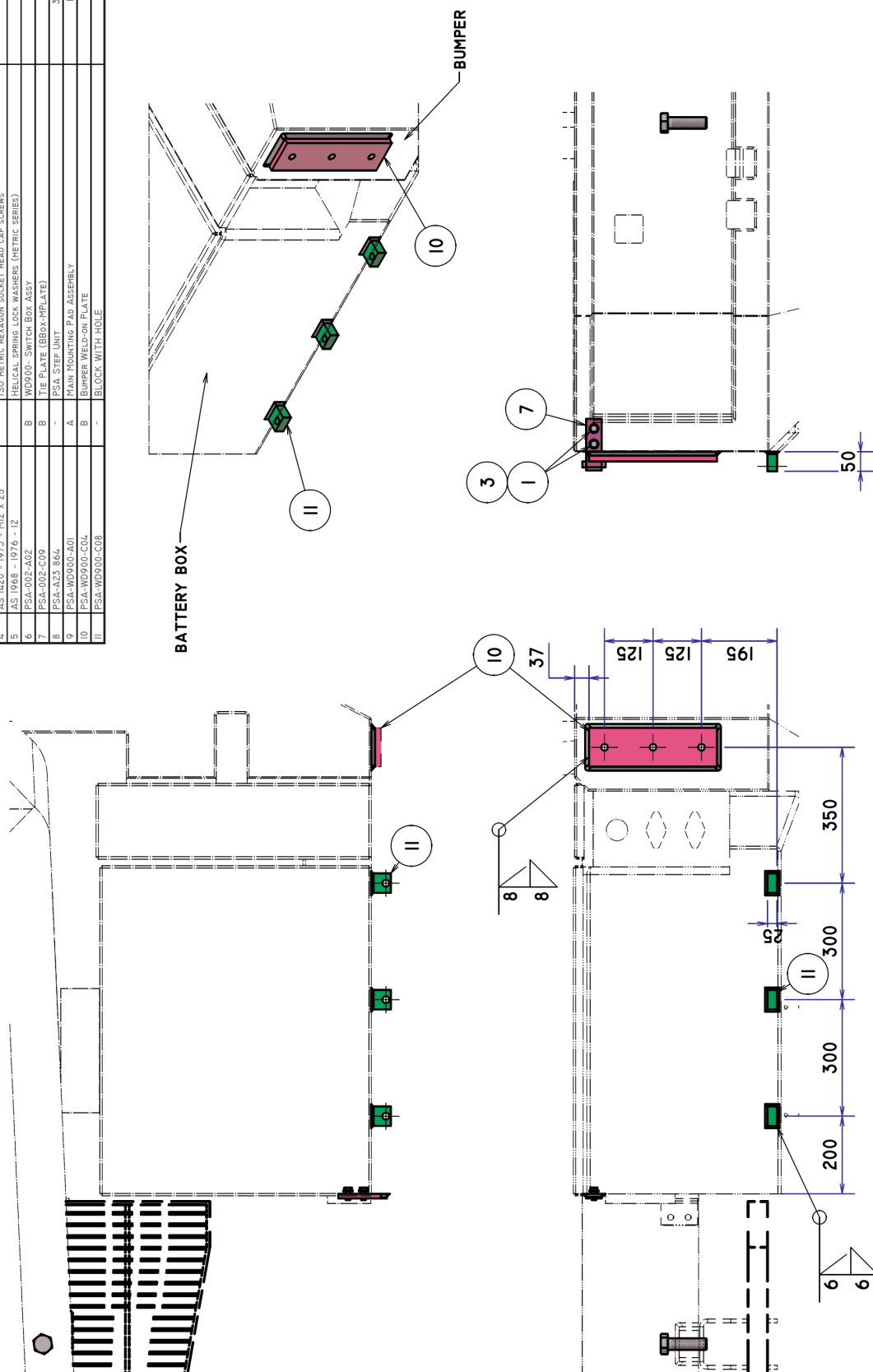
# FOLDING STAIRWAY

## Komatsu WD 900 Loader



### Section 1 Installation Drawings PSA- WD900-Install-01-C Sheet. 3 of 3

ITEM	PART No	REV	DESCRIPTION	MASS
1	AS 110 - M12 x 25		ISO METRIC HEXAGON PRECISION BOLTS AND SCREWS	0.038 KG
2	AS 110 - M30 x 100		ISO METRIC HEXAGON PRECISION BOLTS AND SCREWS	0.821 KG
3	AS 1237 - 12 MM		FLAT METAL WASHERS FOR GENERAL ENGINEERING PURPOSES (METRIC SERIES)	0.005 KG
4	AS 1420 - 1973 - M12 x 25		ISO METRIC HEXAGON SOCKET HEAD CAP SCREWS	0.041 KG
5	AS 1968 - 1976 - 12		HEXAGON SPRING LOCK WASHERS (METRIC SERIES)	0.005 KG
6	PSA-002-A02	B	WD900- SWITCH BOX ASSY	14.156 KG
7	PSA-002-C00	B	TIE PLATE (BBOX-PLATE)	0.447 KG
8	PSA-A23 B64	A	MAIN MOUNTING PAD ASSEMBLY	343.849 KG
9	PSA-WD900-A01			153.349 KG
10	PSA-WD900-C04	B	BUMPER WELD-ON PLATE	6.217 KG
11	PSA-WD900-C08	-	BLOCK WITH HOLE	0.432 KG



# FOLDING STAIRWAY

## Komatsu WD 900 Loader



### Section 1 Installation and Mounting Instructions (cont.)

#### **WARNING**

Raising the POWER STEP platform by external means can create a vacuum in the hydraulic cylinder and create the opportunity to allow air into the hydraulic system, defeating the inherent safety features of the POWER STEP.

This must be avoided, to maintain safe operation of the POWER STEP.

In instances where the use of external means to raise the platform must be used, please follow the following instructions:

Loosen hard plumbed hydraulic lines on cylinder side of lock valve on cylinder.

Raise platform by available means.

Note: Make necessary arrangements to collect displaced oil, and be aware that air enters the piston side of the cylinder as platform is raised.

Lock in raised position.

Re-tighten hydraulic fittings.

SECURE THE PLATFORM IN THE RAISED POSITION, MECHANICALLY, CHAIN & TAGOUT THE POWER STEP

To recommission the POWER STEP:

Loosen hydraulic fittings on cylinder side of lock valve.

Note: Collect displaced oil.

Lower platform to lowest position, using alternate safety approved means, fully retracting cylinder. Ensure all personnel are clear of step radius.

Operate electrical control switch to purge air from the hydraulic line systems, lock valve and cylinder.

Tighten the hydraulic fittings either side of lock valves to restriction fittings.

Cycle step unloaded several times to purge all air from hydraulic system.

The Power Step will not operate correctly if there is any air in the hydraulic circuit (due to the incorrect operation of the lock valve).



# **FOLDING STAIRWAY**

## **Komatsu WD 900 Loader**



### **Section 3 Recommended Maintenance Procedure**

#### **Daily**

**Visually check stairway and structure for damage, loose components, handrails, etc.**

**Check for hydraulic oil leaks from hydraulic cylinders, plumbing and hoses.**

**Notify the appropriate supervisor for any observed damage or malfunction.**

#### **500 Hours**

**Grease 2 grease nipples on hinge pins**

**Check main mounting bolts for torque.**

**Check hydraulic oil level in power pack and top up as necessary. (Stairway in raised position).**

**Top up using same hydraulic oil as used in hydraulics of machine.**

**Thoroughly check all electrical wiring for damage, replace as necessary.**

**Repeat daily check as above**

#### **5000 Hours**

**Change hydraulic oil in tank of hydraulic power pack (5.0 litres)**

**It is recommended that the same hydraulic oil be used in the power pack as the hydraulics of the machine.**

**Check and inspect all main bolts on stairway system.**

**Retorque if required.**

**Repeat daily check as above**

# FOLDING STAIRWAY

## Komatsu WD 900 Loader



### Section 4 Operating Procedure

#### **To Lower Stairway (from the machine)**

Position machine in a level, safe area, away from the work face, whenever possible.  
Apply park brake and lower engine speed to idle.

Check that the area below the Ladder Access System is clear of people and obstacles, and lower ladder by operating the two position electrical switch adjacent to the ladder, to the down position by pressing the switch down.

Hold the switch in the down position until ladder is fully lowered.

If the truck is parked on uneven ground, the bottom of the stairway may touch the ground before the ladder is in the fully lowered position.

Should this occur, descend the ladder with caution.

#### **To Raise Stairway**

Ascend the ladder onto the landing of the Loader.

Ensure the area around the ladder is clear of people and standing to the side, clear of the area the handrails and ladder raises into, operate the electrical switch to the raise position (up).

Hold the switch in the up position until the ladder is in the fully raised position.

The ladder is now raised and stored.

### **OPERATING NOTES**

#### **NOTE: FLOW CONTROL VALVE ADJUSTMENT:**

The valve should be positioned to restrict the flow and speed of the Power Step when lowering. Adjust the knob on top of the valve by turning left or right (clockwise) when the step is being lowered, until it is lowering at a safe and reasonable speed.

When it is adjusted, lock the adjusting knob by tightening the grub screw located on the side of the knob.

#### **NOTE: MAGNETIC 'GO' SWITCH ADJUSTMENT:**

The switch target trigger area is located on the opposite side and end from the cable entry point on the switch. Once it is mounted to the switch bracket, adjust the switch in or out from the stair steel trigger point, to be within 3mm - 10mm from touching each other when the stair is in the desired rest position.

[DO NOT EXCEED 10MM DISTANCE BETWEEN THE SWITCH AND STRIKER PLATE].

Test by raising and lowering the Power Step a couple of times and adjust again if necessary.



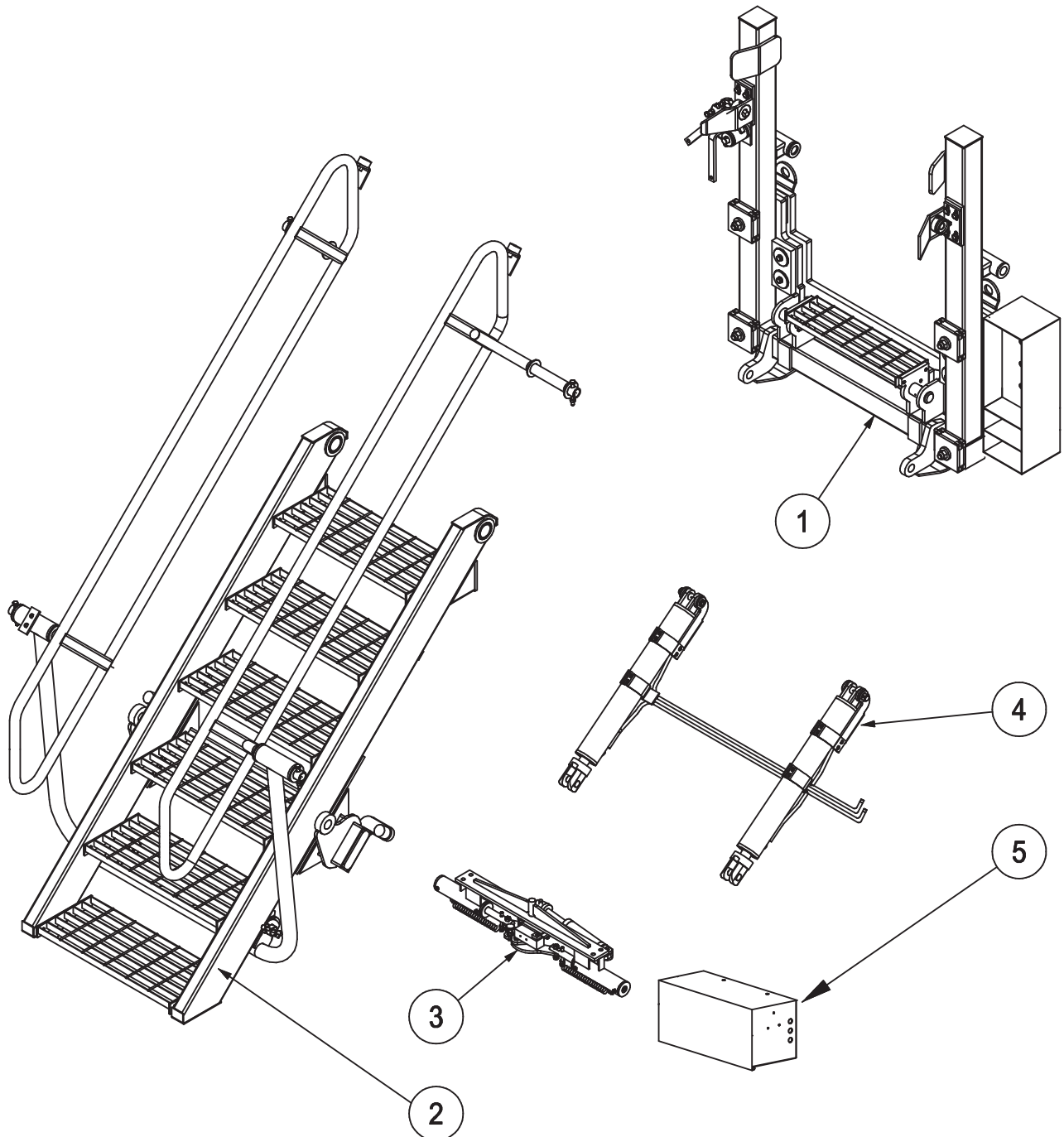
# FOLDING STAIRWAY

## Komatsu WD 900 Loader



### Section 5 Assembly Complete

PSA-WD 900-FS



# FOLDING STAIRWAY

## Komatsu WD 900 Loader



### Section 5 Assembly Complete

PSA-WD 900-FS

See Drawing Page 9

ITEM	PART NO.	PART NAME	QTY		
	PSA-WD 900-FS	ASSEMBLY COMPLETE	1		
1	PS-23838-900	STAIR BASE FRAME	1		
2	PS-23852-A	STAIR ASSEMBLY	1		
3	PS-23847	LATCH ASSEMBLY	1		
4	PS-62996-A	HYDRAULIC CYLINDERS (Stair)	1		
5	PS-80103A-SLD	POWER PACK	1		

# FOLDING STAIRWAY

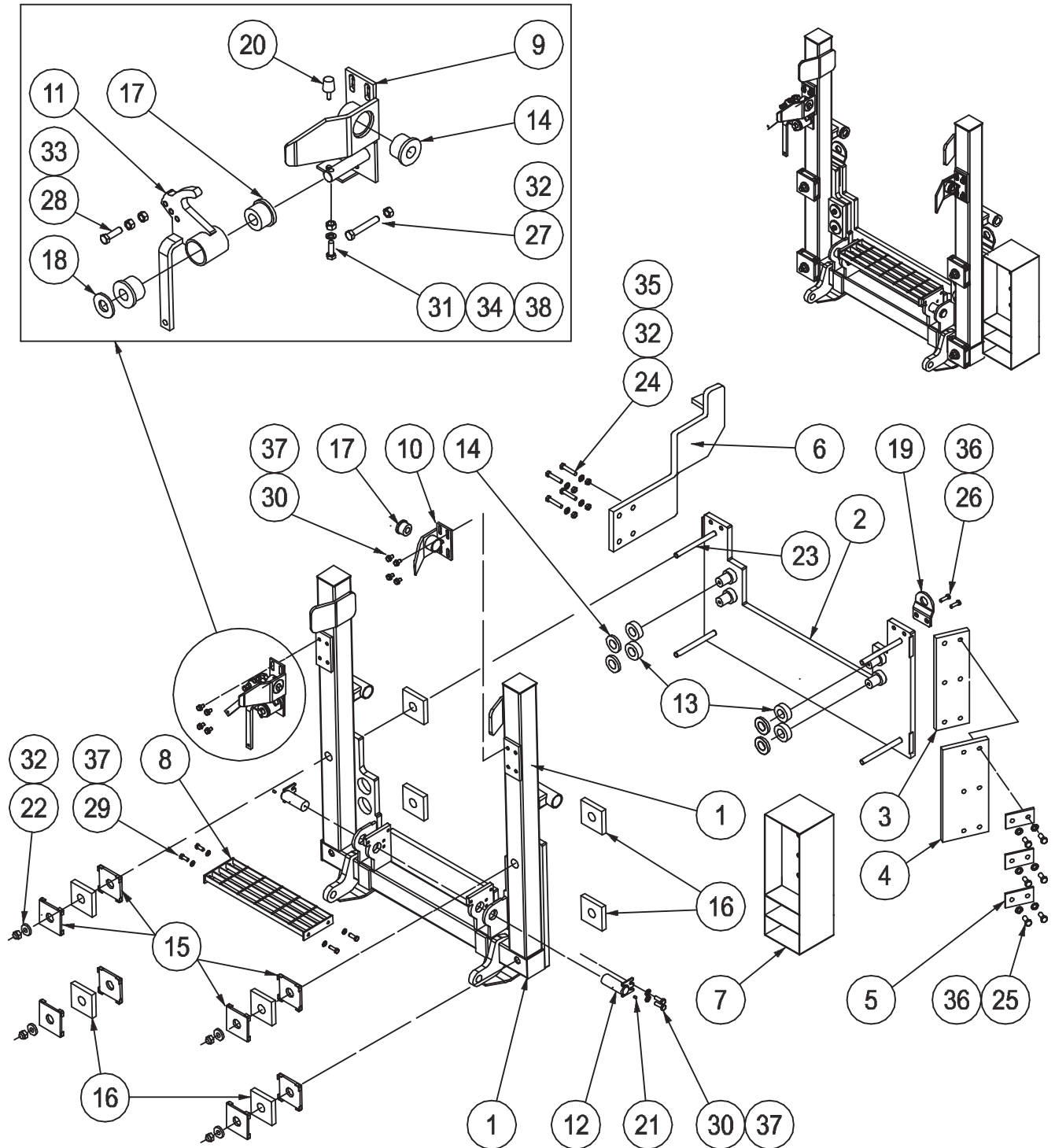
## Komatsu WD 900 Loader



### Section 5.1 Base Frame and Mounting Assembly

PS-23838-900

See Parts List Pg. 12



# FOLDING STAIRWAY

## Komatsu WD 900 Loader



### Section 5.1 Base Frame and Mounting

PS-23838-A

See Drawing Page 11

PS-23838-A (Excl.Items 2, 3, 4, 5, 6, 7, 19, 23, 24, 25, 26, 32, 35, 36)

Item	Part No.	Part Name	Qty		
1	PS-23838	BASE FRAME	1		
2	PSA-002-B02	MOUNTING PAD FABRICATION	1		
3	PSA-WD900-C04	BUMPER WELD-ON PLATE	1		
4	PSA-WD900-C03	CONNECTION PLATE	1		
5	PSA-002-C05	PLATE WASHER	3		
6	PSA-002-B01	ARM FABRICATION	1		
7	PSA-002-C06	SWITCH BOX	1		
8	PS-23839	TOP STAIR TREAD	1		
9	PS-23841-98	STRIKER-LEFT SIDE	1		
10	PS-23841-99	STRIKER-RIGHT SIDE	1		
11	PS-23854	MANUAL RELEASE LEVER	1		
12	PS-23828	HINGE PIN	2		
13	PS-23836-02	SHEAR ISOLATOR ELEMENT	4		
14	PS-23834-01	SHEAR ISOLATOR CAP	2		
15	PS-23833-99	ISOLATOR COVER PLATE	8		
16	PS-23836-01	FACE ISOLATOR ELEMENT	1		
17	PS-23846-02	LATCH BUSH	8		
18	PS-23846-03	RELEASE LEVER SPACER	1		
19	PS-23860	LIFT LUG	2		
20	PS-1066553	LATCH LEVER BUFFER Mackay 12252555 M6	1		
21	PS-61006-2	GREASE NIPPLE M6	2		
22	PS-23834-03	FACE ISOLATOR WASHER	4		
23	PS-M20X250	THREADED ROD-M20 x 250	4		
24	CPS-M20X90ZP	BOLT-M20 x 90	4		
25	CPS-M16X60ZP	BOLT-M16 x 60	6		
26	CPS-M16X30ZP	BOLT-M16 x 30	6		
27	CPS-M12X75ZP	BOLT-M12 x 75	1		
28	CPS-M12X40ZP	BOLT-M12 x 40	1		
29	CPS-M12X25ZP	BOLT-M12 x 25	4		
30	CPS-M12X20ZP	BOLT-M12 x 20	8		
31	CPS-M8X35ZP	BOLT-M8 x 35	1		
32	CPS-M20NZP	NUT-M20	4		
33	PS-M12NZP	NUT-M12	2		
34	PS-M8NZP	NUT-M8	1		
35	CPS-M20WH	WASHER-HARDENED-M20	12		
36	CPS-M16WH	WASHER-HARDENED-M16	4		
37	CPS-M12WH	WASHER-HARDENED-M12	16		
38	CPS-M8WH	WASHER-HARDENED-M8	1		

# FOLDING STAIRWAY

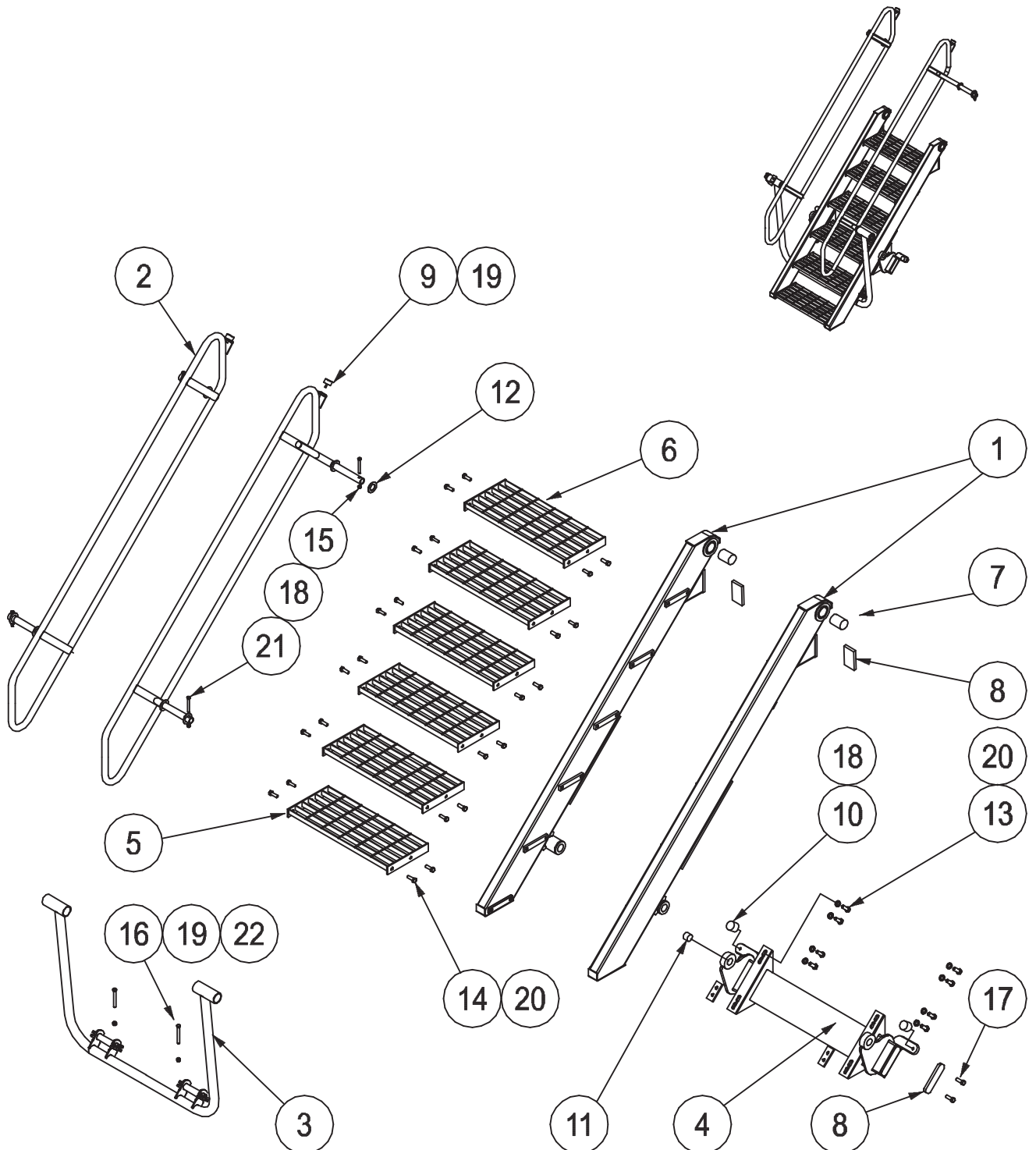
## Komatsu WD 900 Loader



### Section 5-2 Stair Assembly

PS- 23-852-A

See Parts List Page 14



# FOLDING STAIRWAY

## Komatsu WD 900 Loader



### Section 5-2 Stair Assembly PS- 23852A

See Drawing Page 13

Item	Part No.	Part Name	Qty		
1	PS-23852	STAIR STILE (6 Tread)	1		
2	PS-23862	STAIR HANDRAILS	2		
3	PS-23863	HANDRAIL LINK POST	1		
4	PS-23849	STAIR ACTUATOR BEAM	1		
5	PS-22266	STAIR TREAD	6		
6	PS-23839	STAIR TREAD -TOP	1		
7	PS-23857	HINGE BUSH	2		
8	PS-23848-07	BUMPER PAD (Rubber)	2		
9	PS-40002	BUFFER-RUBBER-MACKAY M12402055 M8	2		
10	PS-40003	BUFFER-RUBBER-MACKAY M12503555 M10	2		
11	PS-23849-01	BUSH-(Stair Actuator Beam)	2		
12	PS-23862-05-3	WASHER	4		
13	CPS-M12X30ZP	BOLT-M12 x 30	8		
14	CPS-M12X20ZP	BOLT-M12 x 20	24		
15	CPS-M10X85ZP	BOLT-M10 x 85	4		
16	CPS-M8X75ZP	BOLT-M8 x 75	4		
17	CPS-M6X15ZP	BOLT-M6 x 15	4		
18	CPS-M10NN	NUT-NYLOC-M10	6		
19	CPS-M8NN	NUT-NYLOC-M8	6		
20	CPS-M12WH	WASHER-HARDENED-M12	32		
21	CPS-M10WH	WASHER-HARDENED-M10	4		
22	CPS-M8WH	WASHER-HARDENED-M8	8		



## FOLDING STAIRWAY

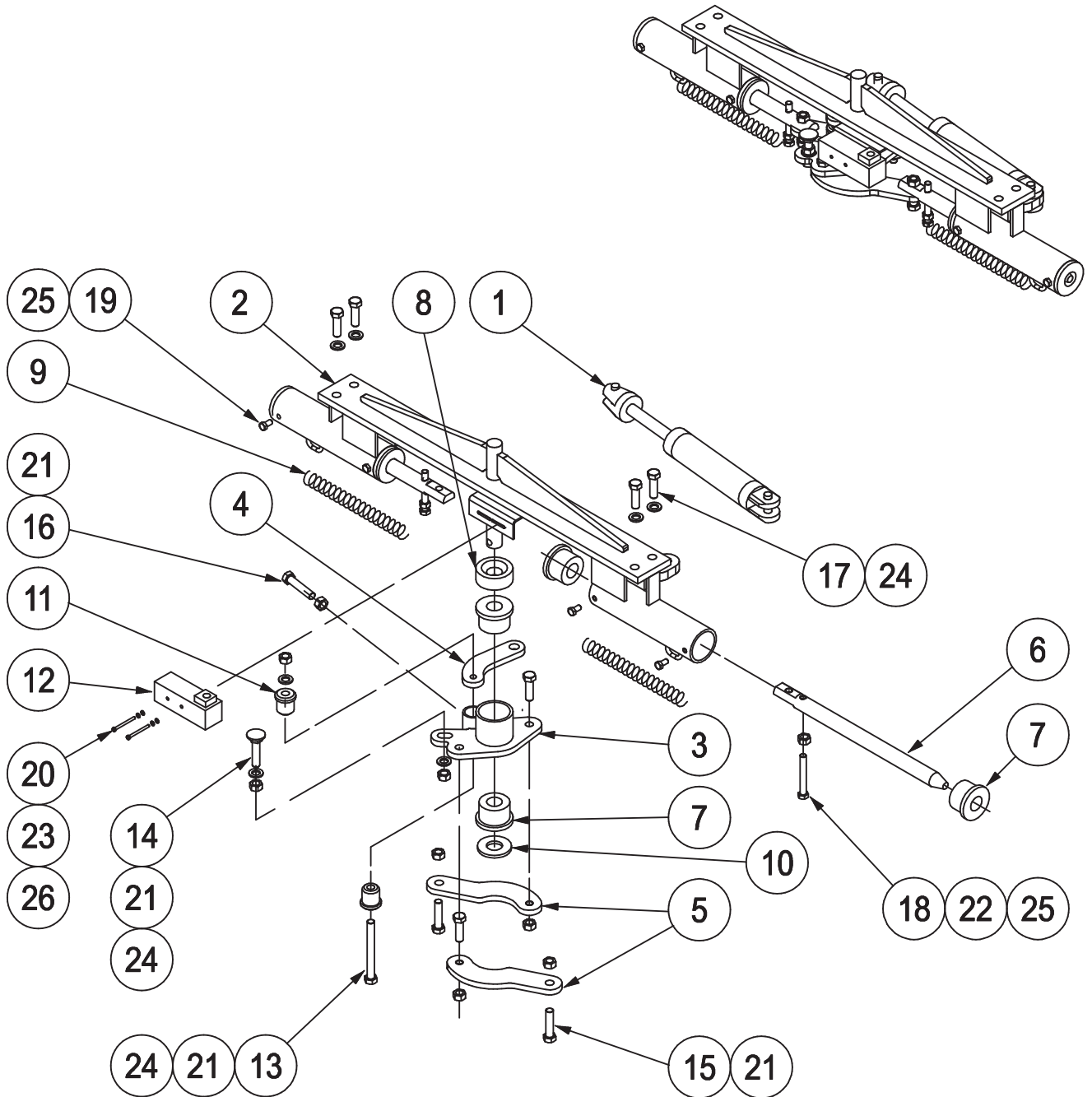
### Komatsu WD 900 Loader



## Section 5-3 Latch Assembly

**PS-23847**

See Parts List Pg.16



# FOLDING STAIRWAY

## Komatsu WD 900 Loader



### Section 5-3 Latch Assembly

PS-23847

See Drawing Page 15

Item	Part No.	Part Name	Qty		
1	PS-62997	CYLINDER	1		
2	PS-23842	LATCH BASE	1		
3	PS-23845-99	LATCH WRIST	1		
4	PS-23845-98	ACTUATOR ARM	1		
5	PS-23844-01-10	BOLT LINK	2		
6	PS-23843	LATCH BOLT	2		
7	PS-23846-02	LATCH BUSH	6		
8	PS-23846-01	WRIST SPACER	2		
9	PS-23847-SPRING	SPRING	2		
10	PS-23844-02-5	WASHER	4		
11	PS-S245	LATCH BUSH-(WRIST PLATE) S245	2		
12	PS-75430	PROXIMITY SWITCH	1		
13	PS-M12X110ZP	BOLT-M12 x 110	1		
14	CPS-M12X55ZP	BOLT-M12 x 55 (Striker)	1		
15	CPS-M12X40ZP	BOLT-M12 x 40	4		
16	CPS-M12X35ZP	BOLT-M12 x 35	1		
17	CPS-M12X25ZP	BOLT-M12 x 25	4		
18	CPS-M10X75ZP	BOLT-M10 x 75	2		
19	CPS-M10X15ZP	BOLT-M10 x 15	4		
20	CPS-M5X50ZP	BOLT-M5 x 50	2		
21	CPS-M12NZP	NUT-M12	1		
22	CPS-M10NZP	NUT-M10	6		
23	CPS-M5NN	NUT-NYLOC-M5	2		
24	CPS-M12WH	WASHER-HARDENED-M12	12		
25	CPS-M10WH	WASHER-HARDENED-M10	6		
26	CPS-M5WH	WASHER-M5	2		

# FOLDING STAIRWAY

## Komatsu WD 900 Loader

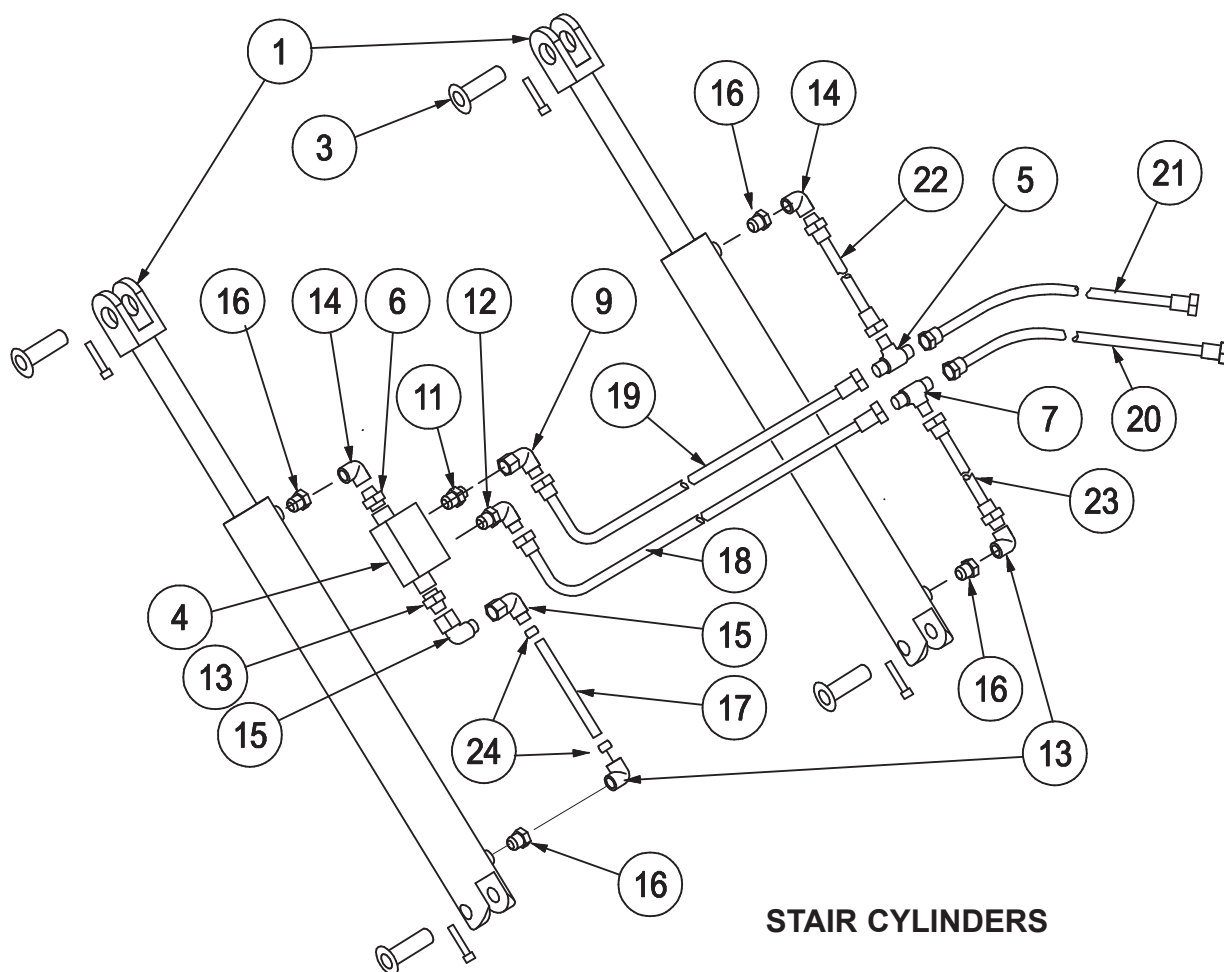
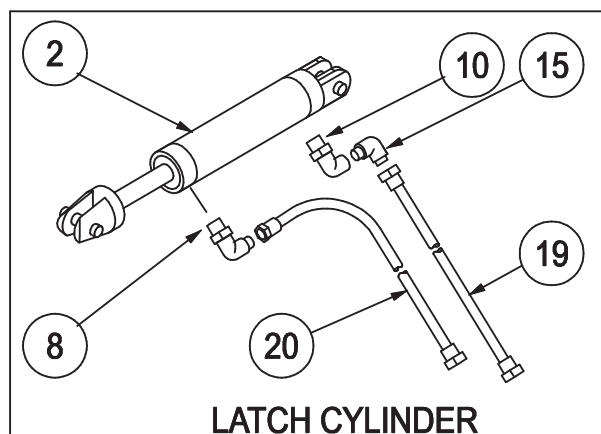
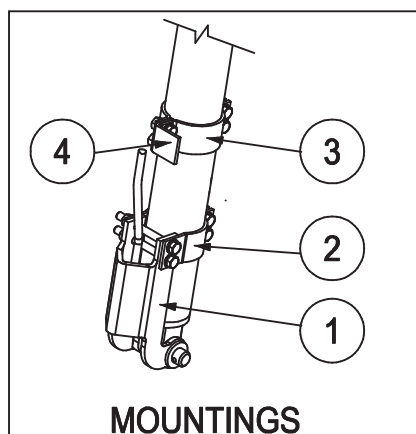


### Section 5-4 Hydraulic Cylinders

P/No. PS- 62996-A (Stair)

P/No. PS- 62997-A (Latch)

See Parts list Pg. 18



# FOLDING STAIRWAY

## Komatsu WD 900 Loader



### Section 5-4 Hydraulic Cylinders

See Drawing Pg. 17

Item	Part No.	Part Name	Qty		
1	PS-62996-A	HYDRAULIC CYLINDER ASSEMBLY	2		
-	PS-63103	SEAL KIT-STAIR (NOT SHOWN)	1		
2	PS-62997	HYDRAULIC CYLINDER - LATCH	1		
-	PS-62997-SK	SEAL KIT-LATCH (NOT SHOWN)	1		
3	PS-23856	CYLINDER PINS	2		
4	PS-63201	VALVE - PILOT OPERATED LOCKING	1		
5	PS-61140	FITTING-T -7/16"	1		
6	PS-61145	FITTING - 9/16" JIC SWIVEL	1		
7	PS-61149	FITTING - T 9/16"	1		
8	PS-61150	FITTING - ELBOW 7/16"	1		
9	PS-61151	FITTING - ELBOW 7/16"	2		
10	PS-61152	FITTING - ELBOW 9/16"	2		
11	PS-61153	FITTING - 1/4" BSPPx7/16" STRAIGHT	2		
12	PS-61154	FITTING - ELBOW- O RING 1/4BSPPx7/16"JIC	1		
13	PS-61157	FITTING - STRAIGHT 1/4"BSPPx9/16"JIC	1		
14	PS-61158-5mm	FITTING - 5mm RESTRICTION 90 DEG	4		
15	PS-61159	FITTING- ELBOW 9/16"	4		
16	PS-61163	REDUCER JIC x BSPP	1		
17	PS-61160	TUBE-900/1200	1		
18	PS-60051-900mm9/16	HOSE-HYDR. (9/16"JIC ST. SWIVEL 0.9M)	1		
19	PS-60051-900mm7/16	HOSE-HYDR. (7/16"JIC ST. SWIVEL 0.9M)	1		
20	PS-60051-3.5M 9/16	HOSE-HYDR. (9/16"JIC ST. SWIVEL 3.5M)	2		
21	PS-60051-3.5M 7/16	HOSE-HYDR. (7/16"JIC ST. SWIVEL 3.5M)	2		
22	PS-60051-280mm9/16	HOSE-HYDR. (9/16"JIC ST. SWIVEL 0.28M)	1		
23	PS-60050-280mm7/16	HOSE-HYDR. (7/16"JIC ST. SWIVEL 0.28M)	1		
24	PS-60031-FT	FERRULES	2		

### MOUNTINGS

Item	Part No.	Part Name	Qty		
1	PS-23855-98	PORT SHIELD PLATE	2		
2	PS-23855-02-5	PORT SHIELD CLAMP	4		
3	PS-23855-99	PIPE SUPPORT MOUNTING	2		
4	PS-23855-03-5	PIPE SUPPORT CLAMP	4		

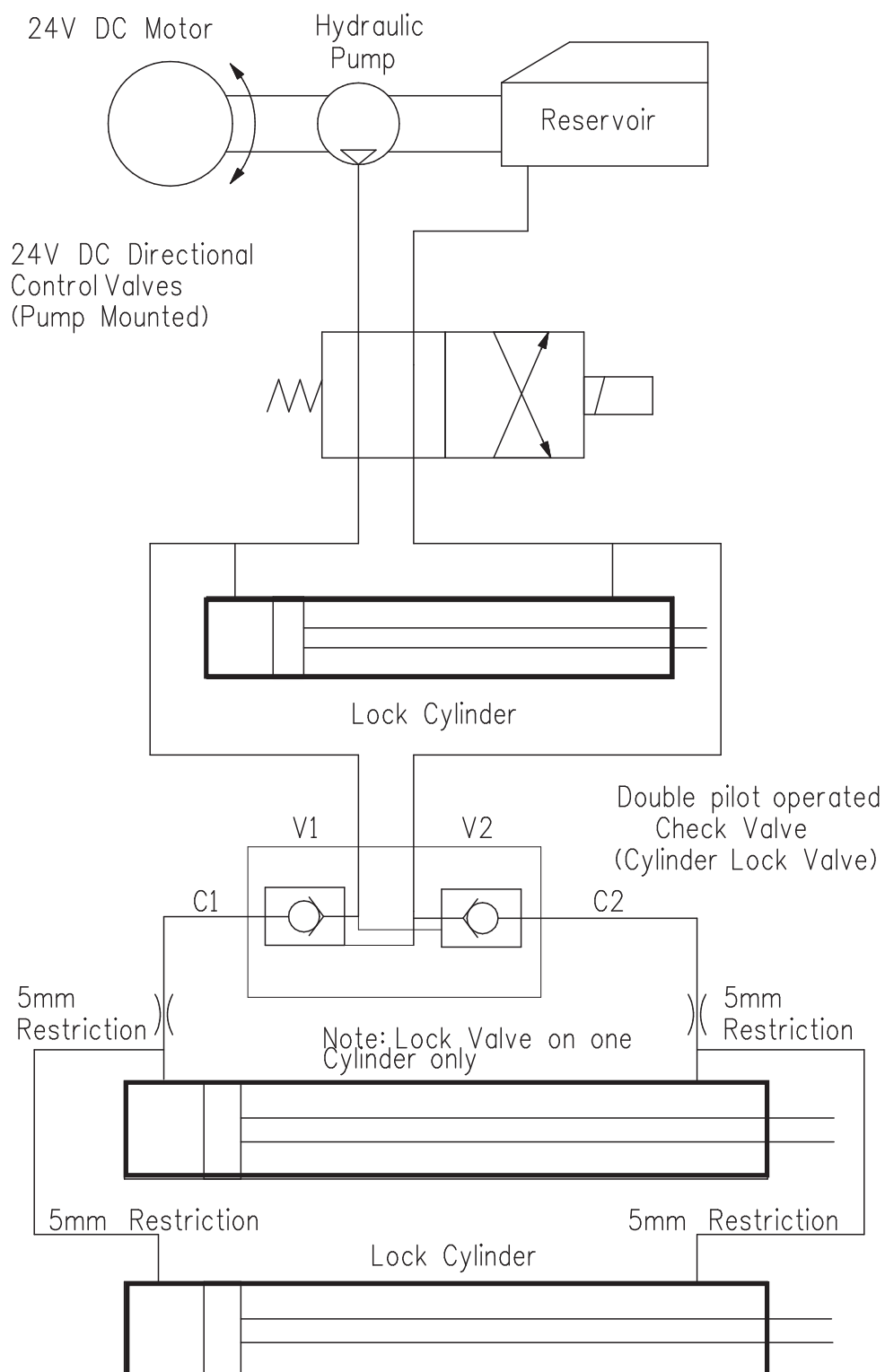
# FOLDING STAIRWAY

## Komatsu WD 900 Loader



### Section 5-4 Hydraulic Cylinder (Valve Diagram)

Double Acting Hydraulic System with  
directional Control Valves and Cylinder  
Lock Valves



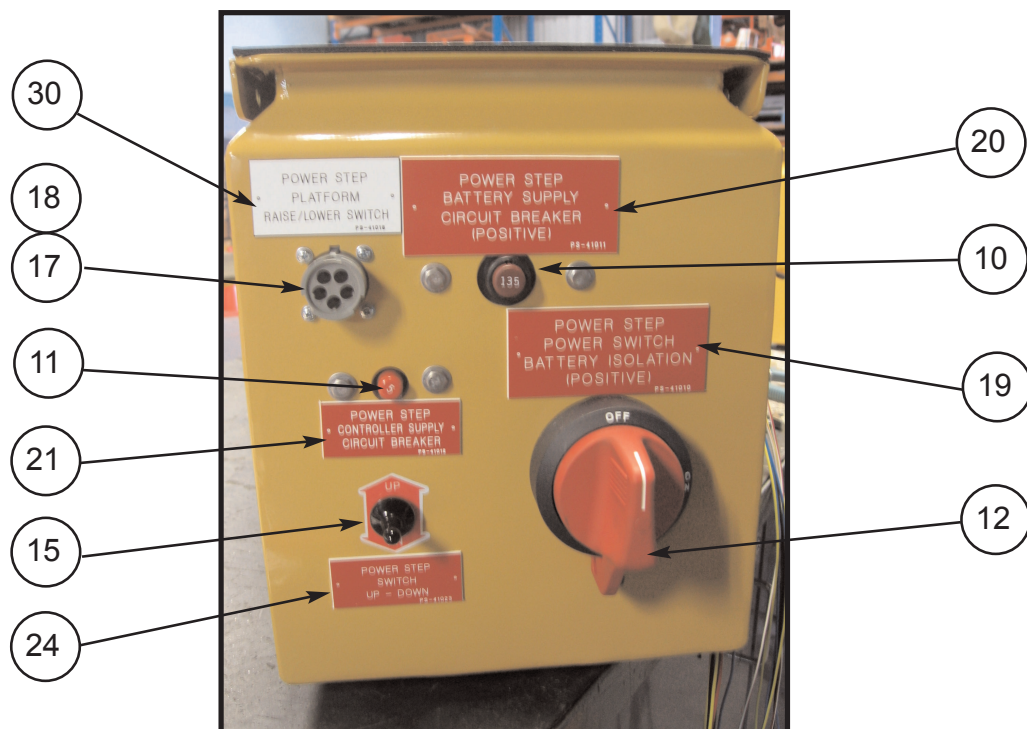
# FOLDING STAIRWAY

## Komatsu WD 900 Loader

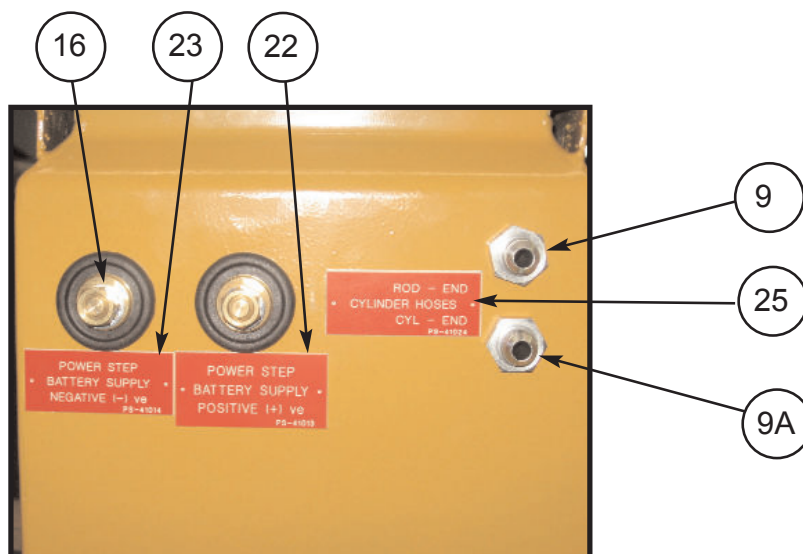


### Section 5-5 Power Pack PS-80103A-SLD

See Parts List Pg 22



View A



View B

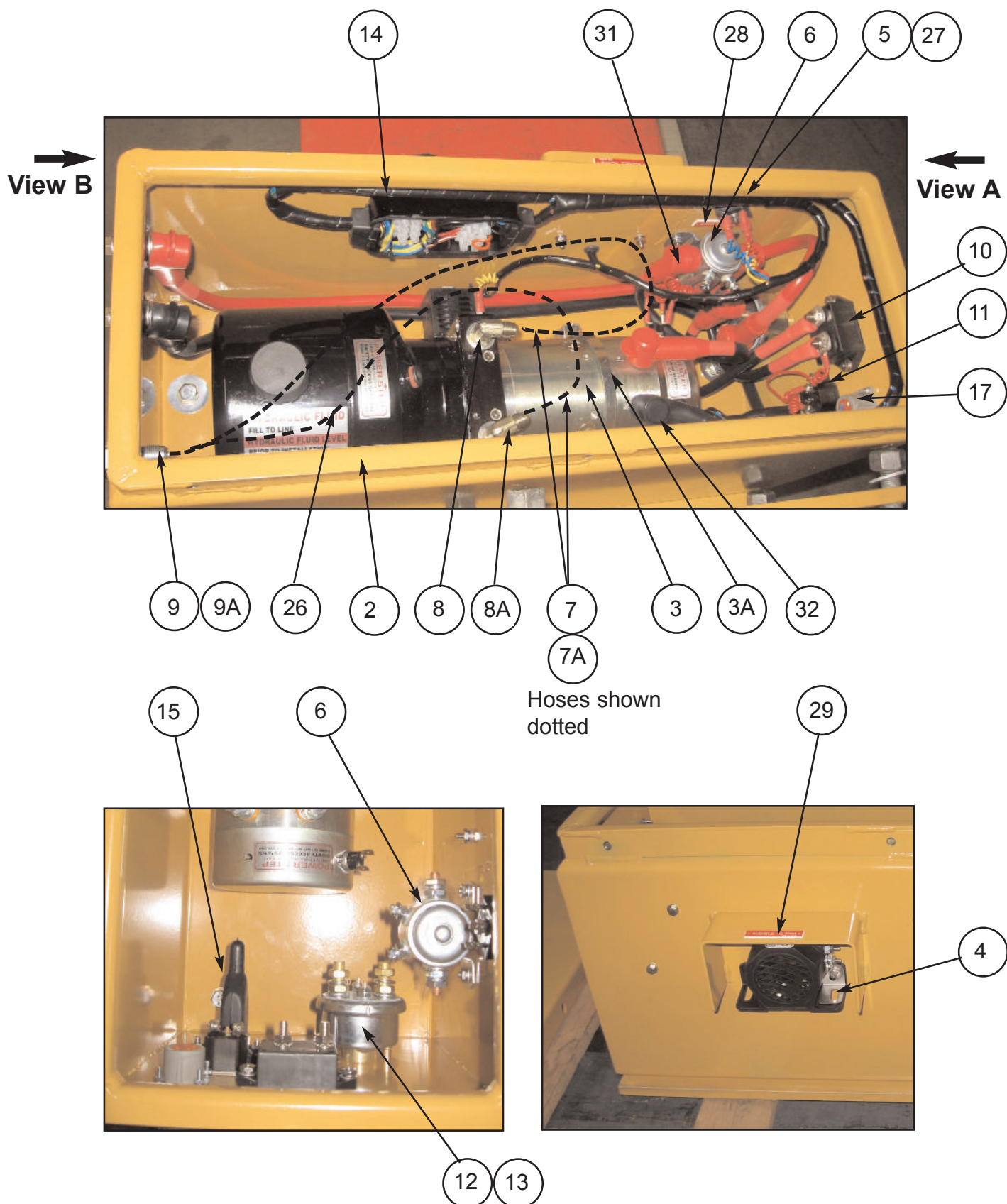


# FOLDING STAIRWAY Komatsu WD 900 Loader



## Section 5-5 Power Pack PS- 80103A-SLD

See Parts List Pg 22



# FOLDING STAIRWAY

## Komatsu WD 900 Loader



### Section 5-5 Power Pack

PS-80103A-SLD

See Photos Pg 20 & 21

Item	Parte No.	Nombre de Parte	Cant		
1	PS-80103A-SLD	POWER PACK ASSEMBLY	1		
2	PS-21107-METAL	MOTOR ENCLOSURE- SEALED ST/ST	1		
3	PS-80103A	POWER PACK	1		
3A	PS-80103-CLAMP	CLAMP ELECTRIC MOTOR	1		
4	PS-82415	AUDIBLE ALARM	1		
5	PS-84214	BRIDGE RECTIFIER	1		
6	PS-82492	SOLENOID 24V START MOTOR	1		
7	PS-60050-900MM 9/16"	HYDR. HOSES 9/16" JIC STRAIGHT SWIVEL	1		
7A	PS-60050-900MM 7/16"	HYDR. HOSES 7/16" JIC STRAIGHT SWIVEL	1		
8	PS-61152	HYDRAULIC FITTING 9/16"	1		
8A	PS-61150	HYDRAULIC FITTING 7/16"	1		
9	PS-61177	HYDRAULIC FITTING 9/16"	1		
9A	PS-61176	HYDRAULIC FITTING 7/16"	1		
10	PS-84213	135A CIRCUIT BREAKER	1		
11	PS-84212	5A CIRCUIT BREAKER	1		
12	PS-84303	ISOLATION SWITCH	1		
13	PS-84303-B	ISOLATION SWITCH BRACKET	1		
14	PS-1712080	SEALED WIRING BOX	1		
15	PS-73012	TOGGLE SWITCH KIT	1		
16	PS-82493	BATTERY FEED STUDS	2		
17	PS-HD10-5-16P	5 PIN SOCKET	1		
18	PS-HD10-5-16S	5 PIN PLUG	1		
19	PS-41010/S	DECAL-Battery Isolation	1		
20	PS-41011/S	DECAL-Battery Supply C/B-135A	1		
21	PS-41012/S	DECAL-Controller Supply C/B-10A	1		
22	PS-41013/S	DECAL-Battery Supply-Positive	1		
23	PS-41014/S	DECAL-Battery Supply-Negative	1		
24	PS-41023/S	DECAL-Up/Down	1		
25	PS-41024/S	DECAL HYDRAULIC-HOSES	1		
26	PS-41041/S	DECAL OIL TANK	1		
27	PS-41019/S	DECAL BRIDGE RECTIFIER	1		
28	PS-41017/S	DECAL SOLENOID	1		
29	PS-41018/S	DECAL ALARM	1		
30	PS-41016/S	DECAL RAISE/LOWER SWITCH	1		
31	PS-73010	RUBBER BOOT RED	6		
32	PS-73009	RUBBER BOOT BLACK	3		

# FOLDING STAIRWAY

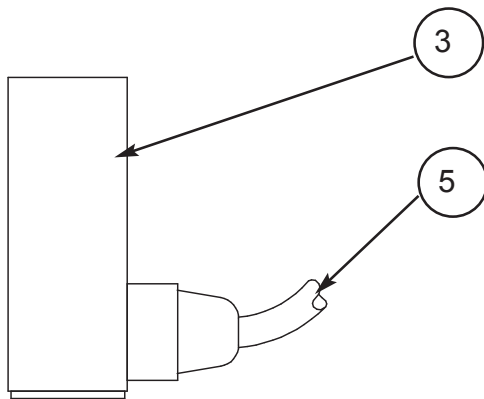
## Komatsu WD 900 Loader



### Section 5-6 Electrical Controls

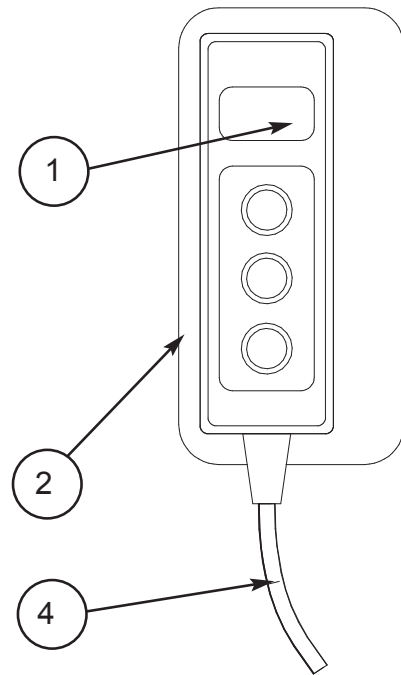
#### Proximity Switch Assembly

Mounted on Fixed Landing



#### Control Pendant Switch

Mounted on Handrail



#### Cab Harness & Equipment

Refer Wiring Harness Drawing Page 26



# FOLDING STAIRWAY

## Komatsu WD 900 Loader



### Section 5-6 Electrical Controls

See Page 23

Item	Part No.	Part Name	Qty		
1	PS-73013	CONTROL PENDANT SWITCH	1		
2	PS-73013-B	CONTROL PENDANT BRACKET	1		
3	PS-75430	PROXIMITYSWITCH	1		
4	PS-77005	HAND RAIL SWITCH HARNESS	1		
5	PS-77004	PROXIMITY MAGNETIC SWITCH HARNESS	1		
6	PS-77002	CABIN BOX LED LIGHT INDICATOR	1		
7	PS-77003	WIRING HARNESS	1		

### **WARNING**

**LOW VOLTAGE BATTERIES WILL HARM THE FUNCTION OF THE POWER PACK AND THE CONTROL SWITCHES.**

**DAMAGE RESULTING DUE TO LOW VOLTAGE BATTERIES WILL VOID WARRANTY ON ALL ELECTRICAL COMPONENTS.**



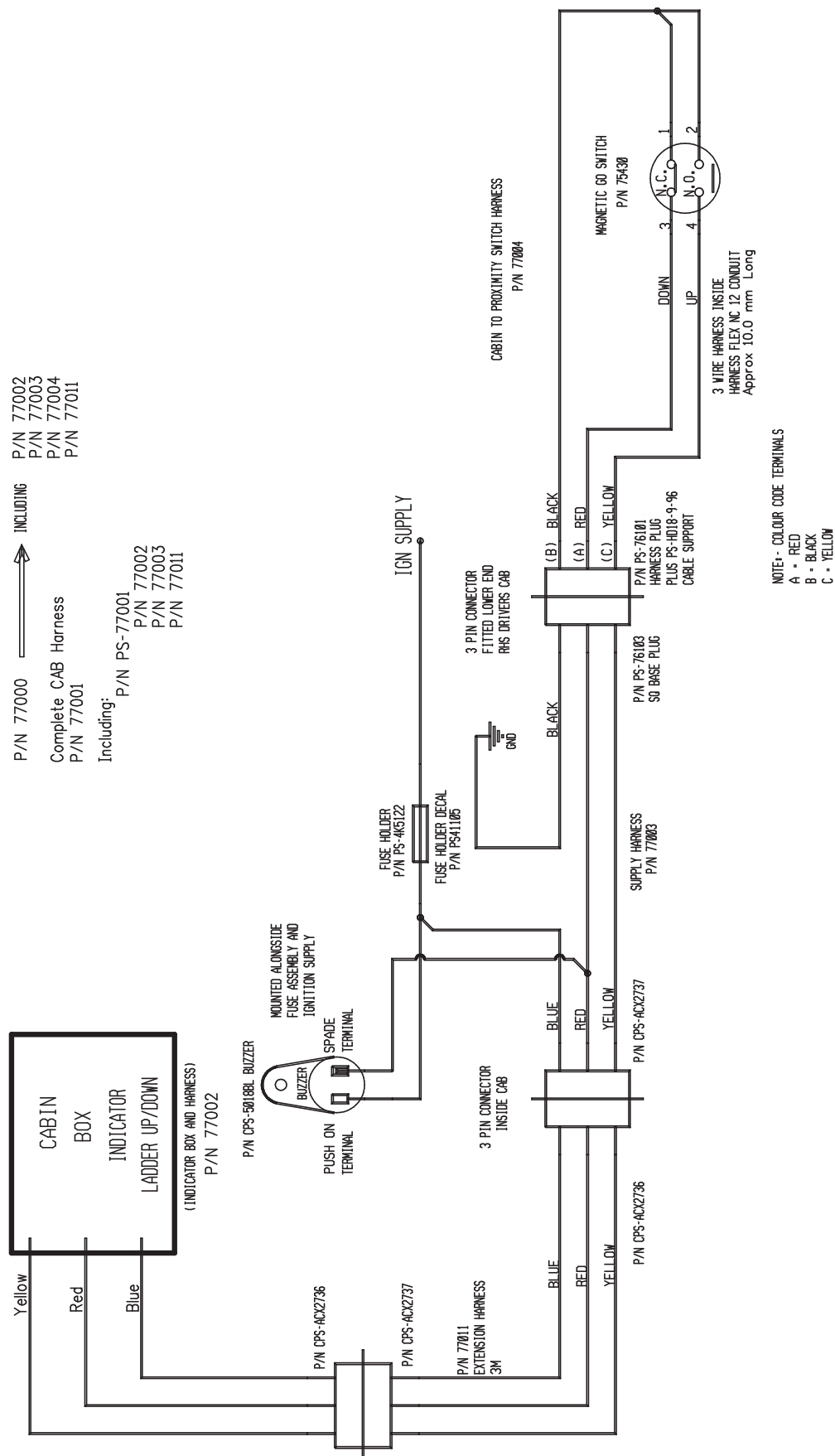
# FOLDING STAIRWAY

## Komatsu WD 900 Loader



### Section 5-6 Electrical Controls Wiring Harness

#### WIRING HARNESS

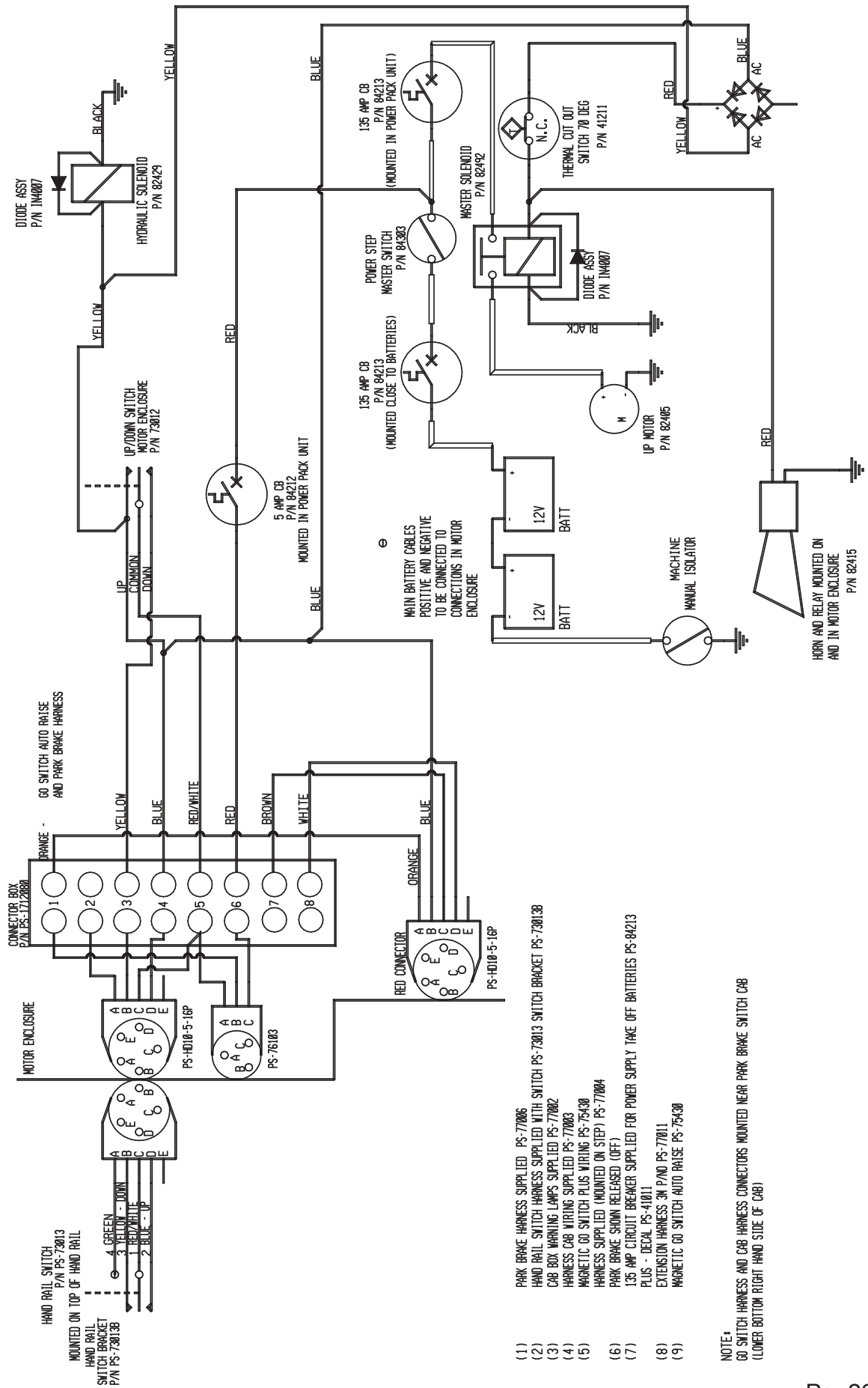


# FOLDING STAIRWAY

## Komatsu WD 900 Loader



### Section 5-6 Electrical Controls Electrical Layout 1.



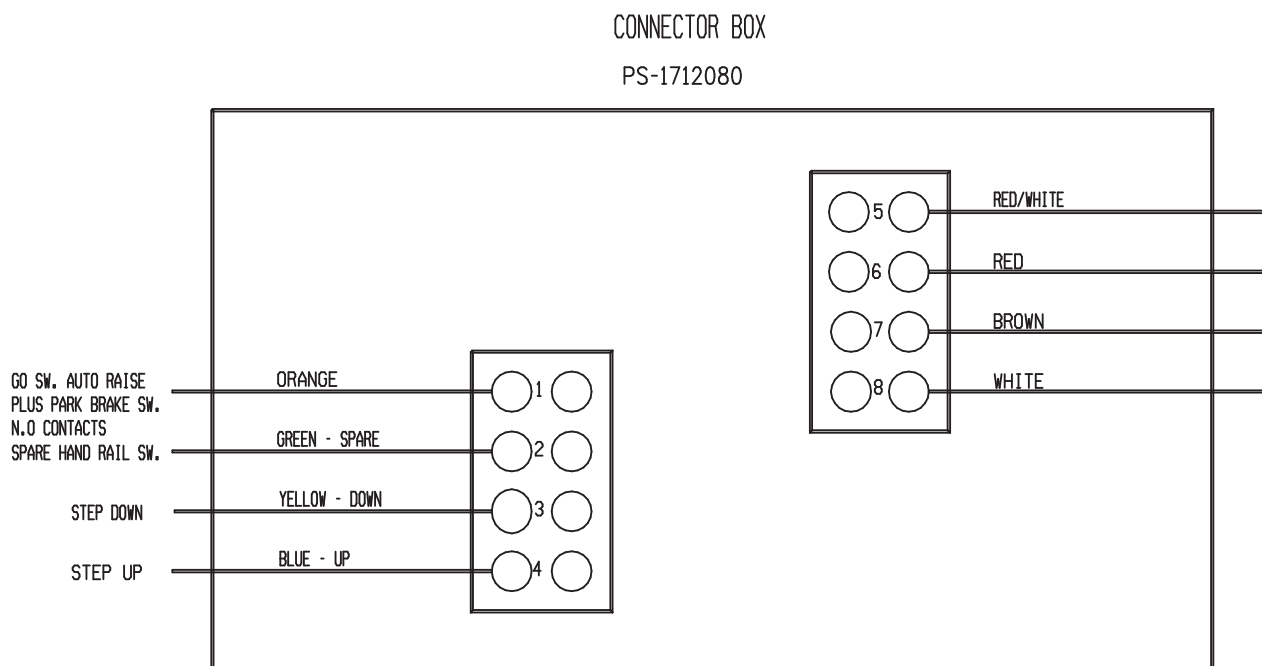


# FOLDING STAIRWAY

## Komatsu WD 900 Loader



### Section 5-6 Electrical Controls Electrical Layout 2.



GO SWITCH HARNESS (CABIN TO GO SWITCH) - P/N PS-77004  
(CABIN INDICATOR LADDER UP/DOWN)

BLACK	-	NO 1 TERMINAL N.C. CONTACT
BLACK	-	NO 2 TERMINAL N.O. CONTACT
(BRIDGE NO 1 AND NO 2 IN GO SW)		
RED	-	NO 3 TERMINAL N.C. CONTACT
YELLOW	-	NO 4 TERMINAL N.O. CONTACT

3 PIN PLUG CONNECTOR PINS  
LOWER R/H OUTSIDE CAB

(B)

(A)

(C)

LENGTH 10m  
(HARNESS FLEX NO 12)

HAND RAIL SWITCH HARNESS (P/N 77010)  
(HANDRAIL SW TO POWER PACK BOX)

COLOUR	SW CONTACTS	TERMINAL NO
RED/WHITE	NO 1	NO 5
BLUE	NO 2	NO 4
YELLOW	NO 3	NO 3
GREEN	NO 4	NO 2

5 PIN PLUG CONNECTOR PINS  
MOTOR ENCLOSURE

(C)

(D)

(B)

(A)

LENGTH 10m  
(HARNESS FLEX NO 12)

# FOLDING STAIRWAY

## Komatsu WD 900 Loader



### Section 5-6 Electrical Controls Electrical Layout 3.

#### WIRING HARNESS

GO SWITCH - CABIN INDICATOR P/S-77002

SUPPLIED WITH CONNECTOR P/N CPS-ACX2736

UP/DOWN LIGHTS

N.C.	-	RED	-	BLACK	] LINKED
N.O.	-	YELLOW	-	BLACK	

HAND CONTROL SWITCH - MOUNTED ON HANDRAILS - P/N 73013

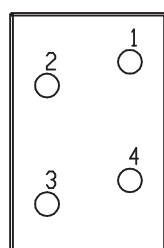
POWER STEP WIRING HARNESS (10M) AND CONNECTIONS SUPPLIED

CONTACTS

1	-	RED/WHITE	-	POWER SUPPLY
2	-	BLUE	-	UP SWITCH
3	-	YELLOW	-	DOWN SWITCH
4	-	GREEN	-	START SOL MOTOR [FRS POWER PACK ONLY (SPARE)]

PENDANT SWITCH

STANDARD SWITCH WIRING AND CONNECTIONS



P/N PS-77013

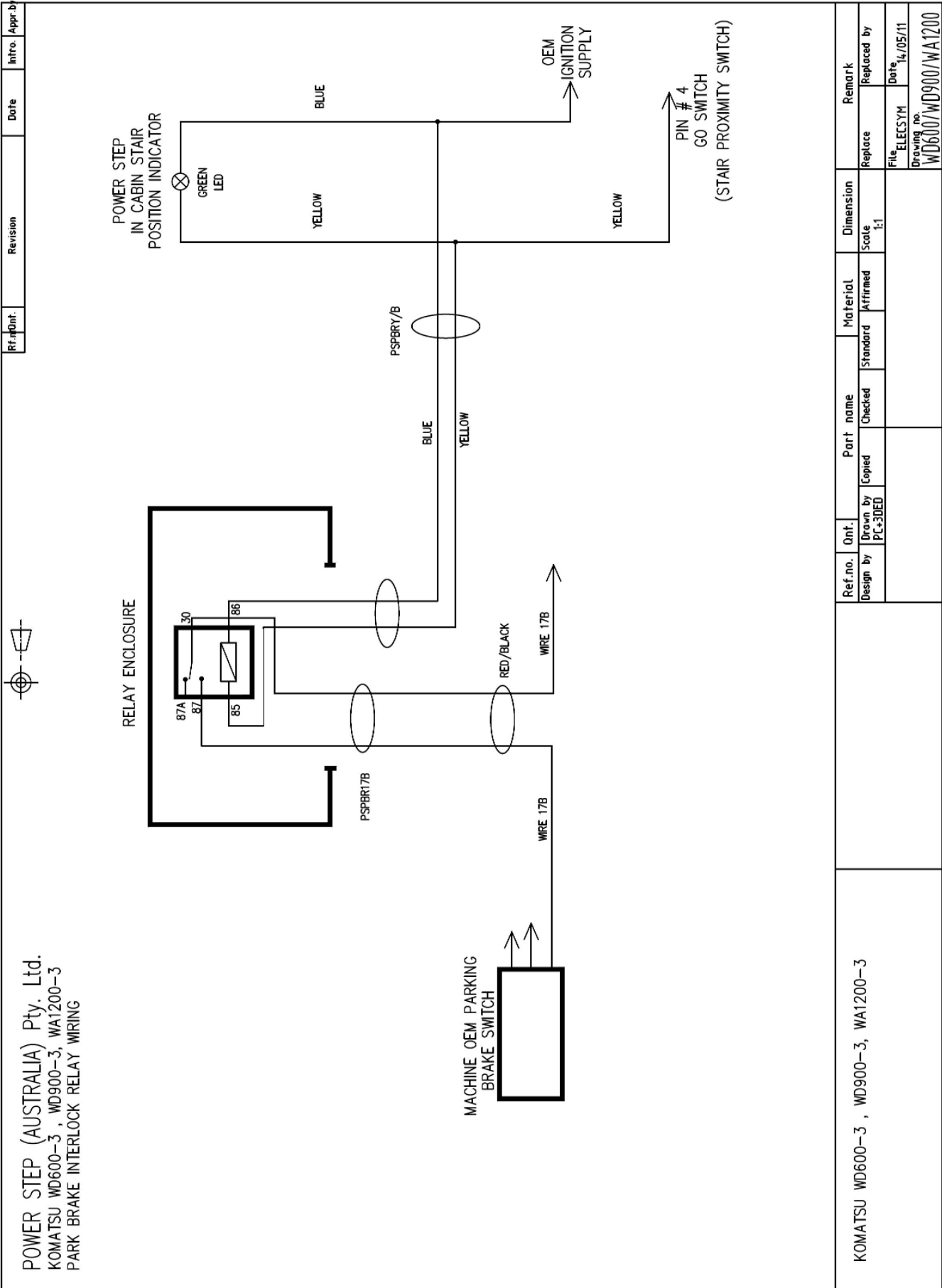
HARNESS AND CONNECTIONS SUPPLIED WITH SWITCH P/N 77013 (NOT REQUIRED)

1	-	POWER	-	GREEN	] [FRS POWER PACK SYSTEM ONLY]
2	-	UP SWITCH	-	WHITE	
3	-	DOWN SWITCH	-	BLACK	
4	-	START/SOL MOTOR	-	RED	

FOLDING STAIRWAY  
Komatsu WD 900 Loader



Section 5-6 Electrical Controls Wiring - Park Brake Interlock



# FOLDING STAIRWAY

## Komatsu WD 900 Loader



## Section 5-6 Electrical Controls Supplementary Layout

