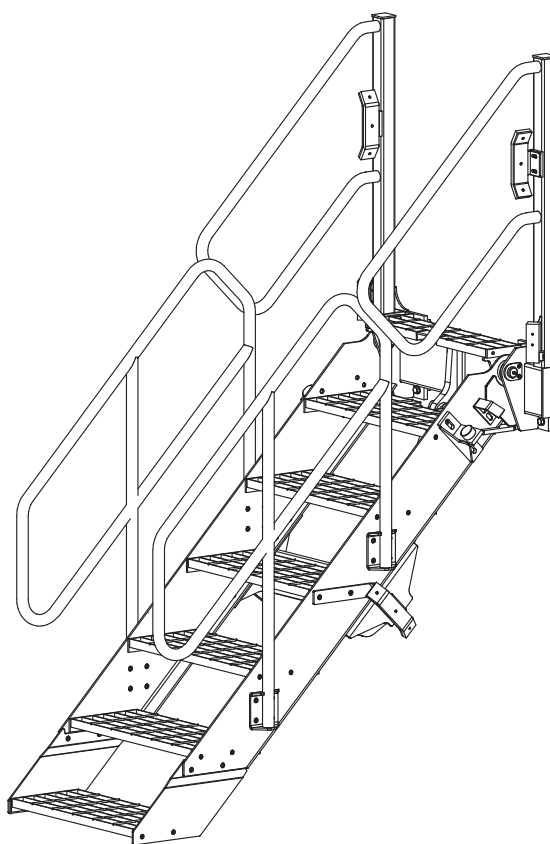




# FOLDING STAIRWAY

## Manual for Komatsu 930E Truck



Model No.: PSA-K930E-FS  
Serial No.:K930E-001 ~  
Date Manufactured:





## CONTENTS

|        |   |
|--------|---|
| Page 3 | <u>Section 1</u> Mounting and Installation  |
| 7      | <u>Section 2</u> Electrical Installation  |
| 8      | <u>Section 3</u> Operating Procedure<br>Mechanical & Hydraulic Adjustment procedure                   |
| 13     | <u>Section 4</u> Recommended Maintenance Procedure  |
| 14     | <u>Section 5</u> Assembly Complete-Main Assemblies  |
| 15     | 5-1 Assembly Complete<br>Parts List   |
| 16     | 5-2 Landing Assembly<br>Parts List  |
| 18     | 5-3 Stair Assembly<br>Parts List  |
| 20     | 5-4 Hydraulics -Cylinder Assembly<br>Cylinder and Components<br>Control box Assembly<br>Valve Diagram |
| 25     | 5-5 Electrical Cabinet Assy<br>Parts List   |
| 26     | 5-6 Electrical System<br>Wiring Diagrams<br>Harnesses   |
| 31     | Hydraulic Valve Kit   |
| 32     | Mounting Plates   |



# FOLDING STAIRWAY

## Komatsu 930E Truck



### Section 1. Mounting and Installation

See Page 4

#### **NOTE**

**Follow all on-site/Mine lifting and safety procedures when installing PSFS to Truck.**

#### **PROCEDURE** (Drawings 23635 & 23636)

##### **See Drawing 23635 (Adjustments)**

1. Set up the stair set with bolting faces of the landing vertical, like it will be when installed on the truck.
2. With one of the cylinder pins removed, lower the stair to its' deployed position as seen in View 2. Adjust the angle of inclination of the stair to 44 - 45Deg. to the horizontal. Adjust by grinding the stop pads on both stiles or by building the stop pads up with weld and then grinding. The bearing faces should be smooth and flat so as not to bite into the flange plate quickly, thereby losing the adjustment. (This procedure should be repeated periodically during the service life of the stair set.) Views 2 & 3.
3. Replace the cylinder pin and fully retract the cylinder. Ensure that the retracted cylinder allows the stair to decline to the angle set in ii above. If not, adjust the position of 23 675 Stair Actuator Attachment on the stair stile. View 2.
4. By extending the cylinder, raise the stair to the vertical stowed position. View 1.
5. Adjust the position of the Stair Buffer Bracket 23 653 on the stair stile so that the buffer is compressed firmly when the stair is in the stowed position. View 1.
6. Adjust the positions of the Handrail Bumpers 23 651 mounted to the stair stiles and handrail posts so they bear firmly on the handrails when the stair is stowed. These bumpers are there to prevent vibration and rattling. View 1.
7. Adjust the position of the Go Switch Trigger 23 657 so the Go Switch creates the appropriate connection when the stair is raised, View 4.

##### **See Drawing 23636 (Bolting Pads)**

1. Per Views 1, 2 & 3, attach the Bolting Pads to the bolt-on bumper extension at the end of the central fixed bumper. Weld only to the extension.
2. Per View 4, fit the assembled stair set to the bolting pads, without the Landing Deck or Landing Floor Infill fitted.
3. Per Views 5 and 6, fit the Landing Floor Infill and then the Landing Deck.

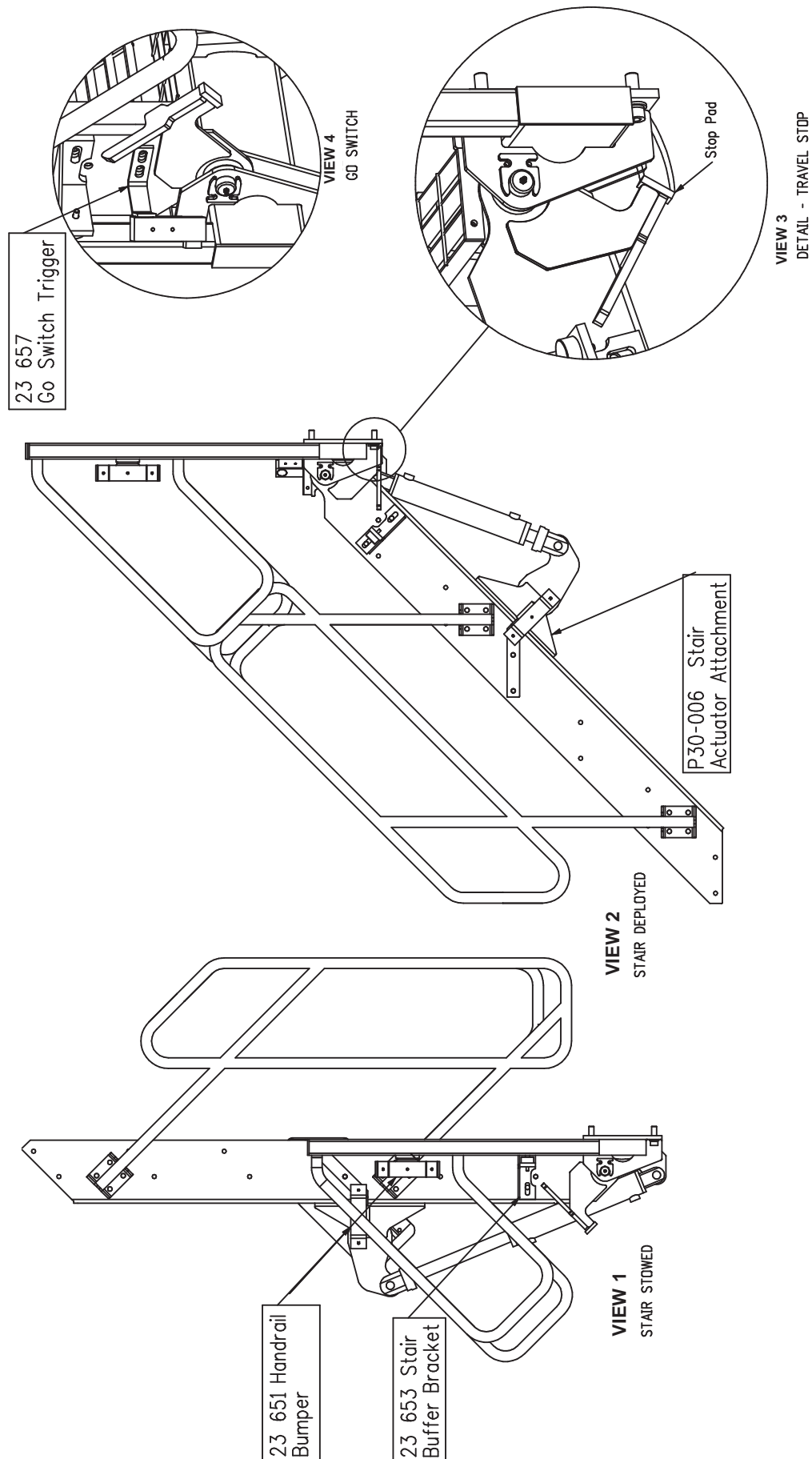


# FOLDING STAIRWAY

## Komatsu 930E Truck



### Section 1. Mounting and Installation 23635



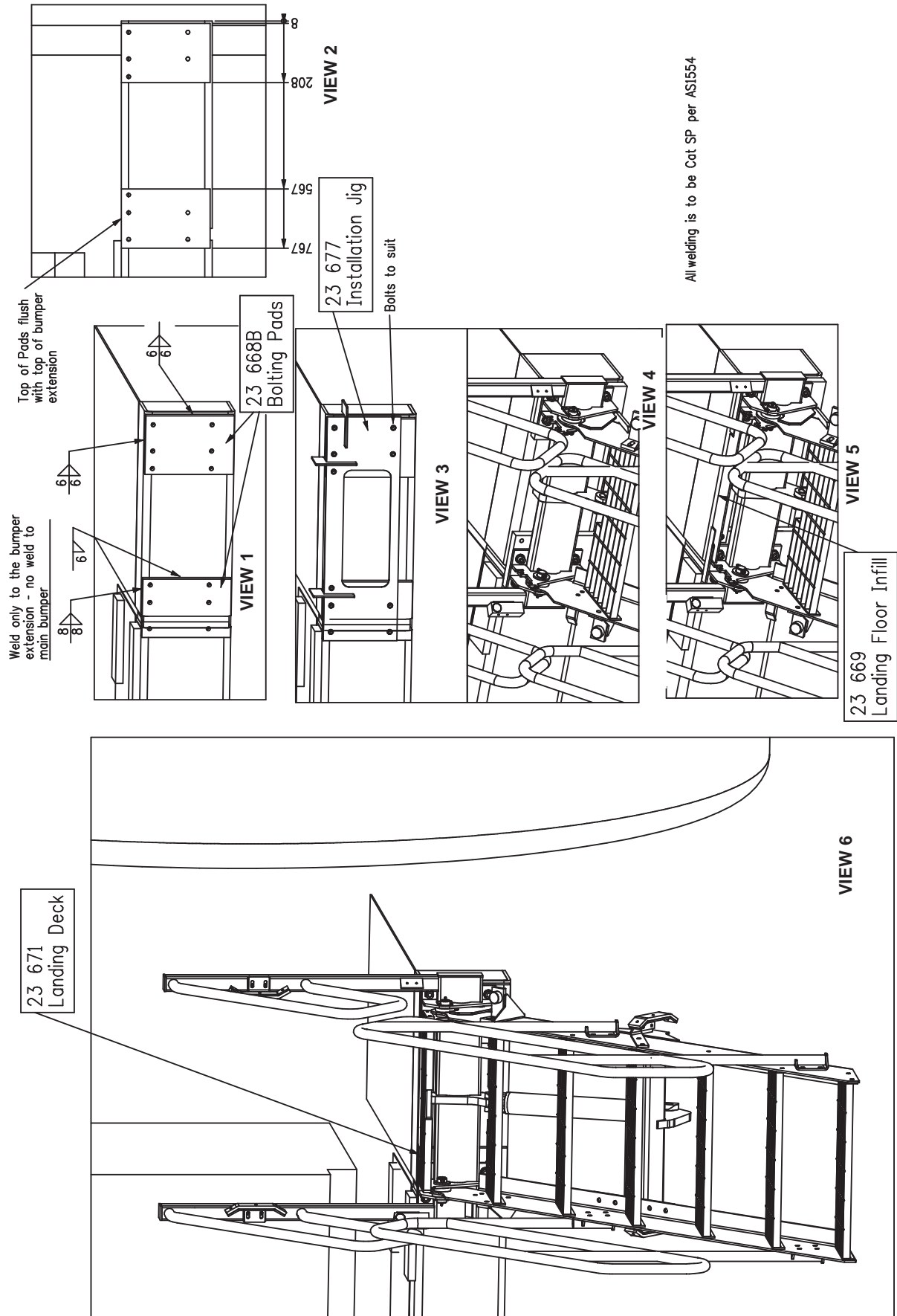


# FOLDING STAIRWAY

## Komatsu 930E Truck



### Section 1. Mounting and Installation 23636



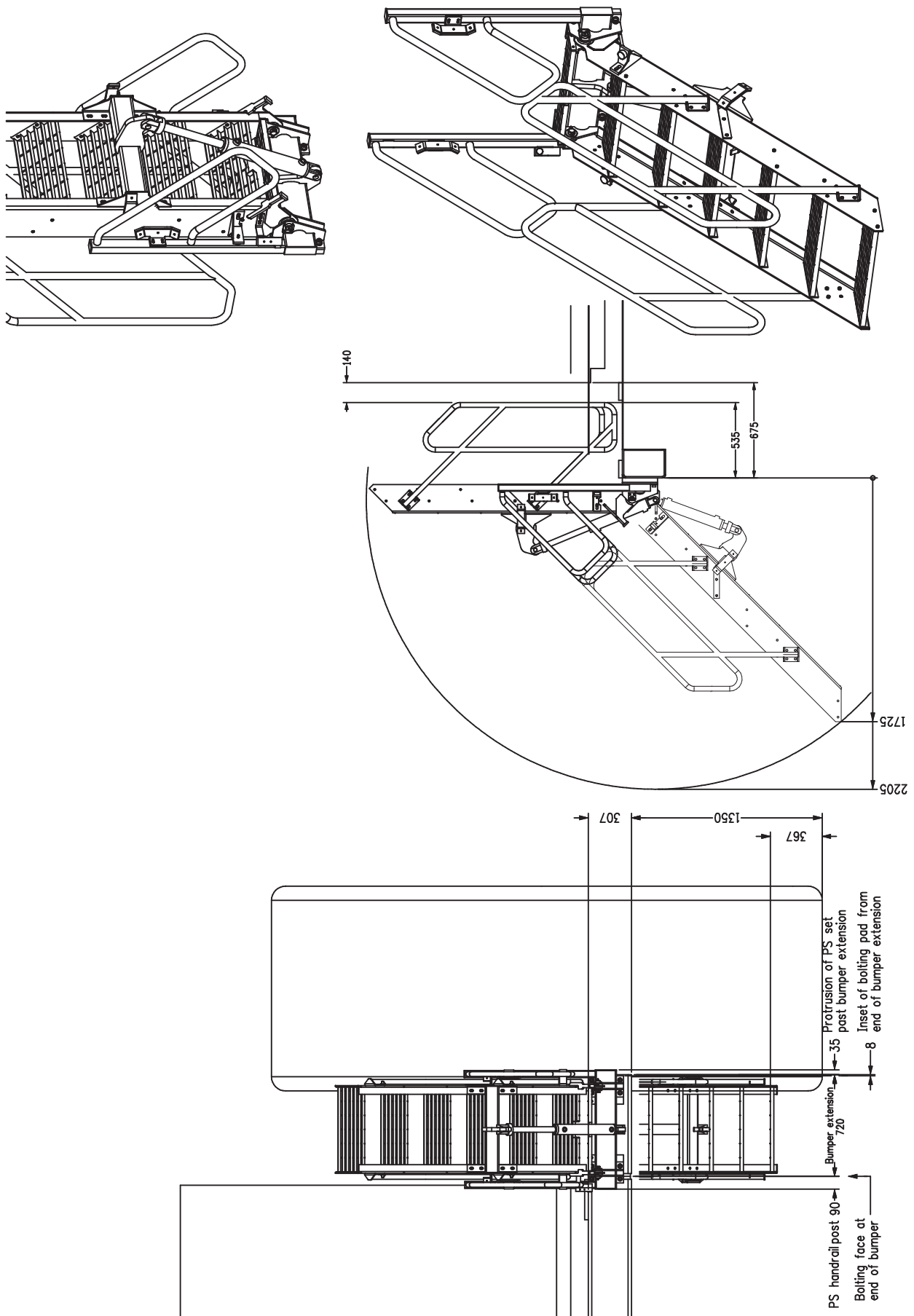


# FOLDING STAIRWAY

## Komatsu 930E Truck



### Section 1. Mounting and Installation (Dimensions) 23678





# FOLDING STAIRWAY

## Komatsu 930E Truck



### Section 2. Electrical Installation

#### Procedure

Remove centre console panel in cabin -

- to do this remove six (6) screws and gear selection knob.

Position stairway indicator panel on centre console, above hour meter.

- drill two mounting screw holes (6mm or 7/32")
- one electrical cable hole (12mm or 15/32")
- do not re-fix console Panel

Remove four (4) screws holding Komatsu fuse panel behind operator's seat. Drill one hole to insert Caterpillar fuse holder - fit fuse holder, into fuse indicator panel - tighten. Drill size (12mm or 15/32").

Remove rear access panel from back of cabin and run short conduit through the main cable gland to inside centre console, ensuring conduit goes underneath control box.

Connect blue wire start from conduit above to blue wire of cabin indicator panel harness.

In rear access, connect black wire, with 10mm eye terminal to machine ground, and blue wire to outer terminal of newly inserted fuse holder.

Install short blue wire to screw terminal of Komatsu circuit breaker, and other end to fuse holder.

Run wiring harness from Power Step Folding Stairway magnetic proximity switch around under radiator, and follow cabling/hose routing up to air line/ electrical outlet on rear Right Hand Side of cabin.

Drill hole in RH Cabin access panel - route wiring harness in through access panel, and through to under centre console - connect wires appropriately as colour coded. Hole saw/drill size (24mm), cable tie harness as appropriate, approximately every 300mm.



# FOLDING STAIRWAY

## Komatsu 930E Truck



### Section 3. Operating Procedure

#### To Lower Stair

- Position truck in a leveled, safe area (whenever possible).
- Ensure that the area below is clear of obstacles and people.
- Apply the park brake.
- Once park brake is applied, the stair will deploy.
- If the truck is parked in uneven ground, the bottom of the stair may touch the ground before the stair is in a fully lowered position; should this occur, descend the stair with caution.

#### To Raise the Stair

- Ascend the stair.
- Ensure area around the stair is clear of people.
- Release the park brake; and the stair will rise and stow into a vertical position.
- Note that the stair does have a pressure valve that senses if someone is standing on the stair at time of rising; and it will automatically stop; or would not rise at all.



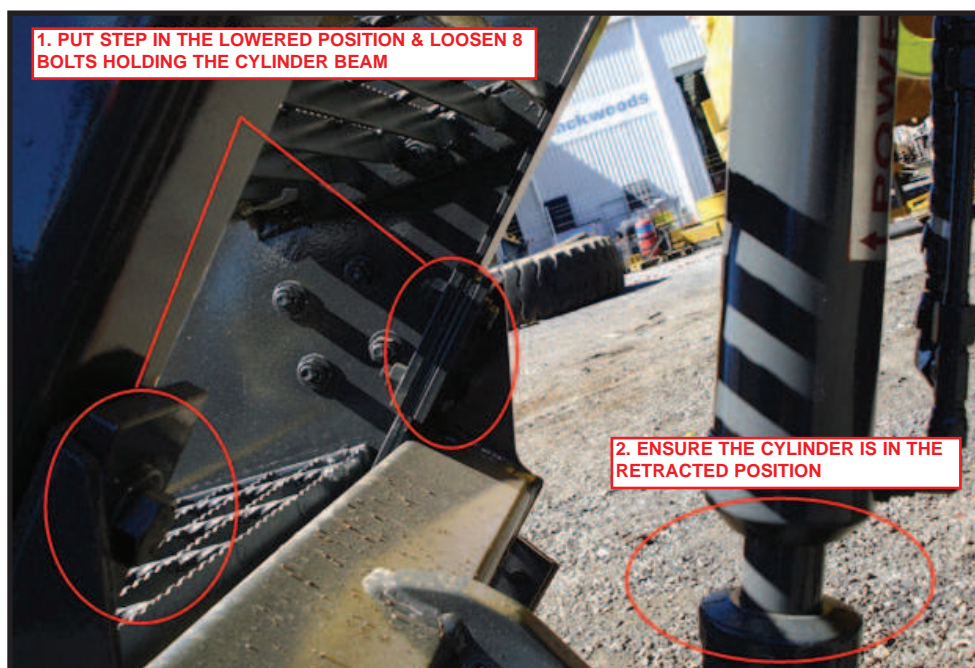
# FOLDING STAIRWAY

## Komatsu 930E Truck



### Section 3. Operating Procedure - Notes

#### Mechanical Adjustment





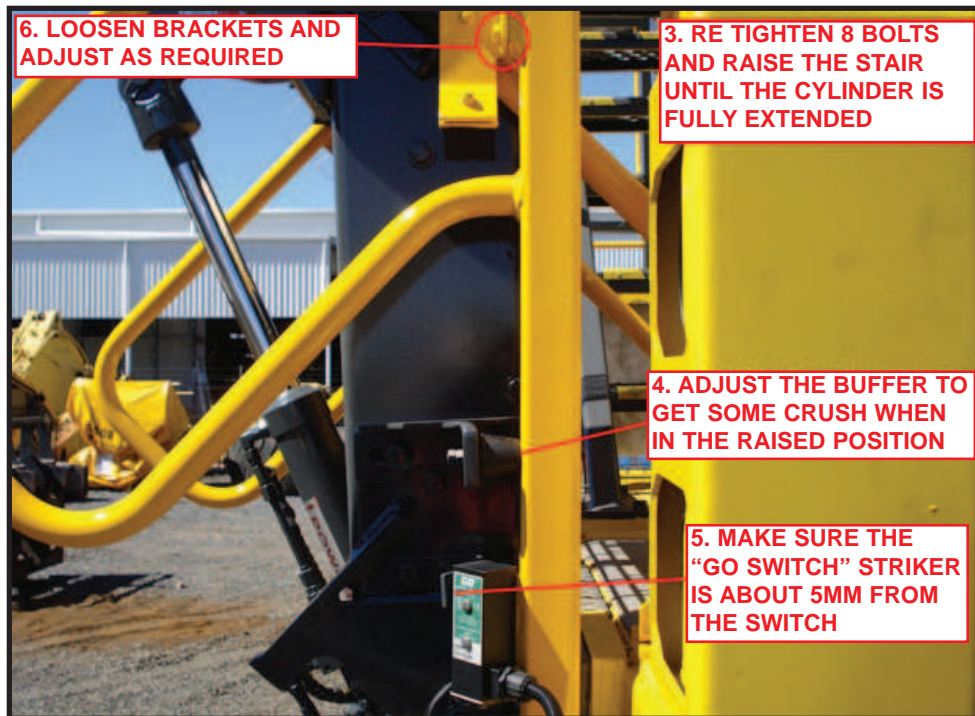
# FOLDING STAIRWAY

## Komatsu 930E Truck

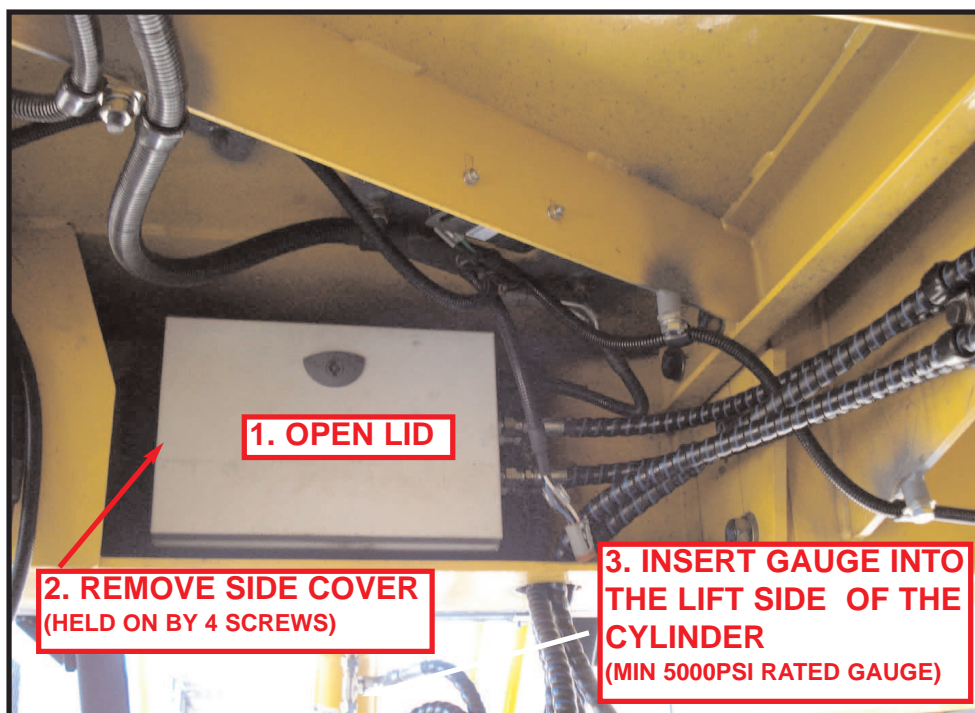


### Section 3. Operating Procedure- Notes

#### Mechanical Adjustment



#### Hydraulic Adjustment





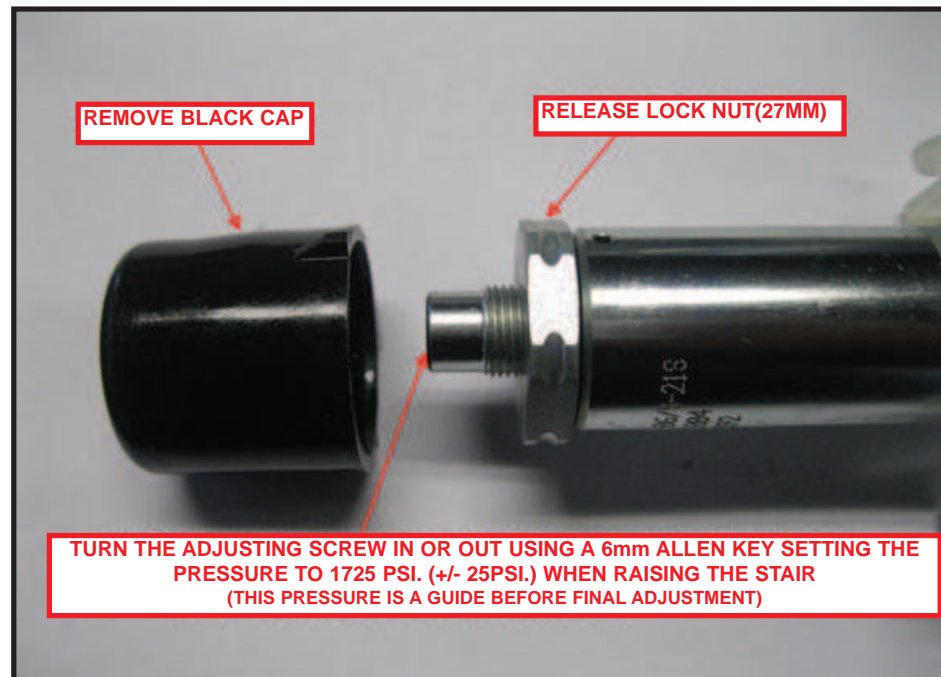
# FOLDING STAIRWAY

## Komatsu 930E Truck



### Section 3. Operating Procedure- Notes

#### Hydraulic Adjustment



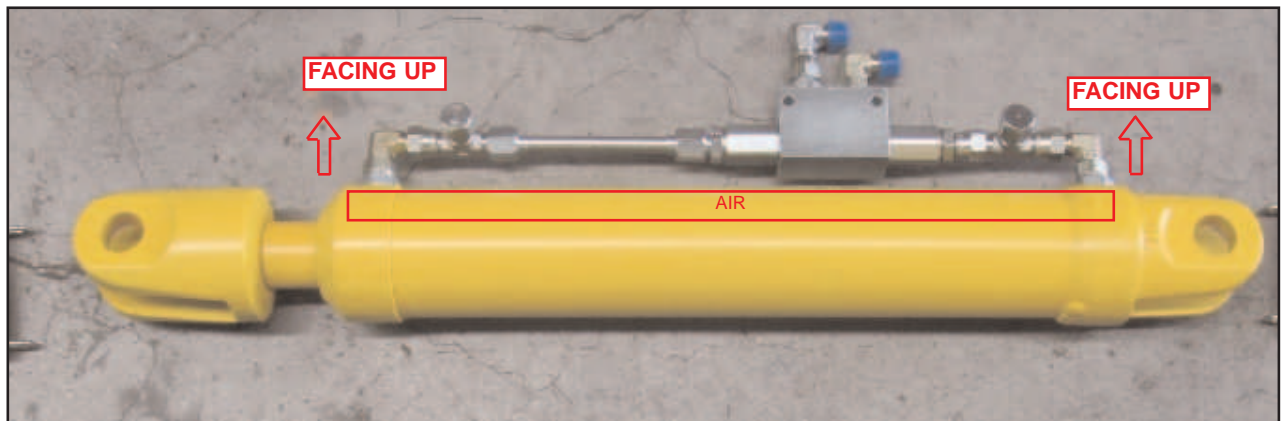


### Section 3. Operating Procedure- Notes

#### To Bleed a Cylinder

1. Lower the stair.
2. Remove the Cylinder with hoses attached.
3. Turn the Cylinder over so the Hydraulic hoses are on top of the cylinder. This is also puts any air in the Cylinder on top.

ANY AIR IN THE CYLINDER WILL MOVE TO THE TOP WHEN HELD WITH THE FITTINGS FACING UPWARDS



4. Ensure Power Pack Hydraulic oil reservoir is full of oil.
5. Hold the Cylinder level, hoses and Lock Valve on top, and cycle(operate) cylinder several times.
6. Finally when retracting the rod,hold the "Cylinder end" higher and than the "Rod end" and close the Cylinder.
7. Then hold the Cylinder so the "Rod end" is higher and fully extend the Cylinder.
8. Repeat Step (6) above.
9. All air should now be out of cylinder.
10. Turn cylinder over and refit to the stair.
11. Ensure the Power Pack tank is full of oil. There should be no more problems.

#### **NOTE:**

If a problem persists, it may be required to remove the Cylinder hard plumbing and bleed the Cylinder first. Also join the hoses from the PowerPack together and cycle them to ensure there is no air.





### Section 4. Recommended Maintenance Procedure

#### Daily

Visually check stairway and structure for damage, loose components, handrails, etc.

Check for any back and forth motion when the Stair is stowed.  
Adjustments may be required.

Check for hydraulic oil leaks from Hydraulic Cylinders, Plumbing and Hoses.

Notify the appropriate supervisor for any observed damage or malfunction.

\* See attached Mechanical and Hydraulic adjustment & Cylinder bleeding procedures if required.

#### 500 Hours

- Grease on regular service.
- Check daily service as above.
- Check the Cylinder Clevis's & Pins etc. for wear.
- Check all Rubber Buffers for damage or wear (Replace where required)
- Re-adjust all Mechanical & Hydraulic parts as per the "Mechanical & Hydraulic adjustment procedure"

**NOTE:** If the Cylinder has been removed or the Emergency Valve used, the Cylinder will require bleeding as per the "Cylinder bleeding procedure" (Pg 12)



# FOLDING STAIRWAY

## Komatsu 930E Truck



### Section 5. Assembly Complete - Main Assemblies

See Pg 15

| Item | Part No.     | Part Name  | Qty |  |  |
|------|--------------|--|-----|--|--|
| 1    | PSA-K930E-FS | ASSEMBLY COMPLETE  | 1   |  |  |
| 2    | PS-30 002-A  | LANDING ASSEMBLY<br>(INC.HANDRAILS)<br>REFER TO 4-2 FOR DETAILS        | 1   |  |  |
| 3    | PS-30 020-A  | FOLDING STAIRS ASSEMBLY<br>(INC.HANDRAILS)<br>REFER TO 4-3 FOR DETAILS | 1   |  |  |
| 4    | PS-62999-AH  | HYDRAULIC CYLINDER<br>REFER TO 4-4 FOR DETAILS                         | 1   |  |  |
| 5    | PS-960E-PBVC | ELECTRICAL CABINET ASSEMBLY  | 1   |  |  |



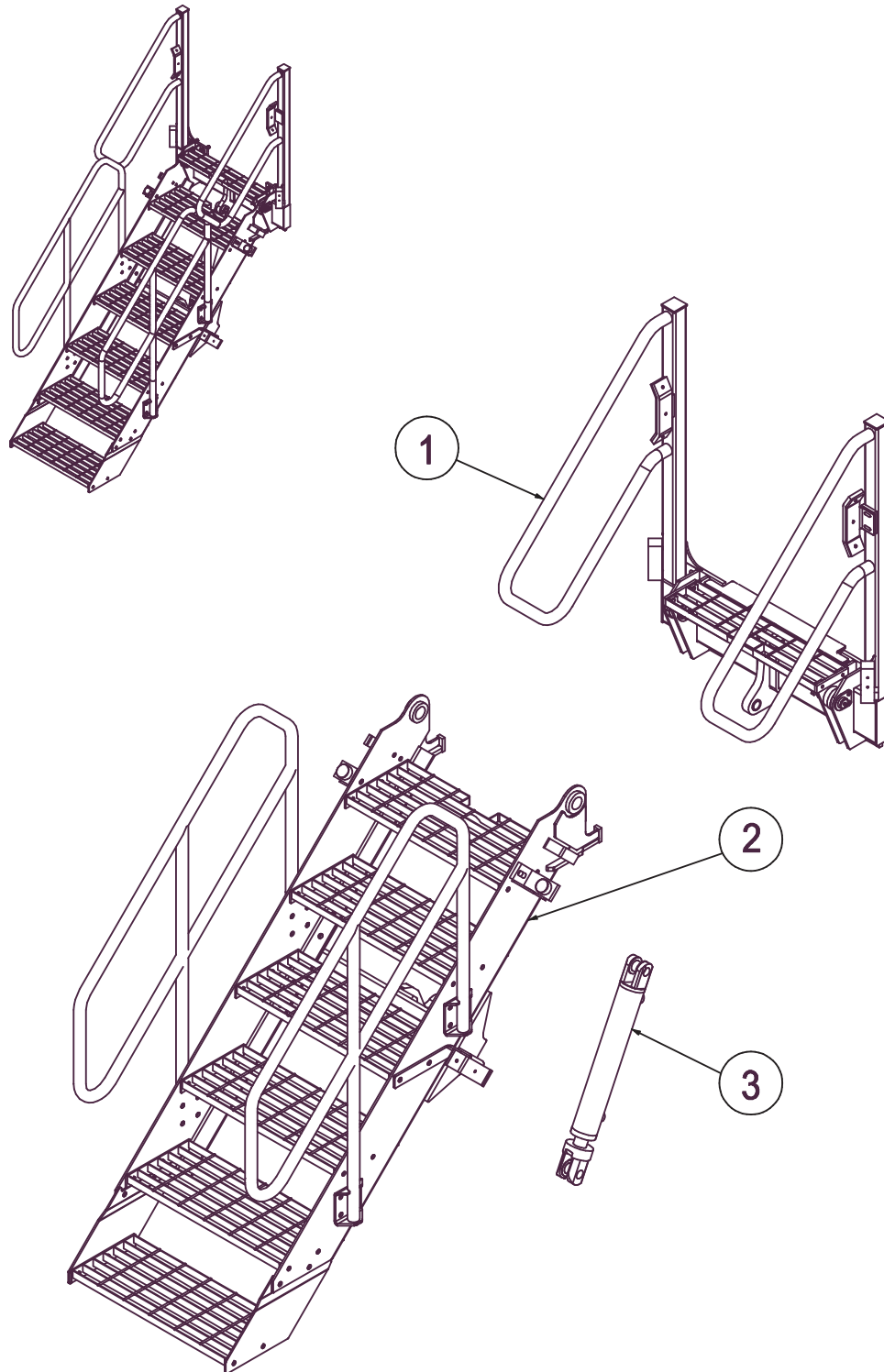
# FOLDING STAIRWAY

Komatsu 930E Truck

Hydraulic Operation



## Section 5-1 Assembly Complete PSA-K930E-FS



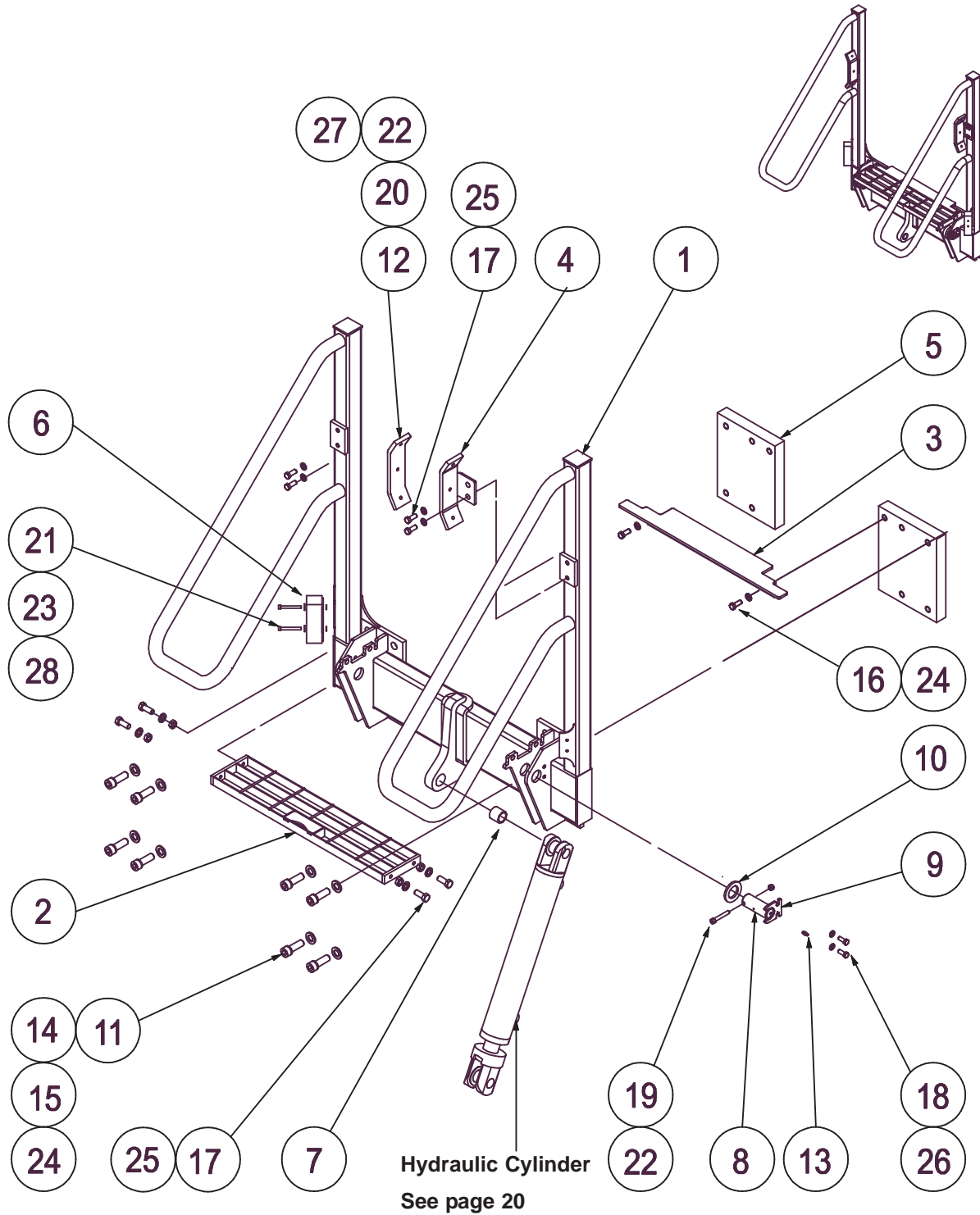


# FOLDING STAIRWAY

## Komatsu 930E Truck



### Section 5-2 Landing Assembly PS 30 002-A





# FOLDING STAIRWAY

## Komatsu 930E Truck



### Section 5-2 Landing Assembly PS 30 002-A

#### Parts List

See Drawing Pg 16

The Landing Assembly includes Items 1, 2, 3, 4, 8, 9, 10, 11, 12, 13, 14, 15, 16, 17, 18, 19, 20, 24, 25.

| Item | Part No.     | Part Name                  | Qty |  |  |
|------|--------------|----------------------------|-----|--|--|
| 1    | PS-30-002    | LANDING FRAME-BASE         | 1   |  |  |
| 2    | PS-30-001    | LANDING DECK-STEP TREAD    | 1   |  |  |
| 3    | PS-30-042    | LANDING FLOOR INFILL       | 1   |  |  |
| 4    | PS-30-021-01 | HANDRAIL BUMPER            | 2   |  |  |
| 5    | PS-23668     | MAIN MOUNTING BLOCKS       | 2   |  |  |
| 6    | PS-75430     | GO- SWITCH                 | 1   |  |  |
| 7    | PS-30-008-02 | BUSH-(Ertalon)             | 2   |  |  |
| 8    | PS-30-009-01 | STAIR HINGE PIN            | 2   |  |  |
| 9    | PS-30-009-02 | HEAD PLATE                 | 2   |  |  |
| 10   | PS-30-009-03 | WASHER-(Dia 55)            | 2   |  |  |
| 11   | PS-23679     | SPECIAL WASHER(M16 Mod.)   | 8   |  |  |
| 12   | PS-30-021-02 | HANDRAIL BUMPER LINER      | 2   |  |  |
| 13   | PS-61006-2   | GREASE NIPPLE-M6 Str.      | 2   |  |  |
| 14   | CPS-M16X35ZP | BOLT-M16 X 35 Bolt         | 6   |  |  |
| 15   | CPS-M16X35ZP | BOLT-M16 X 35 Socket head  | 2   |  |  |
| 16   | CPS-M16X30ZP | BOLT-M16 x 30 (For infill) | 2   |  |  |
| 17   | CPS-M10X30ZP | BOLT-M10 x 30 Socket head  | 6   |  |  |
| 18   | CPS-M8X16ZP  | BOLT-M8 x 16               | 4   |  |  |
| 19   | CPS-M6X50ZP  | BOLT- M6 x 50 Socket head  | 2   |  |  |
| 20   | CPS-M6X20ZP  | BOLT-M6 x 20 Pan Head      | 6   |  |  |
| 21   | CPS-M5 X 50  | BOLT M5 x 50 - (Go Switch) | 4   |  |  |
| 22   | CPS-M6NN     | NUT-NYLOC-M6               | 8   |  |  |
| 23   | CPS-M5 NN    | NUT - NYLOC M5             | 4   |  |  |
| 24   | CPS-M16WH    | WASHER - HARDENED - M16    | 6   |  |  |
| 25   | CPS-M10WH    | WASHER - HARDENED - M10    | 6   |  |  |
| 26   | CPS-M8WH     | WASHER - HARDENED - M8     | 4   |  |  |
| 27   | CPS-M6WH     | WASHER - HARDENED - M6     | 8   |  |  |
| 28   | CPS-M5WH     | FLAT WASHER- M5            | 8   |  |  |

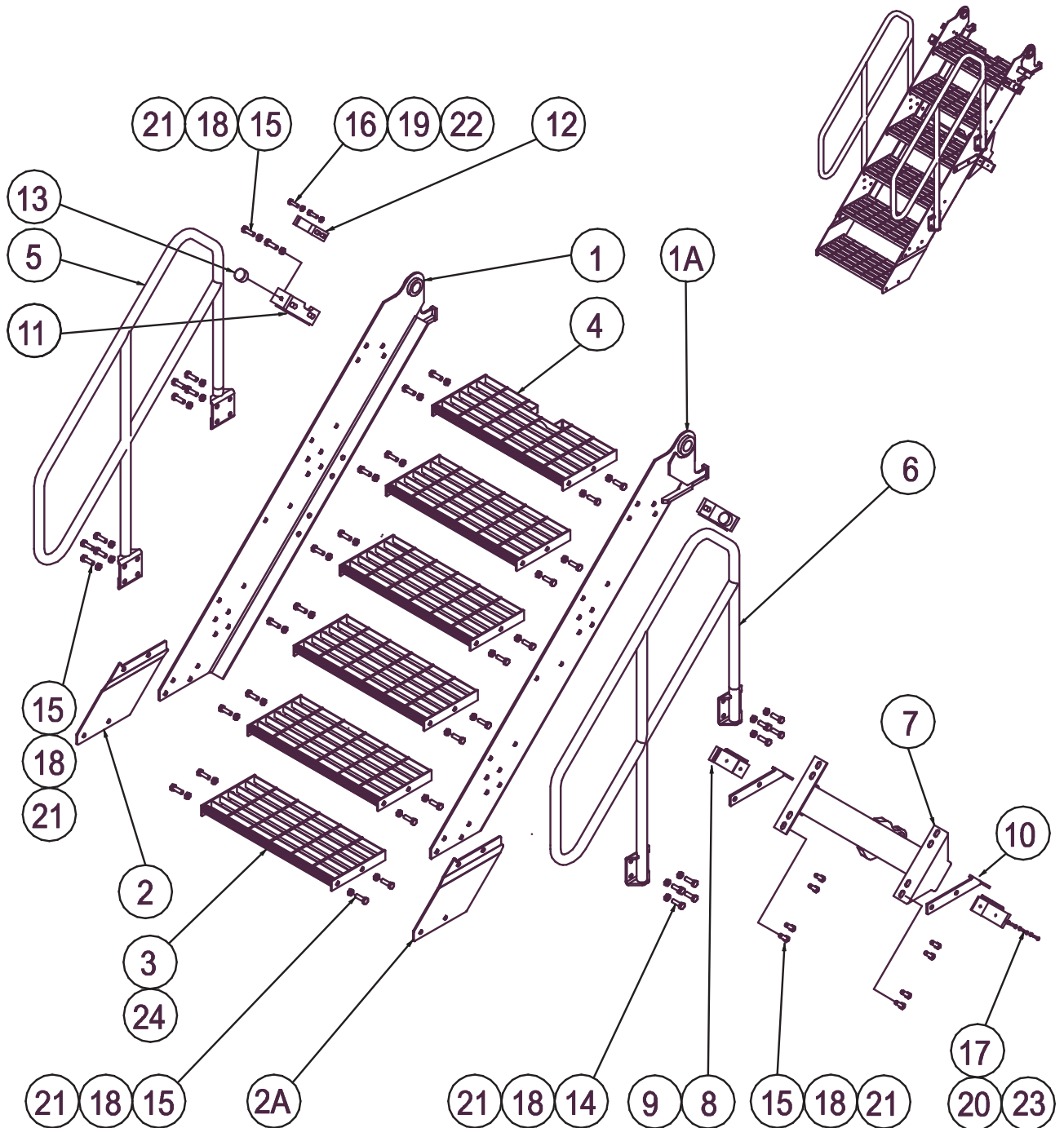


# FOLDING STAIRWAY

## Komatsu 930E Truck



### Section 5-3 Stair Assembly PS-30020-A





# FOLDING STAIRWAY

## Komatsu 930E Truck



### Section 5-3 Stair Assembly PS-300020-A

#### Parts List

See Drawing Page 18

The Stair Assembly includes Items 1, 1A, 2, 2A, 3, 4, 5, 6, 7, 8, 9, 10, 11, 12, 13, 14, 15, 16, 18, 19, 21, 22, 23, 24.

| Item | Part No.         | Part Name                           | Qty |  |  |
|------|------------------|-------------------------------------|-----|--|--|
| 1    | PS-30-019 F      | STAIR STILES FABRICATION-FRONT      | 1   |  |  |
| 1A   | PS-30-019 R      | STAIR STILES FABRICATION-REAR       | 1   |  |  |
| 2    | PS-30-018 F      | STAIR EXTENSION-FRONT               | 1   |  |  |
| 2A   | PS-30-018 R      | STAIR EXTENSION-REAR                | 1   |  |  |
| 3    | PS-30-014        | STAIR TREADS                        | 5   |  |  |
| 4    | PS-30-015        | STAIR TREAD (Modified)              | 1   |  |  |
| 5    | PS-30-016-98     | HANDRAIL-FRONT                      | 1   |  |  |
| 6    | PS-30-016-99     | HANDRAIL-REAR                       | 1   |  |  |
| 7    | PS-30-006        | STAIR ACTUATOR ATTACHMENT           | 1   |  |  |
| 8    | PS-30-021-01     | HANDRAIL BUMPER (Matched Pair)      | 2   |  |  |
| 9    | PS-30-021-02     | HANDRAIL BUMPER LINER               | 2   |  |  |
| 10   | PS-30-011 LH/RH  | HANDRAIL BUMPER MOUNTING(pair)      | 2   |  |  |
| 11   | PS-30-012 LH/RH  | STAIR BUFFER BRACKET (Matched Pair) | 2   |  |  |
| 12   | PS-30-010        | GO SWITCH TRIGGER                   | 2   |  |  |
| 13   | PS-40002         | RUBBER STOP                         | 2   |  |  |
| 14   | CPS-M12X40ZP     | BOLT-M12 x 40                       | 16  |  |  |
| 15   | CPS-M12X30ZP     | BOLT-M12 x 30                       | 46  |  |  |
| 16   | CPS-M10X30ZP     | BOLT-M10 x 30                       | 4   |  |  |
| 17   | CPS-M6X20ZP      | BOLT-M6 x 20 Pan Head               | 6   |  |  |
| 18   | CPS-M12NZP       | NUT-M12                             | 72  |  |  |
| 19   | CPS-M10NZP       | NUT-M10                             | 4   |  |  |
| 20   | CPS-M6NZP        | NUT-M6                              | 6   |  |  |
| 21   | CPS-M12WH        | WASHER-HARDENED-M12                 | 72  |  |  |
| 22   | CPS-M10WH        | WASHER-HARDENED-M10                 | 8   |  |  |
| 23   | CPS-M6WH         | WASHER-HARDENED-M6                  | 6   |  |  |
| 24   | PS-32266-SAN-580 | NON SLIP NOSING                     | 6   |  |  |

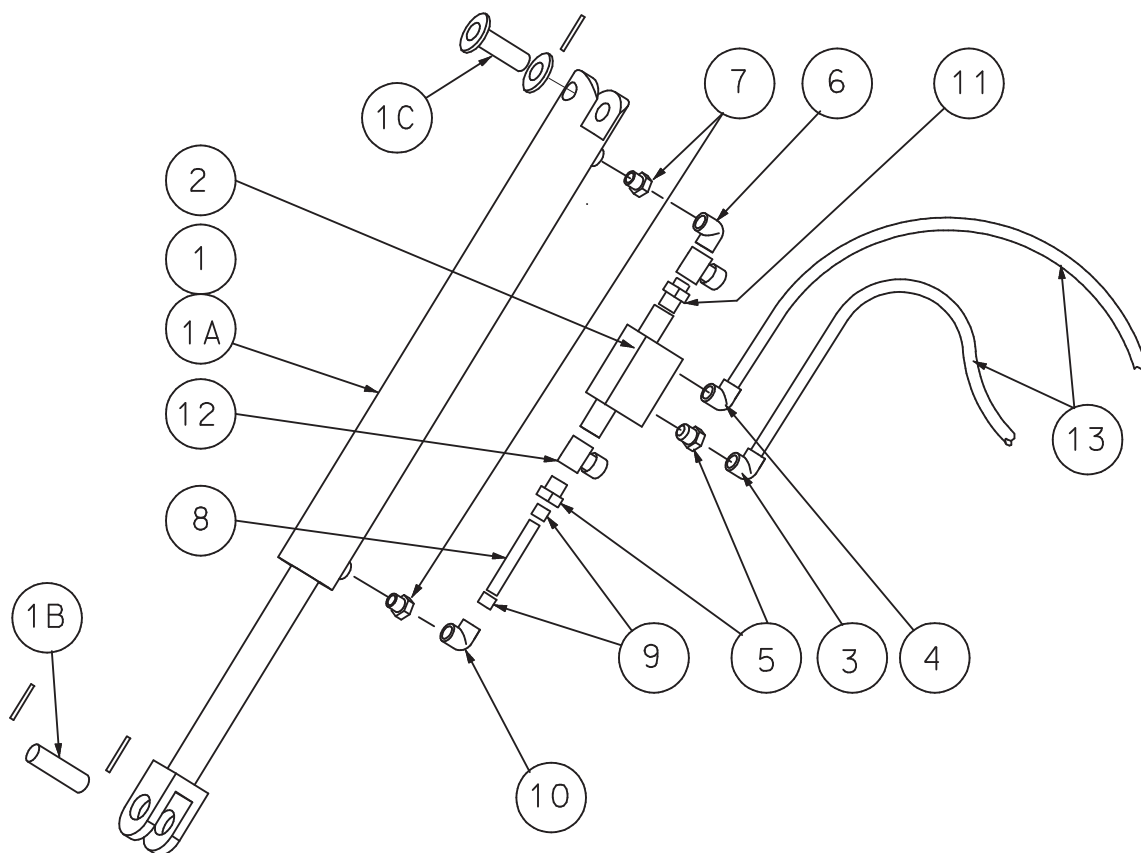


# FOLDING STAIRWAY

## Komatsu 930E Truck



### Section 5-4 Hydraulics -Cylinder Assembly P/No. PS-62999-AH-930E-MH



**NOTE:** HYDRAULIC CYLINDER ASSEMBLY P/No PS- 62999-AH-930E-MH includes Part No.s 1 to 12

| Item | Part No.            | Part Name                                 | Qty |  |          |
|------|---------------------|---|-----|--|----------|
| 1    | PS-62999-AH-930E-MH | HYDRAULIC CYL. (with hard plumbing )      | 1   |  |          |
|      | PS-62999-HPK-930E   | HARD PLUMBING KIT                         | 1   |  |          |
| 1A   | PS-62999-A          | HYDRAULIC CYLINDER 2 1/2"                 | 1   |  |          |
| 1B   | PS-62999-P          | PIN - CYLINDER & RETAINING CLIPS          | 1   |  |          |
| 1C   | PS-63009-P          | PIN - LUBRICATED (Incl.Nipple & Splt Pin) | 1   |  |          |
| 1S   | PS-63103            | SEAL KIT (Not shown)                      | 1   |  |          |
| 2    | PS-63201            | VALVE - PILOT OPERATED LOCKING            | 1   |  |          |
| 3    | PS-61159            | FITTING - ELBOW-9/16" JIC                 | 1   |  |          |
| 4    | PS-61158 - 1mm      | FITTING                                   | 1   |  |          |
| 5    | PS-61157            | FITTING - O RING 1/4BSPPx 9/16" JIC       | 2   |  |          |
| 6    | PS-61154            | FITTING                                   | 1   |  | CYL. END |
| 7    | PS61163             | REDUCER JIC x BSPP                        | 2   |  |          |
| 8    | PS-61160            | TUBE (Cut to suit) 110mm                  | 1   |  |          |
| 9    | PS-61147            | FERRULES                                  | 2   |  |          |
| 10   | PS-61154            | FITTING                                   | 1   |  | ROD END  |
| 11   | PS-61145            | FITTING- 9/6" JIC SWIVEL                  | 1   |  |          |
| 12   | PS-61183            | TEE FITTING                               | 2   |  |          |
| 13   | -                   | HYD.HOSES (Supplied by Komatsu Aust.)     | 2   |  |          |



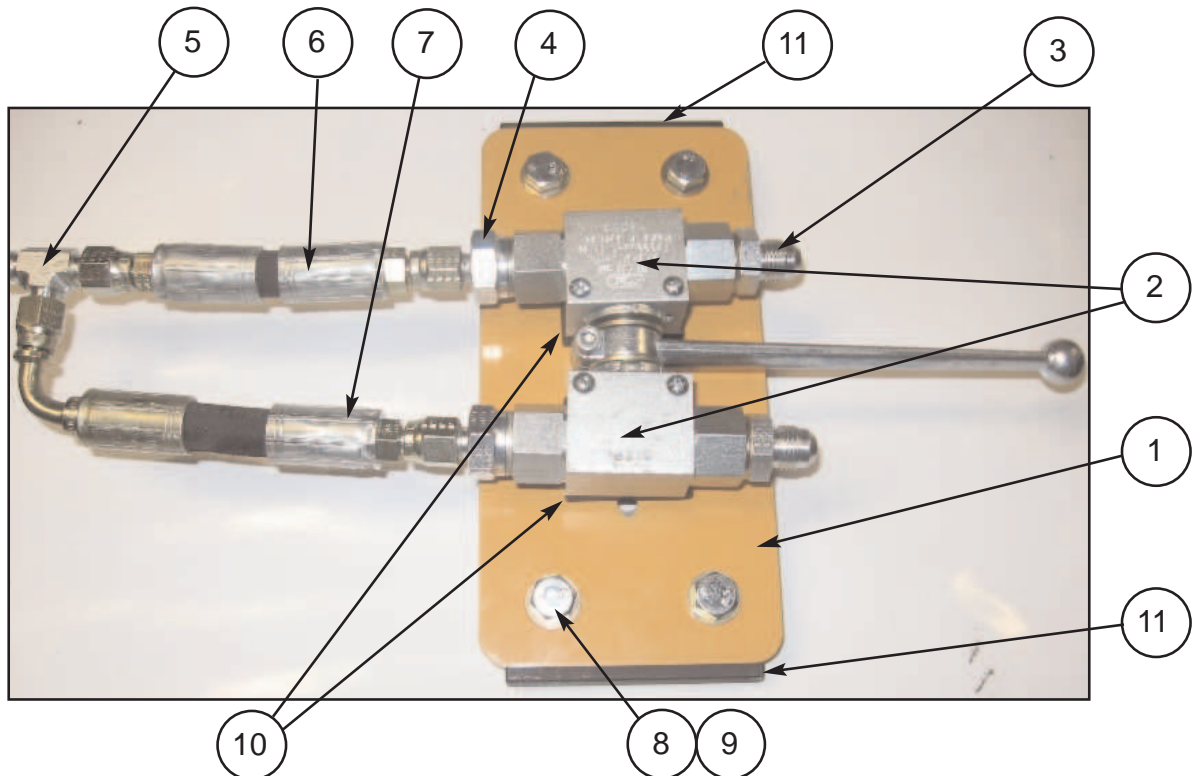
# FOLDING STAIRWAY

## Komatsu 930E Truck



### Section 5-4 Hydraulics Cylinder and Components

EMERGENCY VALVE (CYLINDER) PS-63203A Auto build as below



| Item | Part No.        | Part Name  | Qty |  |
|------|-----------------|--|-----|--|
| 1    | PS-73013-HEV    | HYDRAULIC EMERGENCY VALVE PLATE                        | 1   |  |
| 2    | PS-63203        | 1/4" BALL VALVE  | 2   |  |
| 3    | PS-61157        | FITTING-STRAIGHT                                       | 2   |  |
| 4    | PS-61153        | FITTING  | 2   |  |
| 5    | PS-61140        | FITTING-TEE-7/16" JIC                                  | 1   |  |
| 6    | PS-60050-130MM  | Hyd. Hose-130mm (2x7/16" JIC STRAIGHT)                 | 1   |  |
| 7    | PS-60050-145MM  | Hyd. Hose-145mm (1x7/16" JIC Str. & 1x7/16" JIC Elbow) | 1   |  |
| 8    | CPS-M8X20ZP     | BOLT-M8 x 20   | 4   |  |
| 9    | CPS-M8WH        | FLAT WASHER-M8   | 4   |  |
| 10   | PS-63203-MTG-BL | VALVE MOUNTING BLOCKS                                  | 2   |  |
| 11   | PS-63203-BLK    | MOUNTING BLOCKS FOR PLATE ASSEMBLY                     | 2   |  |

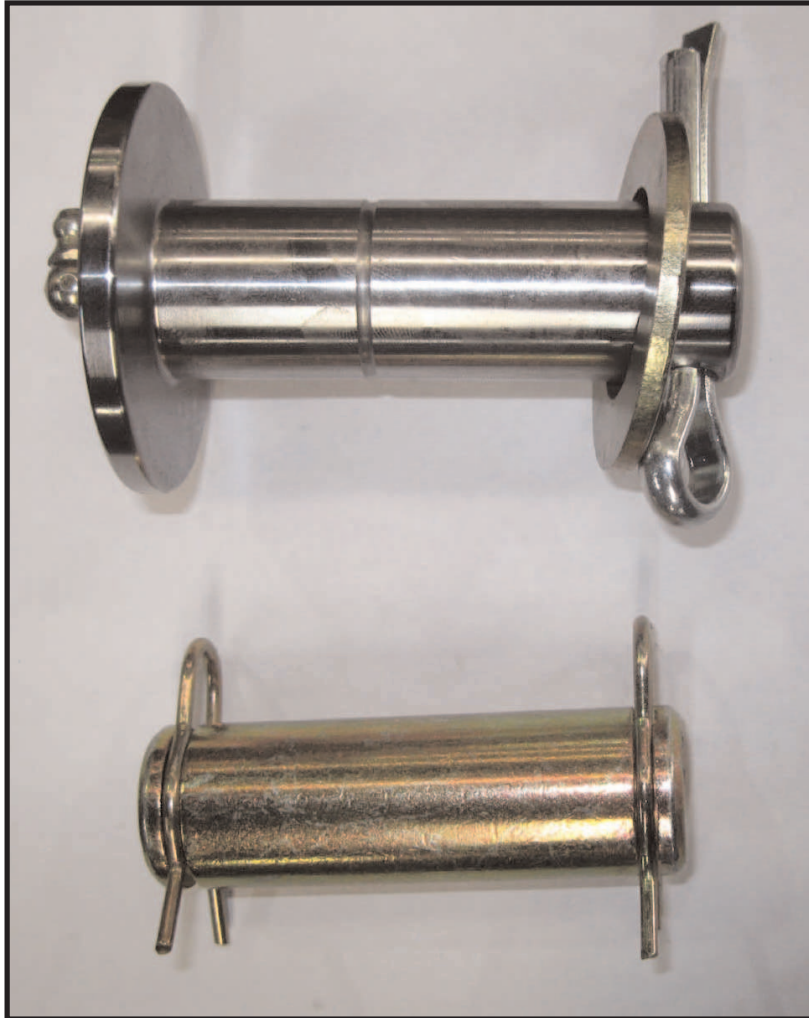


# FOLDING STAIRWAY

## Komatsu 930E Truck



### Section 5-4 Hydraulics Cylinder Pins (See Page 20 Items 1B & 1C)



Cylinder End Pin  
(Lubricated)  
PS-63009-P

Rod End Pin  
PS-62999-P

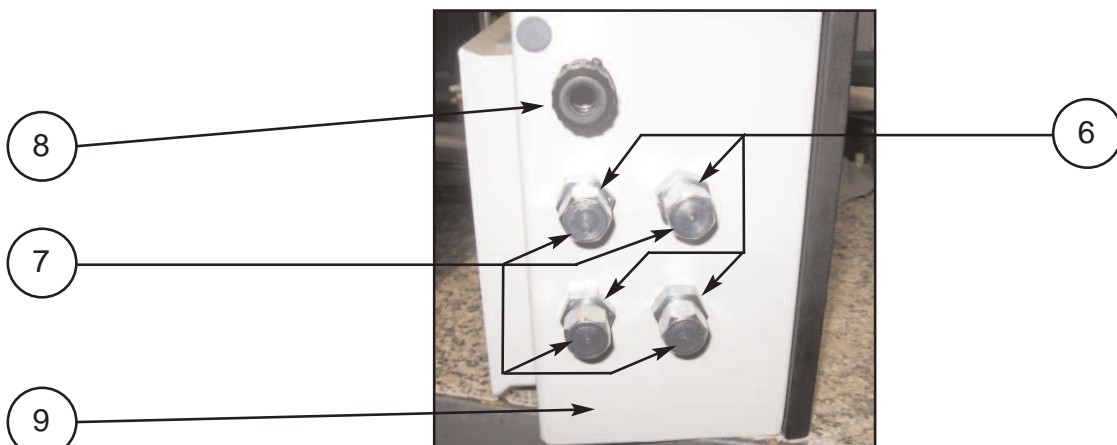
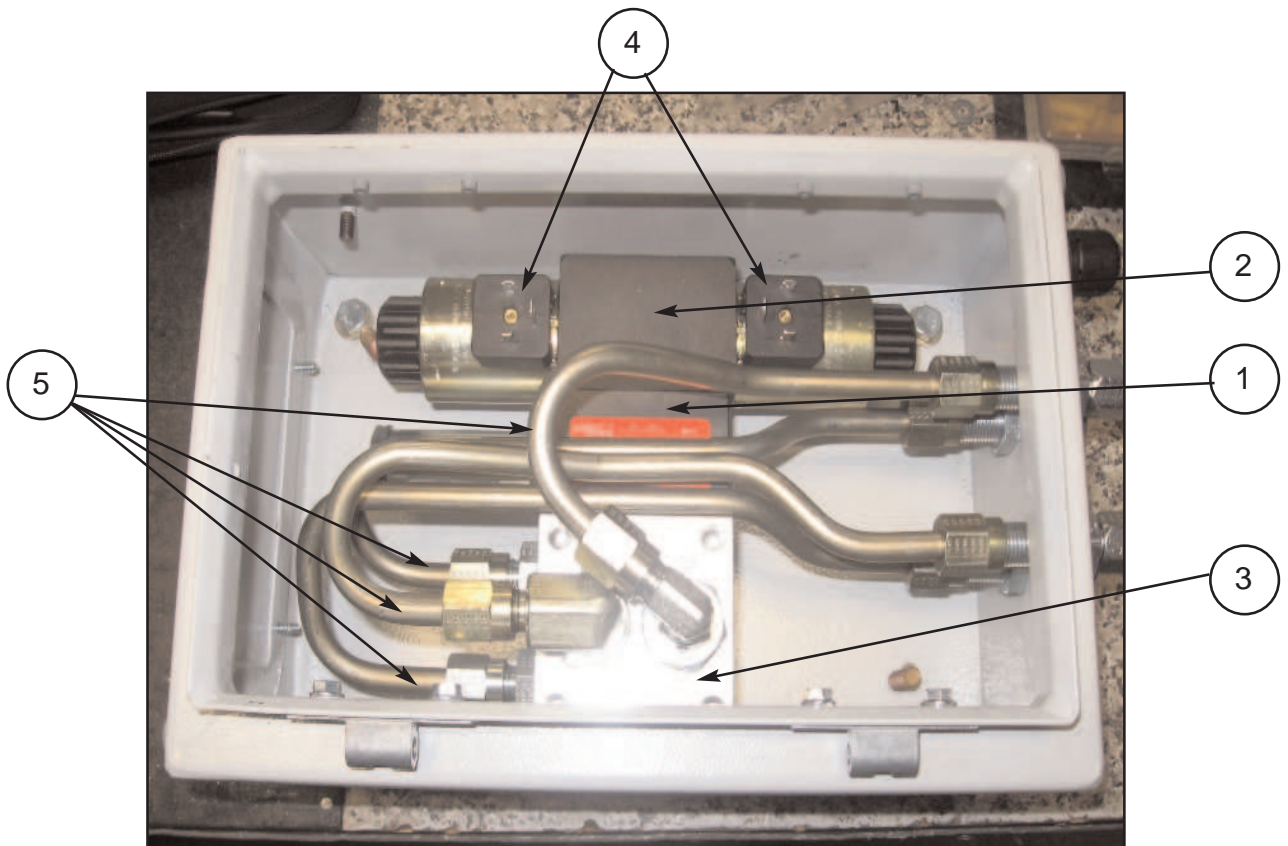


# FOLDING STAIRWAY

## Komatsu 930E Truck



### Section 5-4 Hydraulics Control Box Assembly PS-930E-HCB

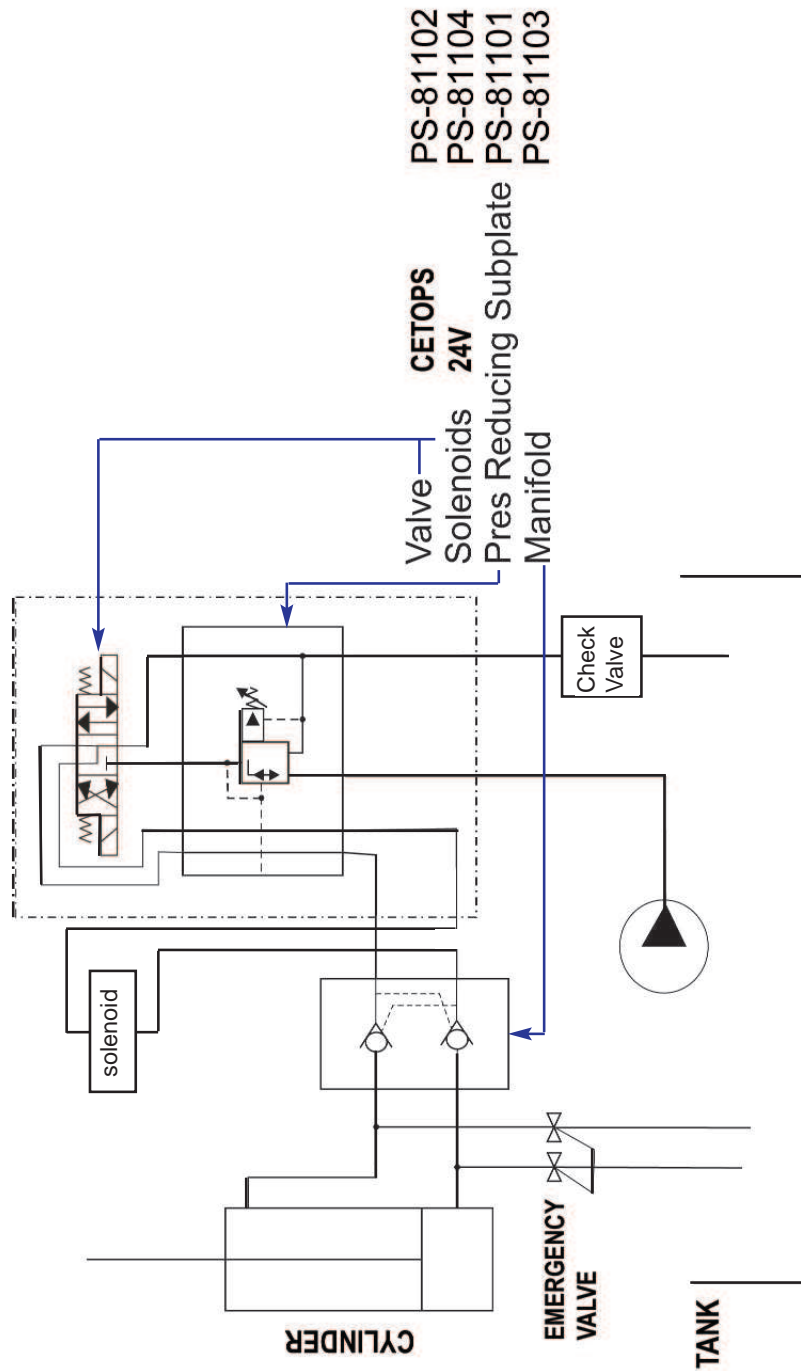


| Item | Part No.      | Part Name                                   | Qty  |     |  |
|------|---------------|---|------|-----|--|
| 1    | PS-81101      | PRESSURE REDUCER                            | 1    |     |  |
| 2    | PS-81102      | CETOP3 DCV-NO COILS                         | 1    |     |  |
| 3    | PS-81103      | STATION MANIFOLD                            | 1    |     |  |
| 4    | PS-81104      | COILS-24V                                   | 2    |     |  |
| 5    | PS-61160-930E | ST. TUBING & FLARED FITTINGS (Made to suit) | 1SET | (4) |  |
| 6    | PS-61177      | BULKHEAD FITTINGS                           | 4    |     |  |
| 7    | PS-61143      | CAP   | 4    |     |  |
| 8    | PS-CAB12M20   | ELECTRICAL GLAND                            | 1    |     |  |
| 9    | PS-ST2315     | BOX ASSEMBLY & KEY                          | 4    |     |  |



### Section 5-4 Hydraulics Valve Diagram

#### Access Ladder Circuit- Komatsu KOM-930E



| TITLE                      |     |          |             |
|----------------------------|-----|----------|-------------|
| Power Step (Australia) P/I |     |          |             |
| Komatsu                    |     |          |             |
| Hydraulic Diagram          |     |          |             |
| Drawn                      | DC  | Date     | Checked     |
| Scale                      | NTS | 28/10/09 | Dwg. Number |

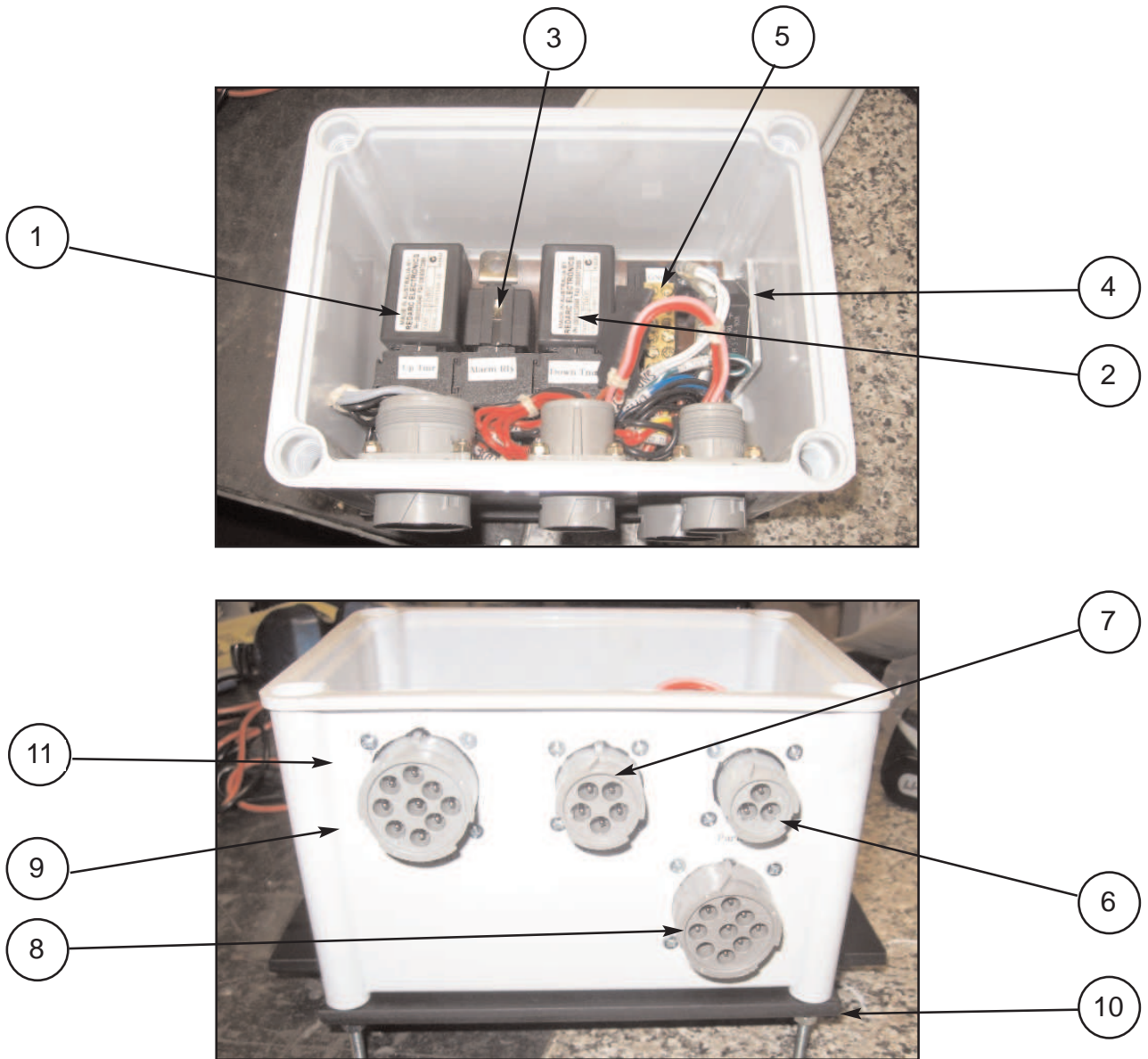


# FOLDING STAIRWAY

## Komatsu 930E Truck



### Section 5-5 Electrical Cabinet Assembly PS-960E-PBVC



| Item | Part No.      | Part Name                      | Qty |     |  |
|------|---------------|--------------------------------|-----|-----|--|
| 1    | PS-TMR05      | UP-TIMER - Set 20-22 Seconds   | 1   |     |  |
| 2    | PS-TMR05      | DOWN TIMER - Set 20-22 Seconds | 1   |     |  |
| 3    | PS-82418      | ALARM RELAY BEACON & HORN      | 1   |     |  |
| 4    | PS-84219      | BRIDGE RECTIFIER 40A           | 1   |     |  |
| 5    | PS-84216      | GROUND BUS BAR/LINK            | 1   |     |  |
| 6    | PS-HD10-3-96P | 3 PIN PLUG                     | 1   |     |  |
| 7    | PS-HD10-5-16P | 5 PIN PLUG                     | 1   |     |  |
| 8    | PS-HD10-9-16P | 9 PIN PLUG                     | 2   |     |  |
| 9    | PS-HD10-9-96  | 9 PIN PLUG                     | 1   |     |  |
| 10   | PS-960E-EC-PL | MOUNTING PLATE KIT             | 1   | set |  |
| 11   | PS-960E-PB    | BOX ONLY (Empty)               | 1   |     |  |



# FOLDING STAIRWAY

Komatsu 930E Truck



## Section 5-5 Electrical System Sheet 1 of 3

### NOTES:

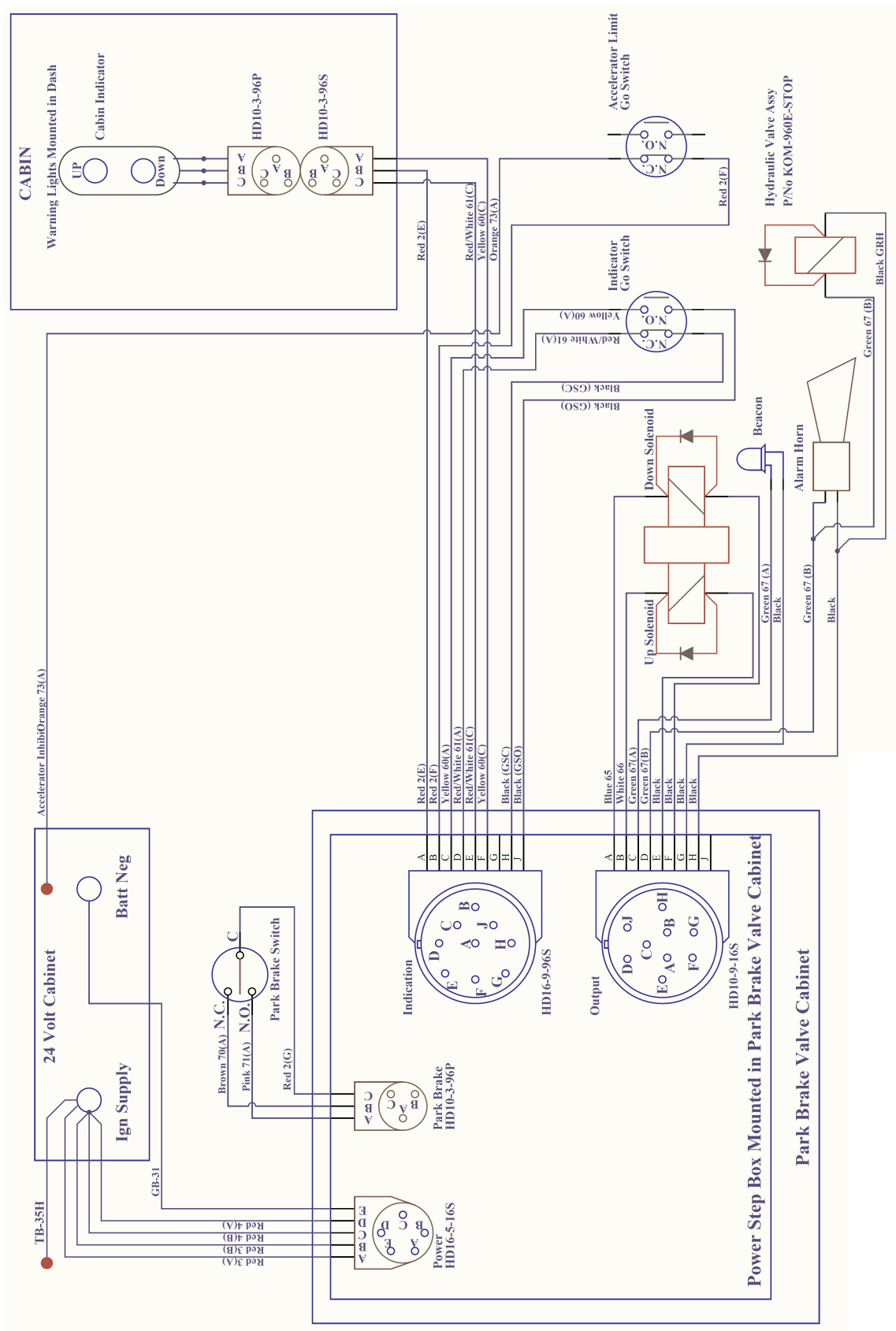
- (1) Switch contacts are shown with the Power Step in the lowered position.
- (2) All coils to be fitted with arc control diodes
- (3) N.C. contacts on Park Brake switch are closed when Park Brake is set.

### WIRING CONNECTIONS:

| Colour | Signal Name                      | Wire No | Length              |
|--------|----------------------------------|---------|---------------------|
| Red    | Ign Supply +ve                   | TB35-H  | :- 12 Metres Length |
| Red    | Ign Supply +ve Park Brake        | 2       |                     |
| Red    | Ign Supply +ve TR Down           | 3(A)    |                     |
| Red    | Ign Supply +ve TR Up             | 3(B)    |                     |
| Red    | Ign Supply +ve IND               | 4(A)    |                     |
| Red    | Ign Supply +ve IND Beacon & Horn | 4(B)    |                     |
| Black  | EARTH                            |         |                     |
|        | TMR Up RLY Sup                   |         |                     |
|        | TMR Dn RLY Sup                   |         |                     |
|        | TMR RLY CTL                      | GB-31   |                     |
|        | Up SOL, Beacon & Horn            |         |                     |
|        | Dn SOL, Beacon & Horn            |         |                     |



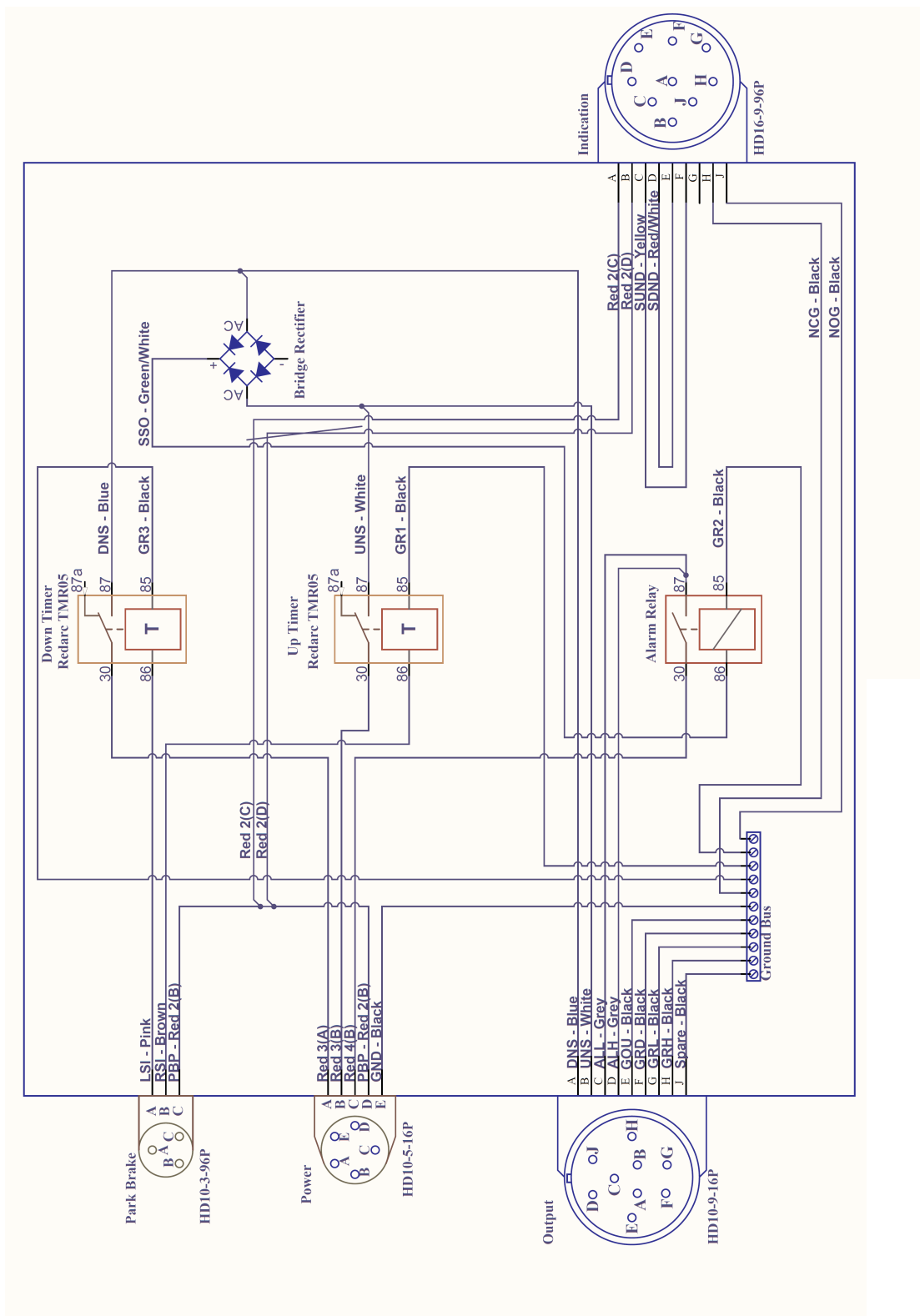
# Komatsu 930E Truck

Section 5-5 Electrical System Wiring Diagrams Sheet 2 of 3



# FOLDING STAIRWAY

## Komatsu 930E Truck

Section 5-5 Electrical System Wiring Diagrams Sheet 3 of 3



# FOLDING STAIRWAY

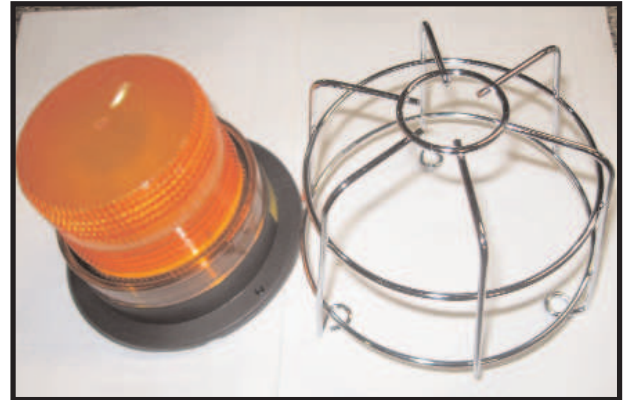
## Komatsu 930E Truck



### Section 5-5 Electrical System Components & Wiring Harnesses



Alarm Stair Up/Down  
PS- 82415



Warning Beacon  
ELSB905

Warning Beacon Guard  
ELSB905-METAL GUARD



Main Harness - Electrical Box  
PS- 960 - MBC



Wiring Harness - Cab Indicator Up/Down  
PS-960E - IWH



Park Brake Harness  
Electrical Box to Park Brake Switch  
PS-960E - PBH



# FOLDING STAIRWAY

## Komatsu 930E Truck



### Section 5-5 Electrical System Components & Wiring Harnesses



Main Harness

PS-960E - ABS



Electrical Harness

Electrical Box to Main 24V Cabinet

PS-960E - PSH



Wiring Harness - Go Switch to Accelerator

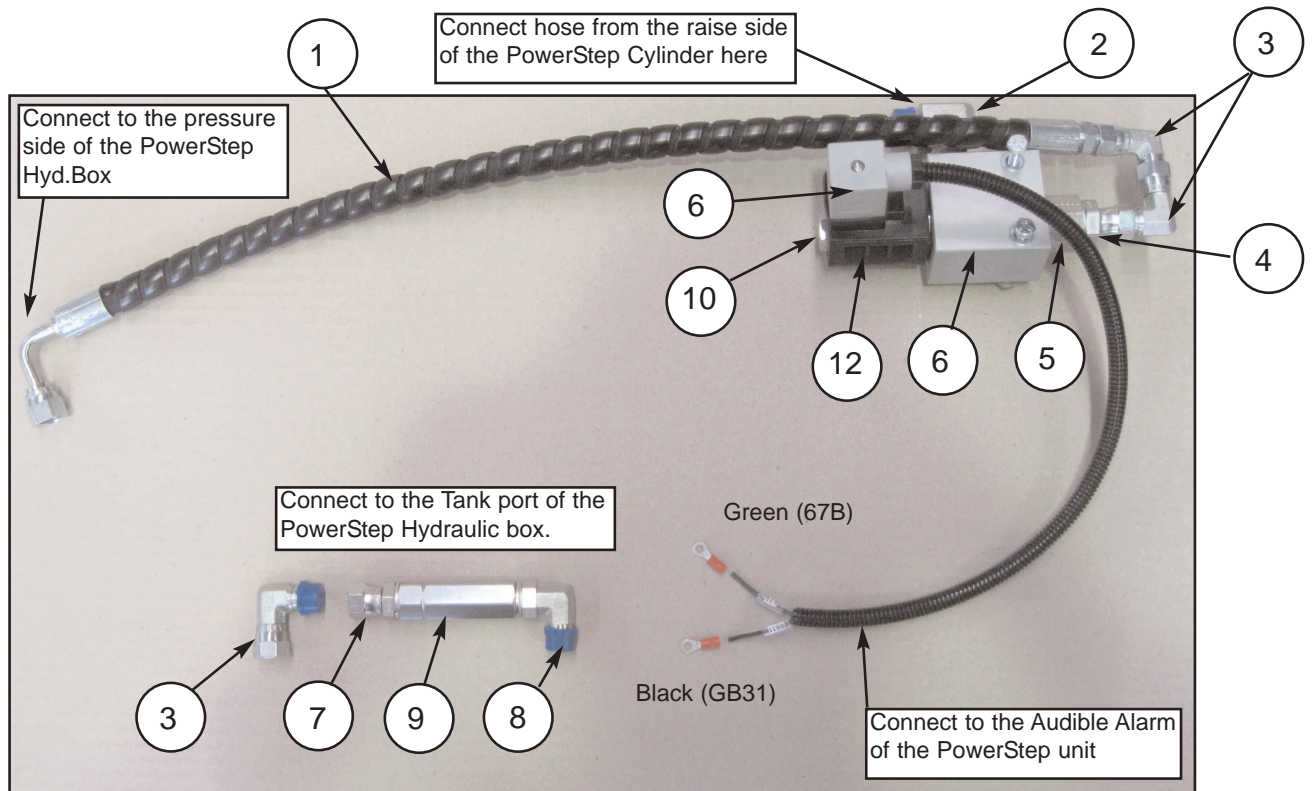
PS-960E - AIH



# Komatsu 930E Truck



### PS-930E-HVK-MK2-Kit Assy. (Optional)



| Item | Part No.       | Part Name            | Qty |  |  |
|------|----------------|----------------------|-----|--|--|
| 1    | PS-60051-720mm | HOSE -720MM          | 1   |  |  |
| 2    | PS-61189       | FITTING              | 1   |  |  |
| 3    | PS-61159       | ELBOW FITTING 90 DEG | 3   |  |  |
| 4    | PS-61169       | STRAIGHT FITTING     | 1   |  |  |
| 5    | PS-61190       | REDUCER              | 1   |  |  |
| 6    | PS-936-9906    | CAP                  | 1   |  |  |
| 7    | PS-61145       | STRAIGHT FITTING     | 1   |  |  |
| 8    | PS-61154       | ELBOW                | 1   |  |  |
| 9    | PS-FPR-14      | CHECK VALVE          | 1   |  |  |
| 10   | PS-DES2BOO     | SPOOL VALVE          | 1   |  |  |
| 11   | PS-EAD102012   | VALVE BODY           | 1   |  |  |
| 12   | DHC-24V-COIL   | 24V COIL             | 1   |  |  |



# FOLDING STAIRWAY

## Komatsu 930E Truck



### Mounting Plates

