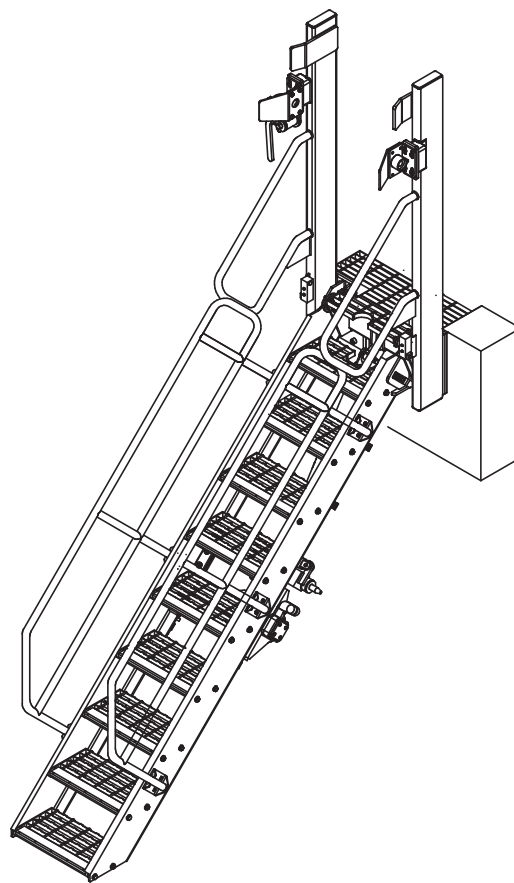


FOLDING STAIRWAY



Manual LeTourneau L1850 Wheel Loader Rear Mounted Stair



Model No.: PSA-L1850-FS- RF
Serial No.: PSA-L1850-001 - ~
Date Manufactured: Dec 2014

FOLDING STAIRWAY

LeTourneau L1850 Wheel Loader

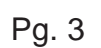
Rear Mounted Stair



CONTENTS

Page 3	Section 1 <u>Installation and Mounting Instructions</u> Installation Drawings:
8	Section 2 <u>Recommended Maintenance Procedure</u>
9	Section 3 <u>Operating Procedure</u>
	Section 4 <u>Drawings and Repair Parts lists</u>
10	4 Assembly Complete Parts List
12	4-1 Stair Access Frame and Mounting Assembly Parts List
14	4-2 Stair Assembly Parts List
16	4-3 Latch Assembly Parts List
18	4-4 Hydraulic Cylinders & Plumbing Parts List Hydraulic Layout Valve Diagram
21	4-5 Power Pack Parts List
25	4-6 Electrical Controls Wiring Diagrams
	Insert and Warning Pages

Section 1 Installation Drawings Mounting Pl. Weldment PSA-L1850-BA-B01



FOLDING STAIRWAY

LeTourneau L1850 Wheel Loader

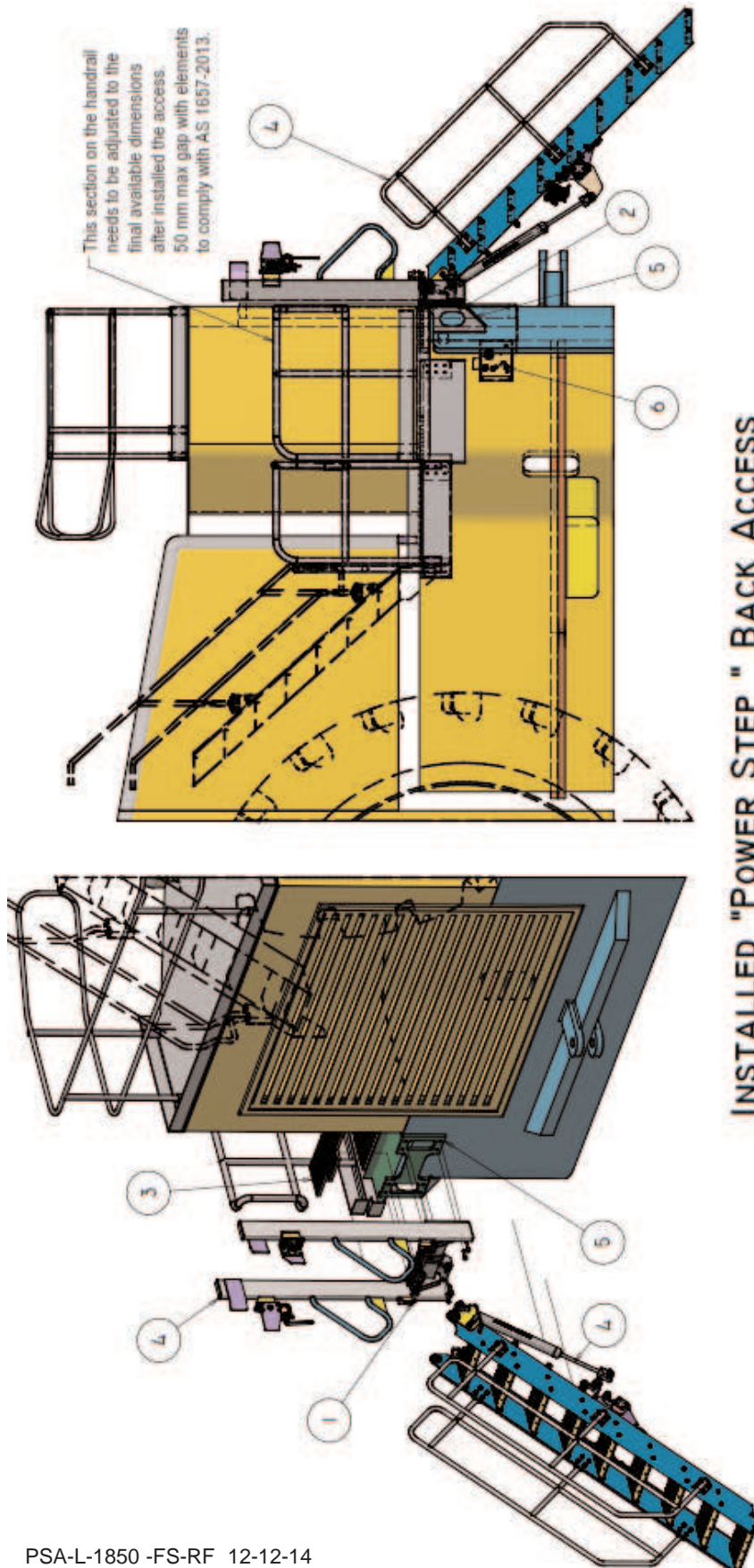


Rear Mounted Stair

Section 1 Installation Drawings Access Installed PSA-L1850-BA-INST

NOTE

Follow all on-site/Mine lifting and safety procedures when installing PSFS



Procedure

1. After welding Mounting Plates (Item 5) to its indicated position, proceed with the installation of the Main Frame (PSA-FRA-A04) and bolt it with the 8 x M8x60 socket head cap screws.
2. Once the frame is secure, proceed to install the stair and secure it with the 2 pins supplied for this purpose.
3. Install the Hydraulic ram and connect the hoses to the Power Pack

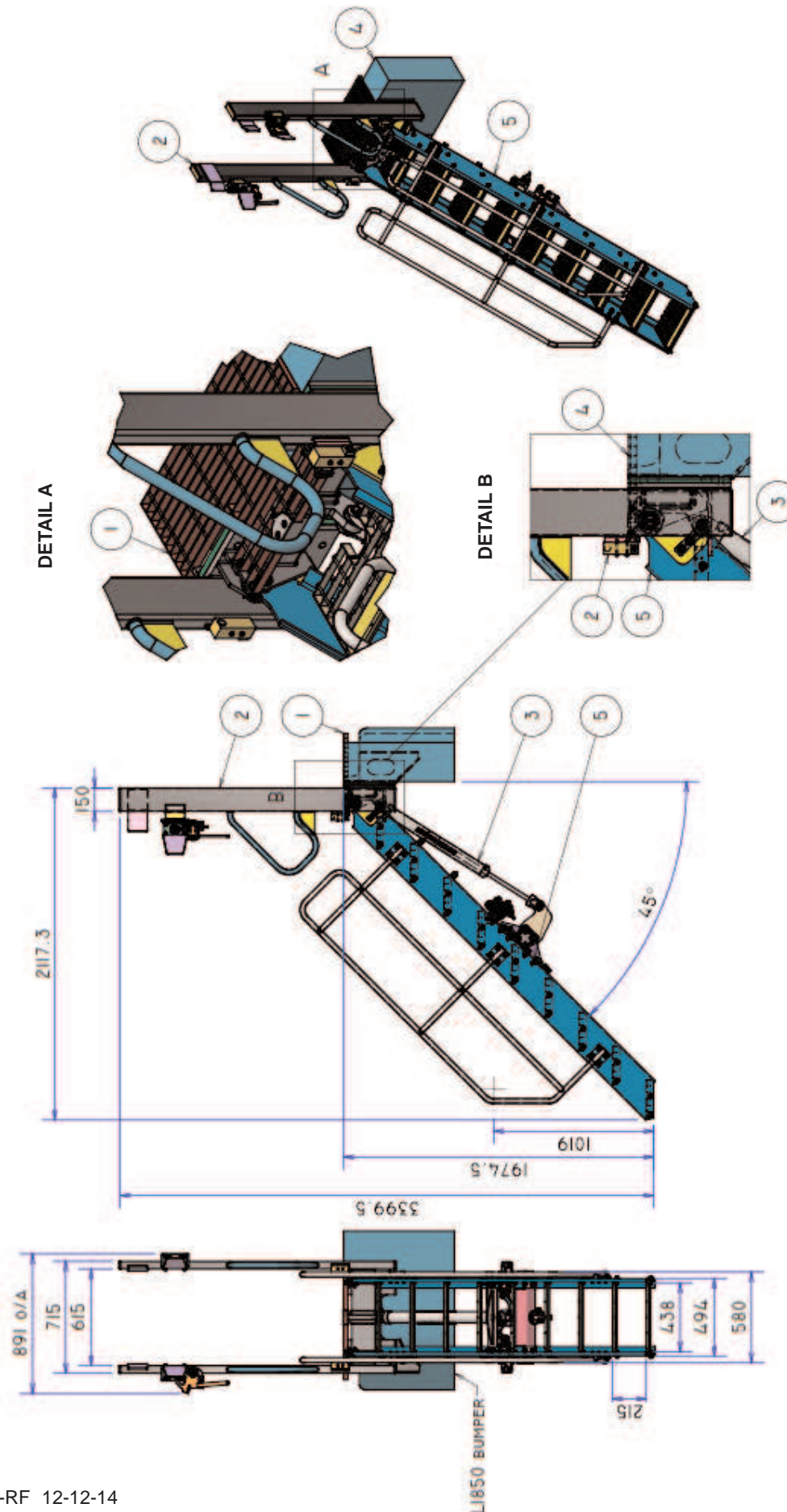
FOLDING STAIRWAY

LeTourneau L1850 Wheel Loader

Rear Mounted Stair

Section 1 Installation Drawings

PSA-L1850-BA-Access Sht. 1

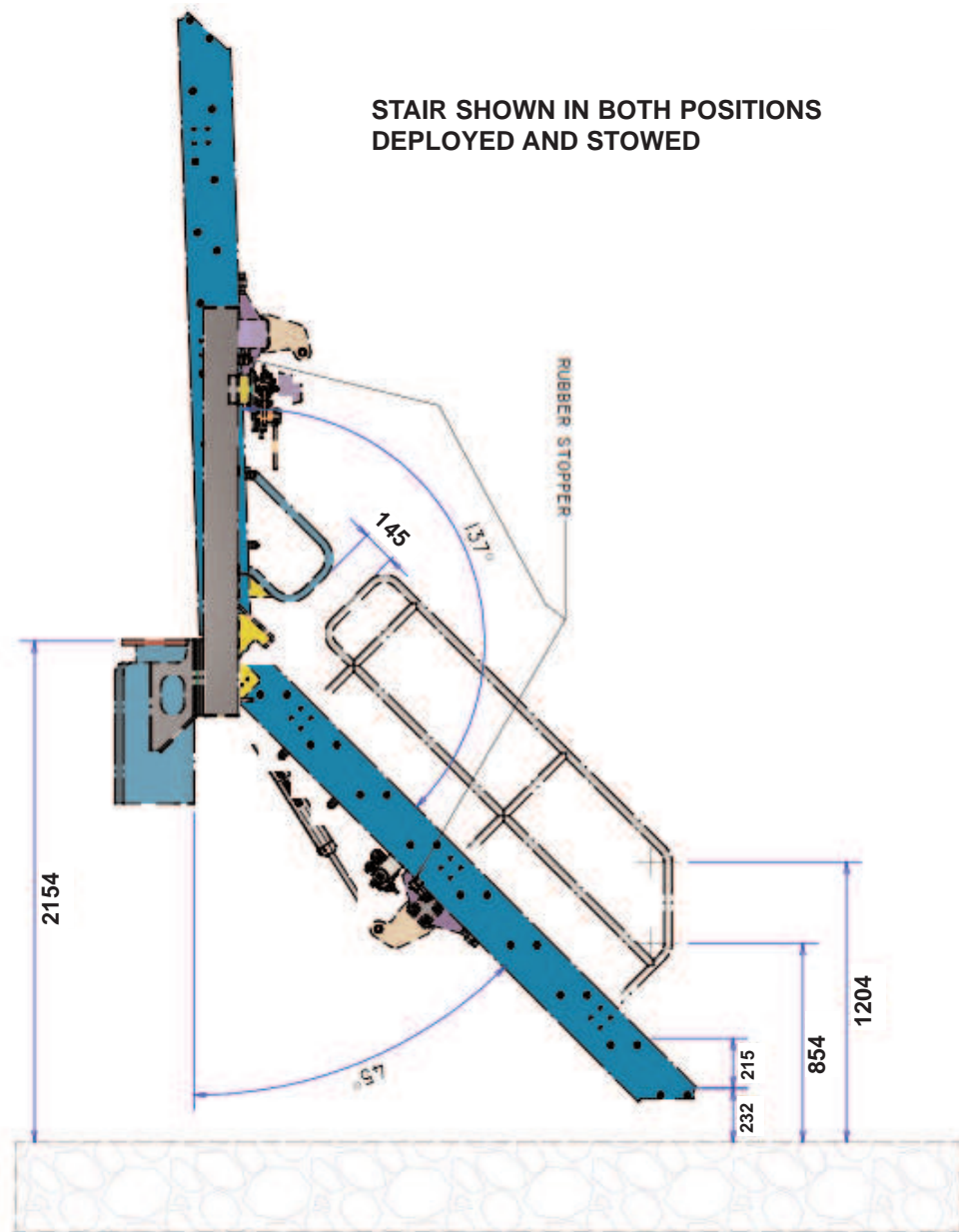


FOLDING STAIRWAY

LeTourneau L1850 Wheel Loader

Rear Mounted Stair

Section 1 Installation Drawings PSA-L1850-BA-Access Sht. 2



FOLDING STAIRWAY

LeTourneau L1850 Wheel Loader

Rear Mounted Stair



Section 1 Installation and Mounting Instructions (cont.)

WARNING

Raising the POWER STEP platform by external means can create a vacuum in the hydraulic cylinder and create the opportunity to allow air into the hydraulic system, defeating the inherent safety features of the POWER STEP.

This must be avoided, to maintain safe operation of the POWER STEP.

In instances where the use of external means to raise the platform must be used, please follow the following instructions:

Loosen hard plumbed hydraulic lines on cylinder side of lock valve on cylinder.

Raise platform by available means.

Note: Make necessary arrangements to collect displaced oil, and be aware that air enters the piston side of the cylinder as platform is raised.

Lock in raised position.

Re-tighten hydraulic fittings.

SECURE THE PLATFORM IN THE RAISED POSITION, MECHANICALLY, CHAIN & TAGOUT THE POWER STEP

To recommission the POWER STEP:

Loosen hydraulic fittings on cylinder side of lock valve.

Note: Collect displaced oil.

Lower platform to lowest position, using alternate safety approved means, fully retracting cylinder. Ensure all personnel are clear of step radius.

Operate electrical control switch to purge air from the hydraulic line systems, lock valve and cylinder.

Tighten the hydraulic fittings either side of lock valves to restriction fittings.

Cycle step unloaded several times to purge all air from hydraulic system.

The Power Step will not operate correctly if there is any air in the hydraulic circuit (due to the incorrect operation of the lock valve).

NOTE.

THE RELIEF PRESSURE OF THE POWERPACK IS TO BE SET TO 2800PSI.

IF THE POWERPACK IS REPLACED, THIS RELIEF PRESSURE WILL NEED TO BE RESET USING INLINE GAUGES.

FAILURE TO DO SO MAY RESULT IN ACCIDENT OR INJURY.

FOLDING STAIRWAY

LeTourneau L1850 Wheel Loader

Rear Mounted Stair



Section 2 Recommended Maintenance Procedure

Daily

Visually check stairway and structure for damage, loose components, handrails, etc.

Check for hydraulic oil leaks from hydraulic cylinders, plumbing and hoses.

Notify the appropriate supervisor for any observed damage or malfunction.

500 Hours

Grease 2 grease nipples on hinge pins

Check main mounting bolts for torque.

Check hydraulic oil level in power pack and top up as necessary. (Stairway in raised position).

Top up using same hydraulic oil as used in hydraulics of machine.

Thoroughly check all electrical wiring for damage, replace as necessary.

Repeat daily check as above

5000 Hours

Change hydraulic oil in tank of hydraulic power pack (5.0 litres)

It is recommended that the same hydraulic oil be used in the power pack as the hydraulics of the machine.

Check and inspect all main bolts on stairway system.

Retorque if required.

Repeat daily check as above

FOLDING STAIRWAY

LeTourneau L1850 Wheel Loader

Rear Mounted Stair

Section 3 Operating Procedure



To Lower Stairway (from the machine)

Position machine in a level, safe area, away from the work face, whenever possible. Apply park brake and lower engine speed to idle.

Check that the area below the Ladder Access System is clear of people and obstacles, and lower ladder by operating the two position electrical switch adjacent to the ladder, to the down position by pressing the switch down.

Hold the switch in the down position until ladder is fully lowered.

If the Machine is parked on uneven ground, the bottom of the stairway may touch the ground before the ladder is in the fully lowered position.

Should this occur, descend the ladder with caution.

To Raise Stairway

Ascend the ladder onto the landing of the Loader.

Ensure the area around the ladder is clear of people and standing to the side, clear of the area the handrails and ladder raises into, operate the electrical switch to the raise position (up).

Hold the switch in the up position until the ladder is in the fully raised position.

The ladder is now raised and stored.

OPERATING NOTES

NOTE: FLOW CONTROL VALVE ADJUSTMENT:

The valve should be positioned to restrict the flow and speed of the Power Step when lowering. Adjust the knob on top of the valve by turning left or right (clockwise) when the step is being lowered, until it is lowering at a safe and reasonable speed.

When it is adjusted, lock the adjusting knob by tightening the grub screw located on the side of the knob.

NOTE: MAGNETIC 'GO' SWITCH ADJUSTMENT:

The switch target trigger area is located on the opposite side and end from the cable entry point on the switch. Once it is mounted to the switch bracket, adjust the switch in or out from the stair steel trigger point, to be within 3mm - 10mm from touching each other when the stair is in the desired rest position.

[DO NOT EXCEED 10mm DISTANCE BETWEEN THE SWITCH AND STRIKER PLATE].

Test by raising and lowering the Power Step a couple of times and adjust again if necessary.

FOLDING STAIRWAY

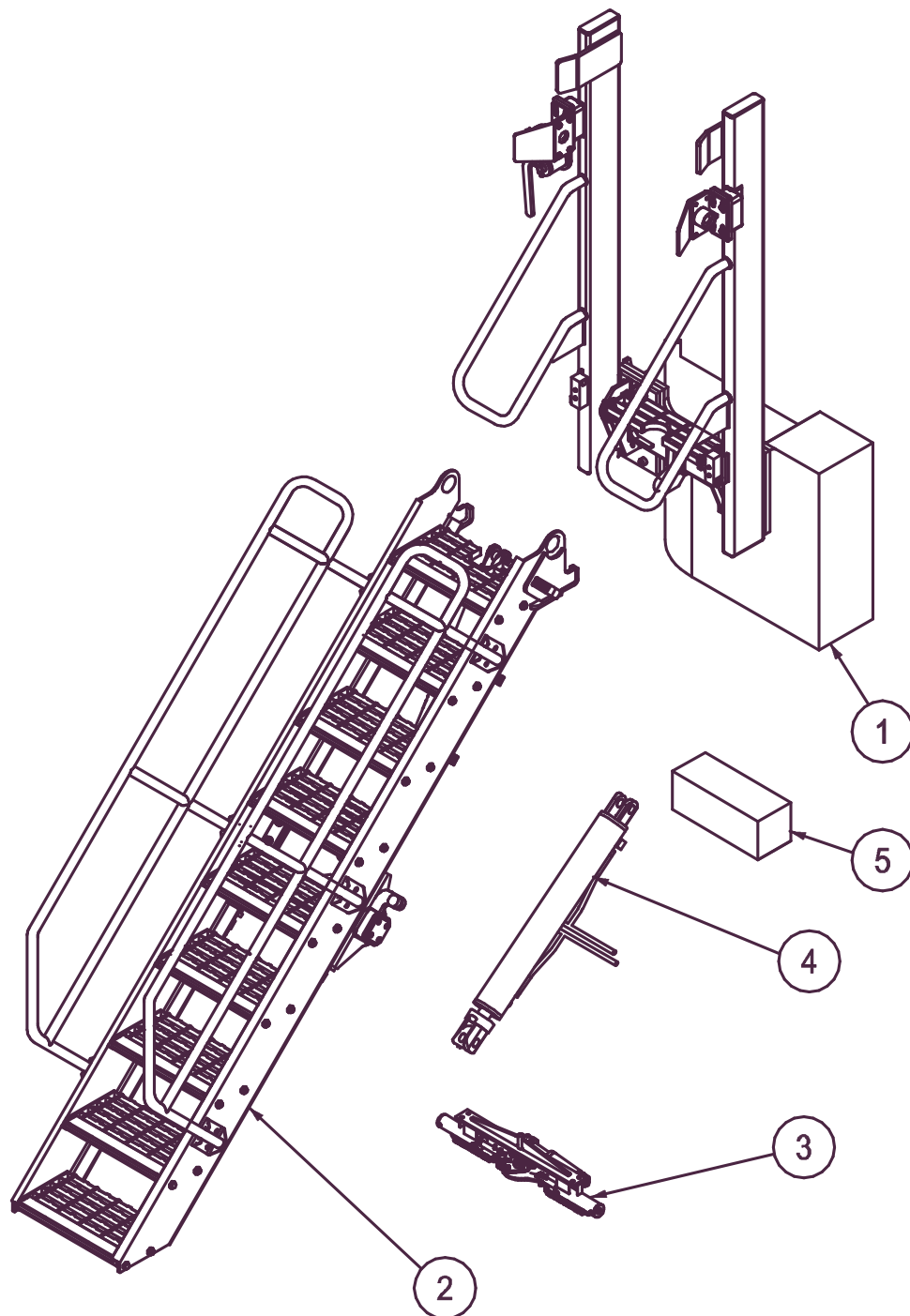
LeTourneau L1850 Wheel Loader

Rear Mounted Stair

Section 4 Assembly Complete



PSA-L1850-FS-RF



FOLDING STAIRWAY

LeTourneau L1850 Wheel Loader

Rear Mounted Stair

Section 4 Assembly Complete



See Drawing Page 11

ITEM	PART NO.	PART NAME	QTY		
	PSA-L1850-FS-RF	ASSEMBLY COMPLETE	1		
1	PS-FRA-A04	ACCESS FRAME & MOUNTING ASSEMBLY	1		
2	PS-STR-A16	STAIR ASSEMBLY	1		
3	PS-LOC-A07	LATCH ASSEMBLY	1		
4	PS-62998-AH PS- 62997-A	HYDRAULIC CYLINDER (Stair) HYDRAULIC CYLINDER (Latch)	1		
5	PS-80103A-SLD	POWER PACK	1		

FOLDING STAIRWAY

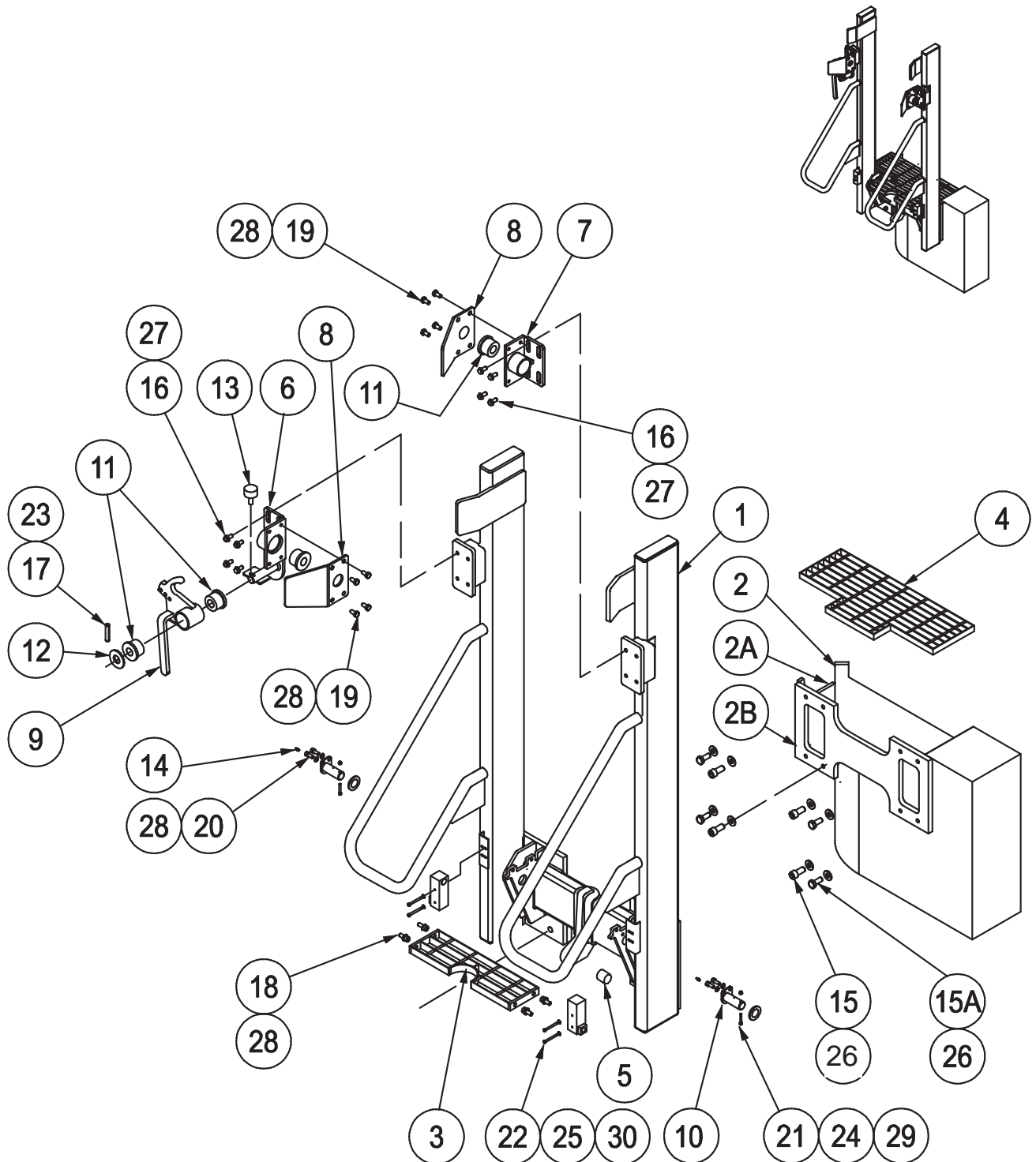
LeTourneau L1850 Wheel Loader



Rear Mounted Stair

Section 4.1 Access Frame and Mounting Assembly PS-FRA-04

See Parts List Pg. 12 Does not include Items 2, 2A & 2B



FOLDING STAIRWAY

LeTourneau L1850 Wheel Loader



Rear Mounted Stair

Section 4.1 Access Frame and Mounting Assembly PS-FRA-A04

See Drawing Page 11 Does not include Items 2, 2A & 2B

Item	Part No.	Part Name	Qty		
1	PS-FRA-A04	STAIR ACCESS FRAME ASSEMBLY	1		
2	PS-FRA-C56	ACCESS MOUNT BASE	1		
2A	PS-FRA-C55	SIDE STIFFENER PLATE	1		
2B	PS-FRA-C54	BOTTOM STIFFNER PLATE	1		
3	PS-STR-B17	TOP LANDING TREAD	1		
4	PS-FLR-C29	MESH FLOOR	1		
5	PS-63009-B	HARDENED BUSH	1		
6	PS-LOC-B06	STRIKER-LEFT SIDE	1		
7	PS-LOC-B07	STRIKER-RIGHT SIDE	1		
8	PS-LOC-C46	BUFFER LEADER PLATE	2		
9	PS-LOC-C36	MANUAL RELEASE LEVER	1		
10	PS-P30-009	PIVOT PIN	2		Inc. 21,24,24,14
11	PS-LOC-C35	LATCH BUSH	4		
12	PS-LOC-C29	WASHER	1		
13	PS-40002	LATCH LEVER BUFFER Mackay	1		
14	PS-61006	GREASE NIPPLE M6	2		
15	CPS-M16X40ZP	BOLT-M16 x 40	4		
15A	CPS-M16X40SC	SOCKET HEAD M16 x 40	4		
16	CPS-M12X30ZP	BOLT-M12 x 30	8		
17	CPS-M10X60ZP	BOLT-M10 x 60 CAP SCREW	1		
18	CPS-M10X25SC	BOLT-M10 x 25 CAP SCREW	4		
19	CPS-M10X20ZP	BOLT-M10 x 20	8		
20	CPS-M10X16ZP	BOLT-M10 x 16	4		
21	CPS-M6X50ZP	BOLT-M6 x 50	2		
22	CPS-M5X50ZP	BOLT-M5 x 50	4		
23	PS-M10NN	NUT-NYLOC-M10	1		
24	PS-M6NNN	NUT-NYLOC-M6	2		
25	PS-M5NN	NUT-NYLOC-M5	4		
26	CPS-M16WH	WASHER-HARDENED-M16	8		
27	CPS-M12WH	WASHER-HARDENED-M12	8		
28	CPS-M10WH	WASHER-HARDENED-M10	16		
29	CPS-M6WH	WASHER-HARDENED-M6	4		
30	CPS-M5WH	WASHER-HARDENED-M5	8		

FOLDING STAIRWAY

LeTourneau L1850 Wheel Loader

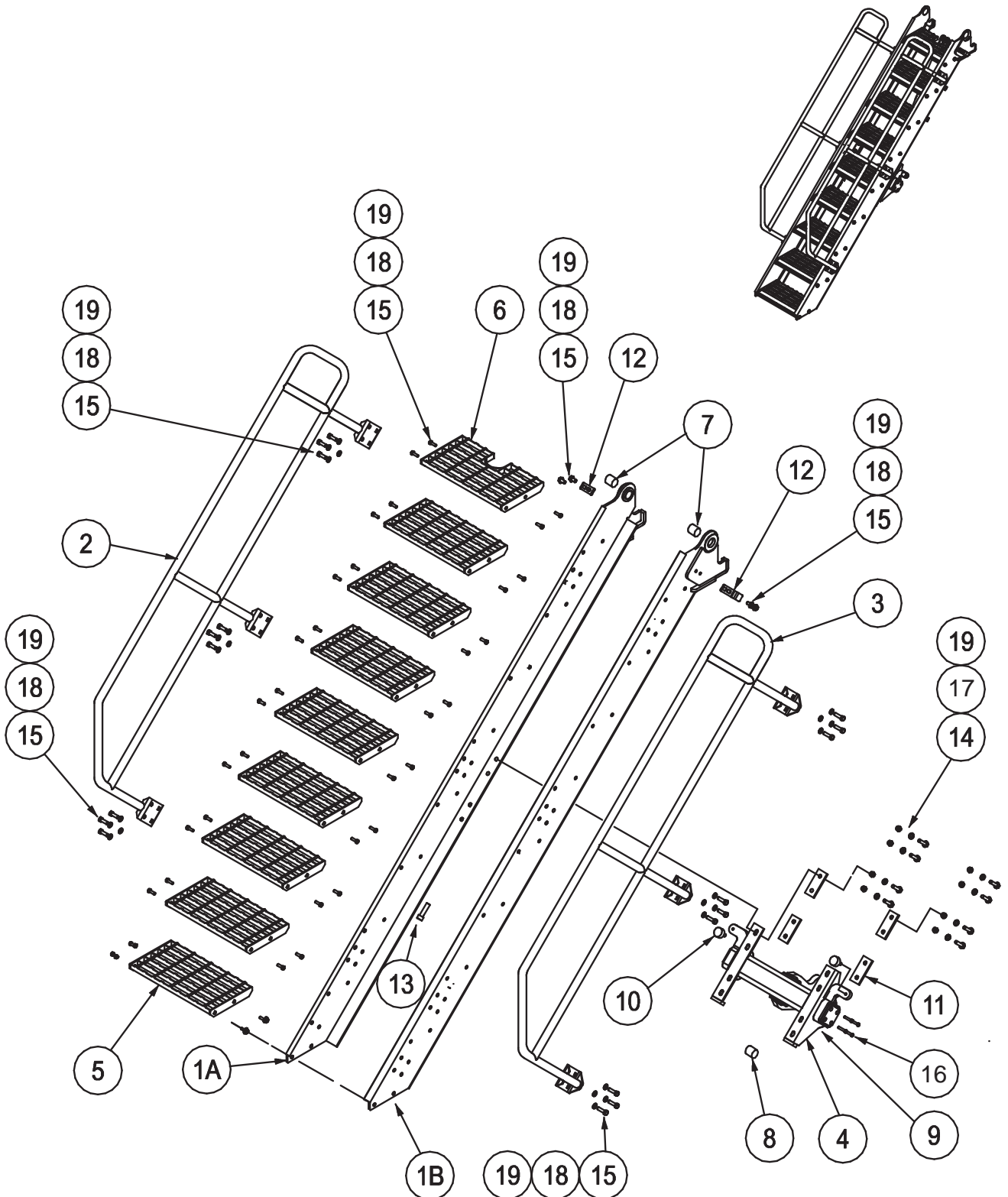
Rear Mounted Stair

Section 4-2 Stair Assembly

See Parts List Page 14



PSA-STR-A16



FOLDING STAIRWAY

LeTourneau L1850 Wheel Loader

Rear Mounted Stair

Section 5-2 Stair Assembly

See Drawing Page 13



PSA-STR-A16

Item	Part No.	Part Name	Qty		
1A	PS-STR-B11-03	STAIR STILE - LEFT HAND	1		
1B	PS-STR-B11-04	STAIR STILE - RIGHT HAND	1		
2	PS-HRI-B06-03	STAIR HANDRAIL - LEFT HAND	1		
3	PS-HRI-B06-04	STAIR HANDRAIL - RIGHT HAND	1		
4	PS-STR-B10-01	STAIR ACTUATOR BEAM	1		
5	PS-STR-C21-01	STAIR TREAD	8		
6	PS-STR-C21-02	STAIR TREAD -TOP	1		
7	PS-P30-008-02	PIVOT BUSH	2		
8	PS-63009B	BUSH- (Actuator Beam)	1		
9	PS-STR-C62	BUMPER PAD (Rubber)	2		
10	PS-34108	BUFFER-RUBBER	2		
11	PS-23637	WASHER PLATE	8		
12	PS-FRA-C42	STRIKER	2		
13	CPS-M16X60ZP	BOLT-M16 x 60 CAP SCREW	2		
14	CPS-M12X50P	BOLT-M12 x 50	8		
15	CPS-M12X35P	BOLT-M12 x 35	64		
16	CPS-M8X40ZP	BOLT-M8 x 40 CAPSCREW	8		
17	CPS-M12NN	NYLOC-NUT-M12	8		
18	CPS-M12NZP	NUT-M12	64		
19	CPS-M12WH	WASHER-HARDENED-M12	144		

FOLDING STAIRWAY

LeTourneau L1850 Wheel Loader

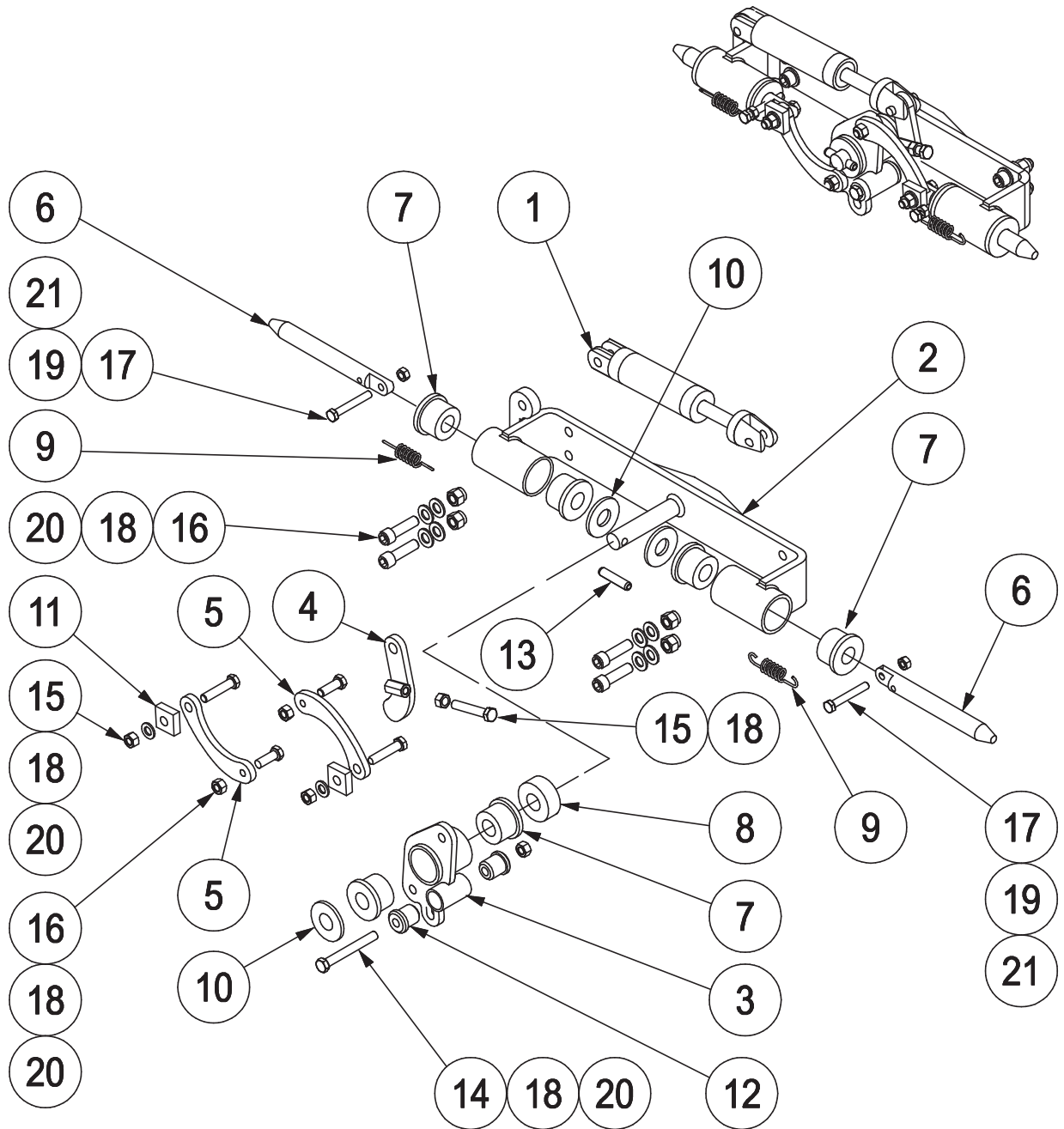
Rear Mounted Stair

Section 4-3 Latch Assembly

See Parts List Pg.15



PSA-LOC-A07



FOLDING STAIRWAY

LeTourneau L1850 Wheel Loader

Rear Mounted Stair

Section 4-3 Latch Assembly

See Drawing Page 15



PSA LOC- A07

Item	Part No.	Part Name	Qty		
1	PS-62997	CYLINDER	1		Refer Pg 20
2	PS-LOC-B03	LATCH FRAME	1		
3	PS-LOC-B05	LATCH WRIST FABRICATION	1		
4	PS-LOC-B04	ACTUATOR ARM FABRICATION	1		
5	PS-LOC-C23	BOLT LINK	2		
6	PS-LOC-C24	LOCK PIN	2		
7	PS-LOC-C35	LATCH BUSH (Polyurethane)	6		
8	PS-LOC-C31	WRIST SPACER	1		
9	PS-39009	SPRING	2		
10	PS-LOC-C29	WASHER	3		
11	PS-LOC-C49	ANTI-RATTLE WASHER	2		
12	PS-S245	LATCH BUSH-(WRIST PLATE)	2		
13	CPS-M10X70RP	ROLL PIN	1		
14	CPS-M12X100ZP	BOLT-M12 x 100	1		
15	CPS-M12X55ZP	BOLT-M12 x 55	3		
16	CPS-M12X35ZP	BOLT-M12 x 35	6		
17	CPS-M10X70ZP	BOLT-M10 x 70	2		
18	CPS-M12NZIP	NUT-M12	10		
19	CPS-M10NZIP	NUT-M10	2		
20	CPS-M12WH	WASHER-HARDENED-M12	20		
21	CPS-M10WH	WASHER-HARDENED-M10	4		

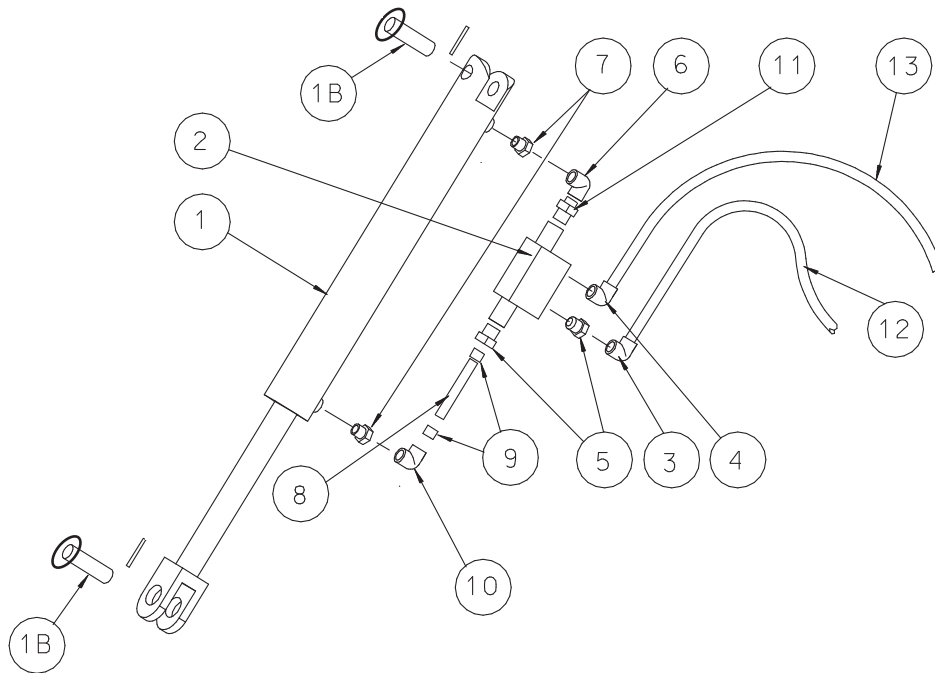
FOLDING STAIRWAY

LeTourneau L1850 Wheel Loader



Rear Mounted Stair

Section 4-4 Hydraulic Cylinder & Plumbing Cyl. P/No. PS- 62998-AH



NOTE: HYDRAULIC CYLINDER ASSEMBLY P/No PS- 62998-AH includes Part No.s 1 to 11

Item	Part No.	Part Name	Qty		
1	PS-62998-AH	HYDRAULIC CYL. (with hard plumbing)	1		
→	PS-62998-HPK	HARD PLUMBING KIT	1		
1A	PS-62998-A	HYDRAULIC CYLINDER 2 1/2"	1		
1B	PS-63009-P	PIN - CYLINDER	2		
1S	PS-63103	SEAL KIT (Not shown)	1		
2	PS-63201	VALVE - PILOT OPERATED LOCKING	1		
3	PS-61159	FITTING - ELBOW-9/16" JIC	1		
4	PS-61154	FITTING - ELBOW- O RING 1/4BSPPx9/16" JIC	1		
5	PS-61157	FITTING - O RING 1/4BSPPx 9/16" JIC	2		
6	PS-61158-5MM	FITTING - 5mm RESTRICTION 90 DEG	1		
7	PS61163	REDUCER JIC x BSPP	2		CYL. END
8	PS-61160	TUBE (Cut to suit) 510mm	1		
9	PS-61147	FERRULES	2		
10	PS-61158-1MM	FITTING - 1MM RESTRICTION 90 DEG	1		
11	PS-61145	FITTING- 9/16" JIC SWIVEL	1		ROD END
12	PS-60051-3.5M	HOSE- HYDR. (7/16" JIC SWIVEL FITTING)	1		
13	PS-60050-3.5M	HOSE- HYDR. (9/16" JIC SWIVEL FITTING)	1		

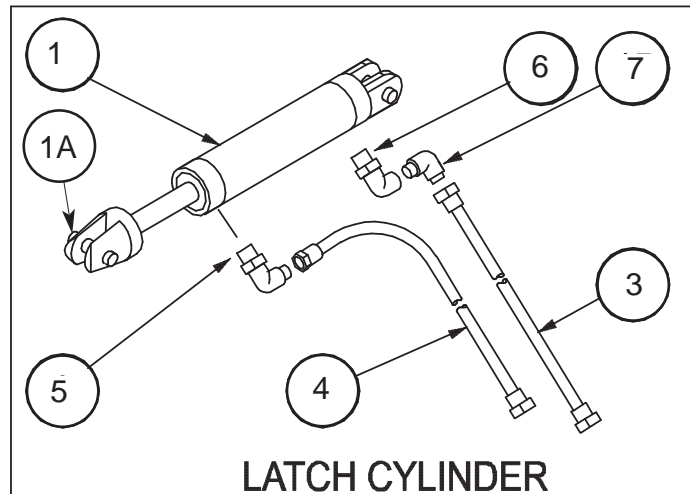
FOLDING STAIRWAY

LeTourneau L1850 Wheel Loader



Rear Mounted Stair

Section 4-4 Hydraulic Cylinder & Plumbing Latch PS- 62997-A



Item	Part No.	Part Name	Qty		
1	PS-62997	HYDRAULIC CYLINDER - LATCH	1		
1A	PS-62997-P	CYLINDER PIN	2		
2	PS-62997-SK	SEAL KIT-LATCH (NOT SHOWN)	1		
3	PS-60051-5M 9/16	HOSE-HYDR. (9/16" JIC ST. SWIVEL 5M)	1		
4	PS-60050-1.8M 7/16	HOSE-HYDR. (7/16" JIC ST. SWIVEL 5M)	1		
5	PS-61150	ELBOW-FITTING 7/16"	1		
6	PS-61152	ELBOW-FITTING 9/16"	1		
7	PS-61159	ELBOW-FITTING 9/16"	1		

FOLDING STAIRWAY

LeTourneau L1850 Wheel Loader

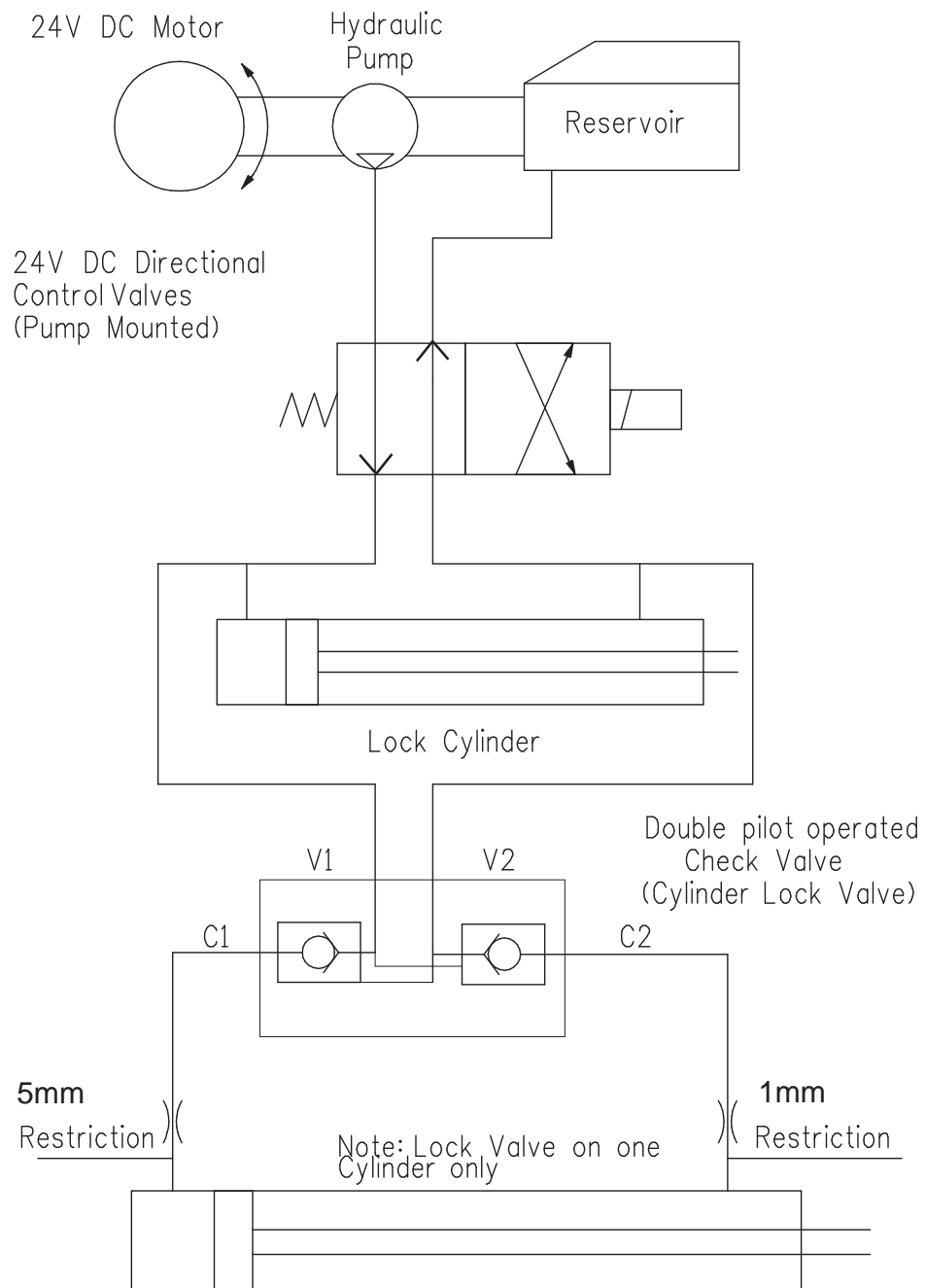
Rear Mounted Stair

Section 4-4 Hydraulics

(Valve Diagram)



Double Acting Hydraulic System with
directional Control Valve and Cylinder
Lock Valve



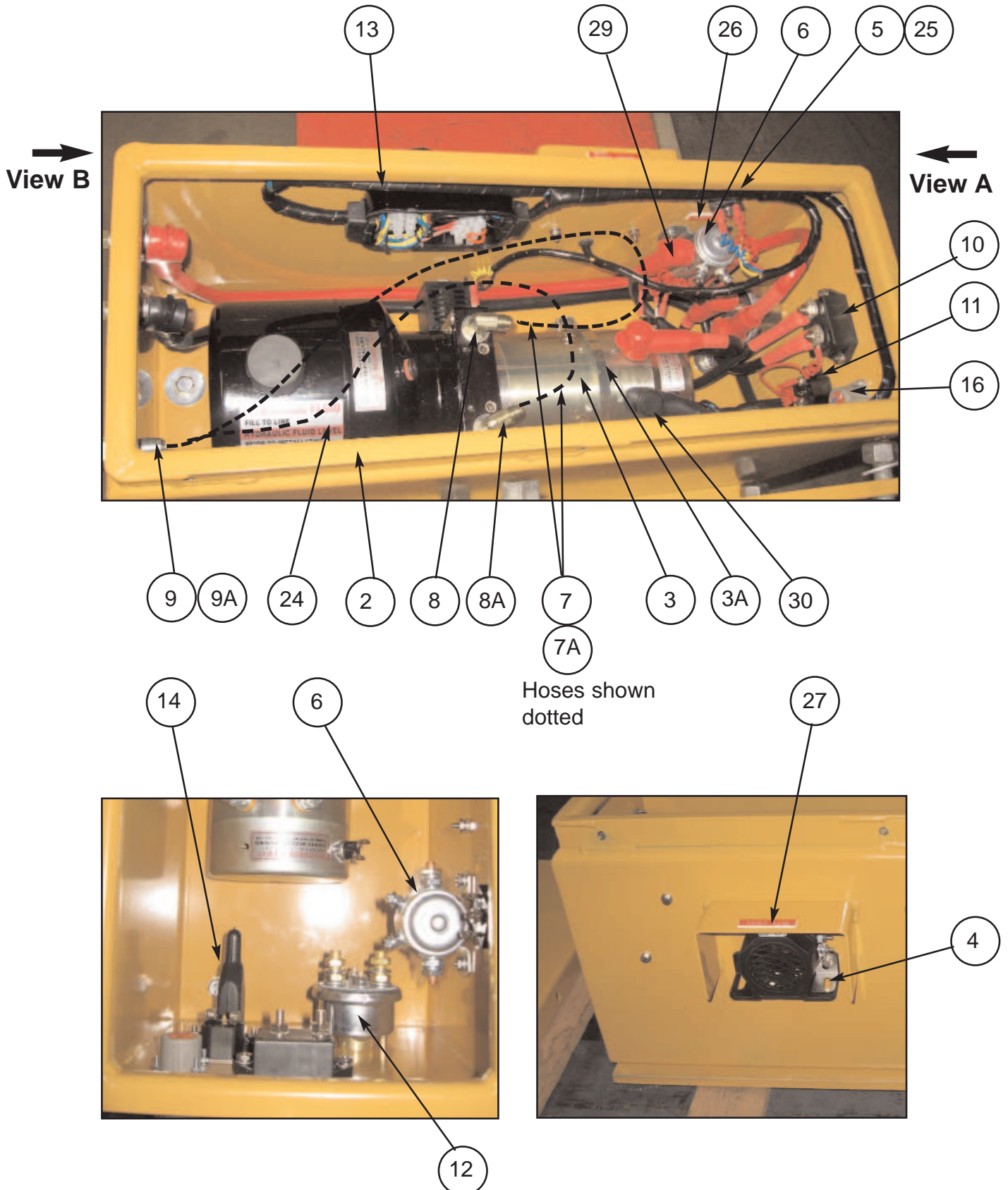
FOLDING STAIRWAY

LeTourneau L1850 Wheel Loader

Rear Mounted Stair
Section 4-5 Power Pack



See Parts List Pg 22



FOLDING STAIRWAY

LeTourneau L1850 Wheel Loader

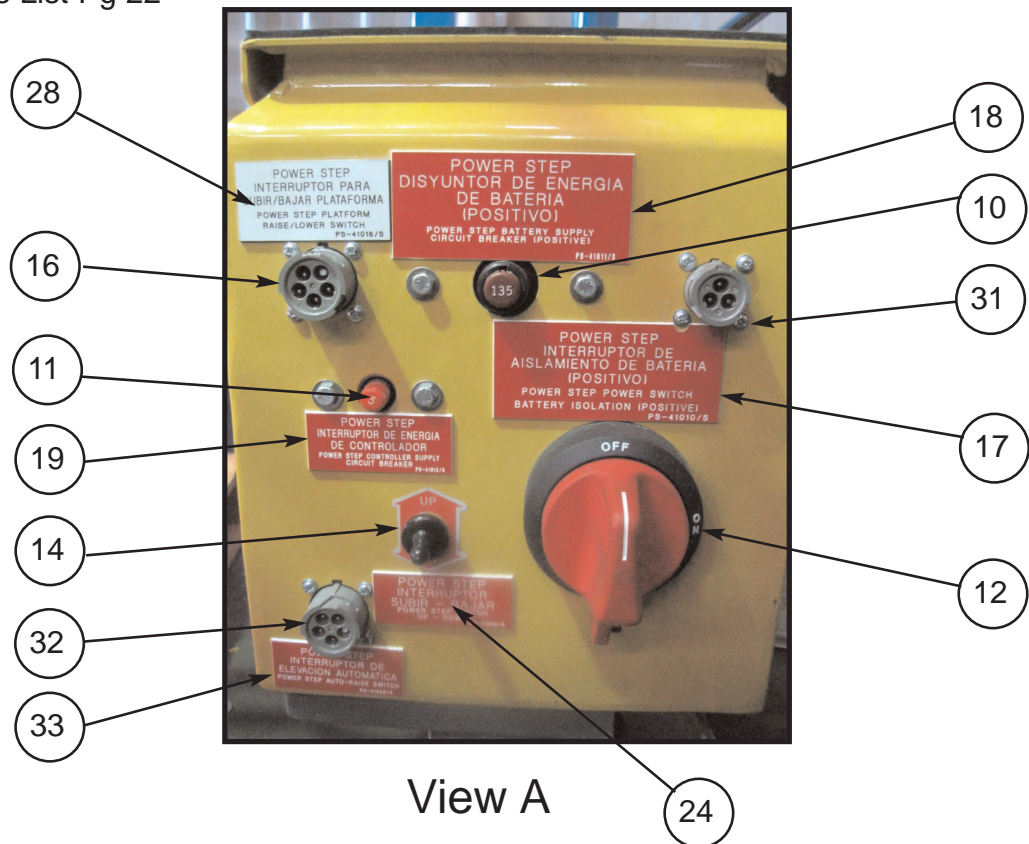
Rear Mounted Stair

Section 4-5 Power Pack

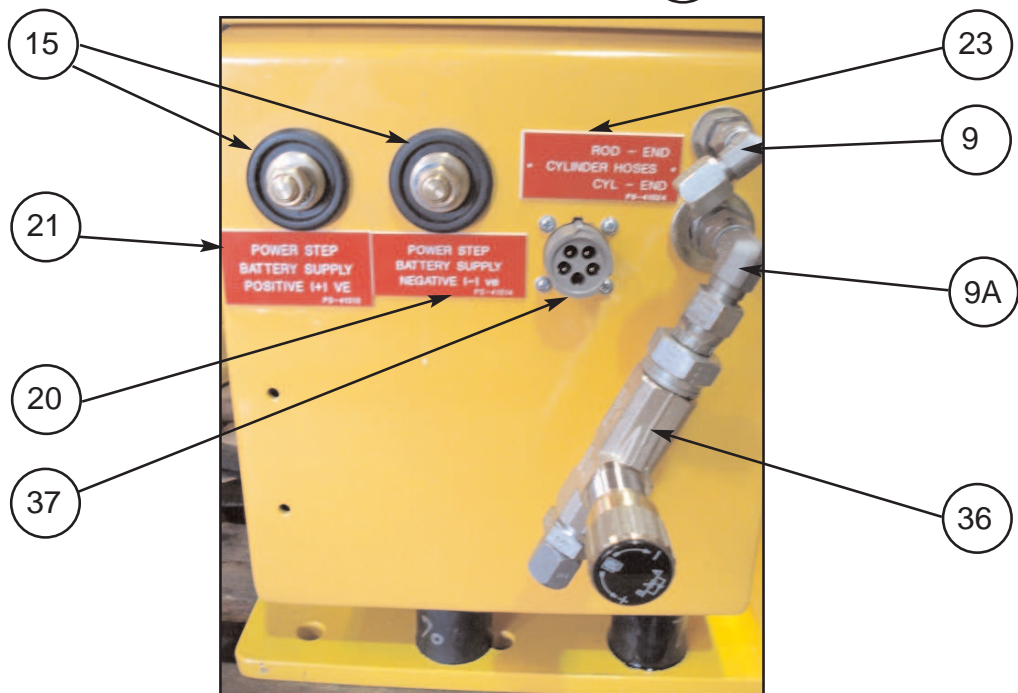
See Parts List Pg 22



PS-80103A-SLD



View A



View B

NOTE.

THE RELIEF PRESSURE OF THE POWERPACK IS TO BE SET TO 2800PSI.
IF THE POWERPACK IS REPLACED, THIS RELIEF PRESSURE WILL NEED TO BE
RESET USING INLINE GAUGES.
FAILURE TO DO SO MAY RESULT IN ACCIDENT OR INJURY

FOLDING STAIRWAY

LeTourneau L1850 Wheel Loader

Rear Mounted Stair

Section 4-5 Power Pack

See Photos Pg 20 & 21



Item	Part No.	Part Name	Qty		
1	PS-80103A-SLD	POWER PACK ASSEMBLY	1		
2	PS-21107-METAL	MOTOR ENCLOSURE- SEALED ST/ST	1		
3	PS-80103A	POWER PACK	1		
3A	PS-80103-CLAMP	CLAMP ELECTRIC MOTOR	1		
3B	PS-84201-100	HEAT SENSOR	1		
4	PS-82415	AUDIBLE ALARM	1		
5	PS-84214	BRIDGE RECTIFIER	1		
6	PS-82492	SOLENOID 24V START MOTOR	1		
7	PS-60051-900MM 9/16"	HYDR. HOSES 9/16" JIC STRAIGHT SWIVEL	1		
7A	PS-60050-900MM 7/16"	HYDR. HOSES 7/16" JIC STRAIGHT SWIVEL	1		
8	PS-61152	HYDRAULIC FITTING 9/16"	1		
8A	PS-61150	HYDRAULIC FITTING 7/16"	1		
9	PS-61176	HYDRAULIC FITTING 7/16"	1		
9A	PS-61177	HYDRAULIC FITTING 9/16"	1		
10	PS-84213	135A CIRCUIT BREAKER	1		
11	PS-84212	5A CIRCUIT BREAKER	1		
12	PS-84303	ISOLATION SWITCH	1		
13	PS-1712080	SEALED WIRING BOX	1		
14	PS-73012	TOGGLE SWITCH KIT	1		
15	PS-82493	BATTERY FEED STUDS	2		
16	PS-HD10-5-16P	5 PIN SOCKET	1		
17	PS-41010	DECAL-Battery Isolation	1		
18	PS-41011	DECAL-Battery Supply C/B-135A	1		
19	PS-41012	DECAL-Controller Supply C/B-10A	1		
20	PS-41013	DECAL-Battery Supply-Positive	1		
21	PS-41014	DECAL-Battery Supply-Negative	1		
22	PS-41023	DECAL-Up/Down	1		
23	PS-41024	DECAL HYDRAULIC-HOSES	1		
24	PS-41041	DECAL OIL TANK	1		
25	PS-41019	DECAL BRIDGE RECTIFIER	1		
26	PS-41017	DECAL SOLENOID	1		
27	PS-41018	DECAL ALARM	1		
28	PS-41016	DECAL RAISE/LOWER SWITCH	1		
29	PS-73010	RUBBER BOOT RED	6		

FOLDING STAIRWAY

LeTourneau L1850 Wheel Loader

Rear Mounted Stair

Section 4-5 Power Pack

See Photos Pg 20 & 21



Item	Part No.	Part Name	Qty		
30	PS-73009	RUBBER BOOT BLACK	3		
31	PS-HD10-3-16P	3 PIN SOCKET (PARK BREAK)	1		
32	PS-HD10-5-16P	5 PIN SOCKET (AUTO-RAISE)	1		
33	PS-41032	DECAL AUTO-RAISE SOCKET	1		
34	PS-60051-3.5M	HYDRAULIC HOSE 9/16" x 3.5M	1		Not Shown
35	PS-60050-3.5M	HYDRAULIC HOSE 7/16" x 3.5M	1		Not Shown
36	PS-63202A	VALVE FITTING (FLOW CONTROL VALVE)	1		
37	PS-HD10-5-16P	5 PIN SOCKET	1		

FOLDING STAIRWAY

LeTourneau L1850 Wheel Loader

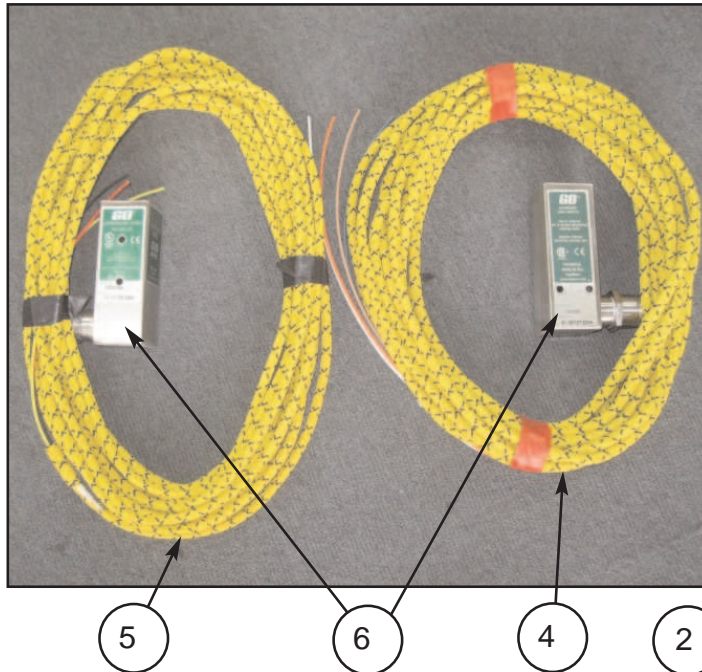
Rear Mounted Stair

Section 4-6 Electrical Controls



Proximity Switch Assembly

Mounted on Fixed Landing



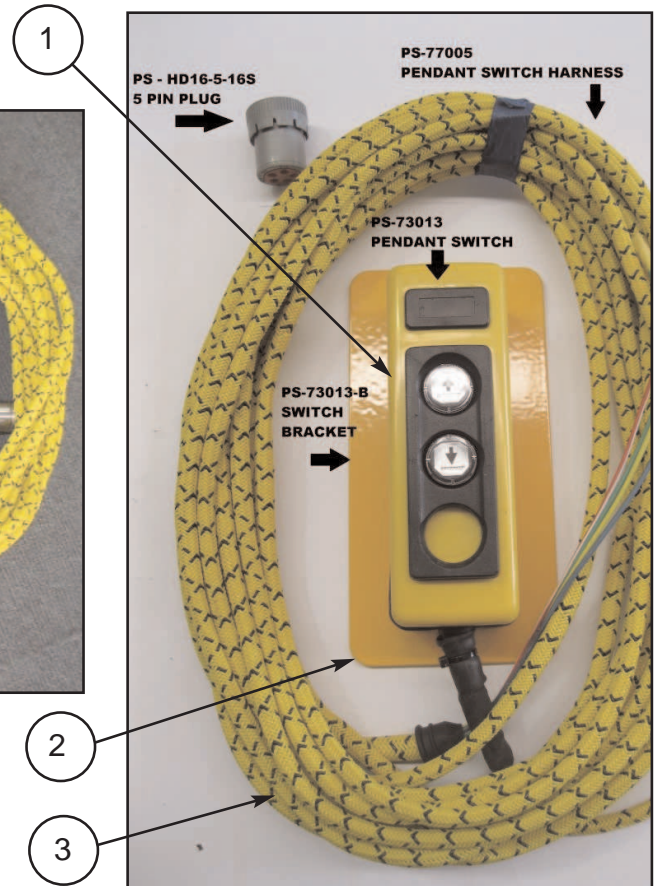
Cab Harness & Equipment

Refer Wiring Harness Drawings



Control Pendant Switch

Mounted on Handrail



FOLDING STAIRWAY

LeTourneau L1850 Wheel Loader

Rear Mounted Stair

Section 4-6 Electrical Controls

See Page 23



Item	Part No.	Part Name	Qty		
1	PS-73013	CONTROL PENDANT SWITCH	1		
2	PS-73013-B	CONTROL PENDANT BRACKET	1		
3	PS-77005	HAND RAIL SWITCH HARNESS	1		
4	PS-77009AR	AUTO RAISE HARNESS	1		Optional only
5	PS-77004	CABIN TO SWITCH HARNESS	1		
6	PS-75430	PROXIMITY SWITCH	2		1 X Optional
7	PS-77002	CABIN BOX LED LIGHT INDICATOR	1		
8	PS-77003	WIRING HARNESS IN CABIN	1		

WARNING

LOW VOLTAGE BATTERIES WILL HARM THE FUNCTION OF THE POWER PACK AND THE CONTROL SWITCHES.

DAMAGE RESULTING DUE TO LOW VOLTAGE BATTERIES WILL VOID WARRANTY ON ALL ELECTRICAL COMPONENTS.

FOLDING STAIRWAY

LeTourneau L1850 Wheel Loader

Rear Mounted Stair

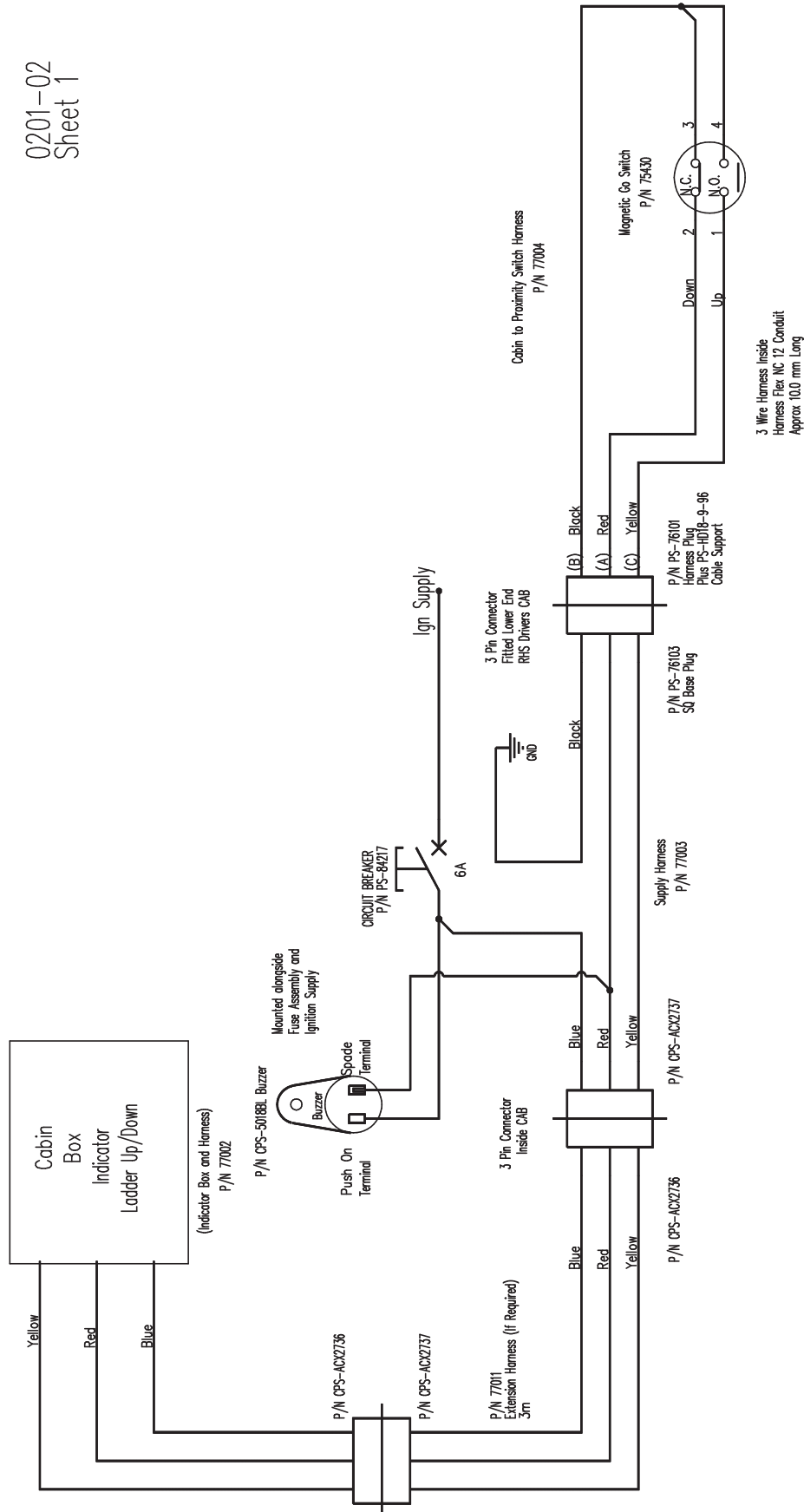
Section 4-6 Electrical Controls



Wiring Diagrams Page 1

0201-02
Sheet 1

WIRING HARNESS

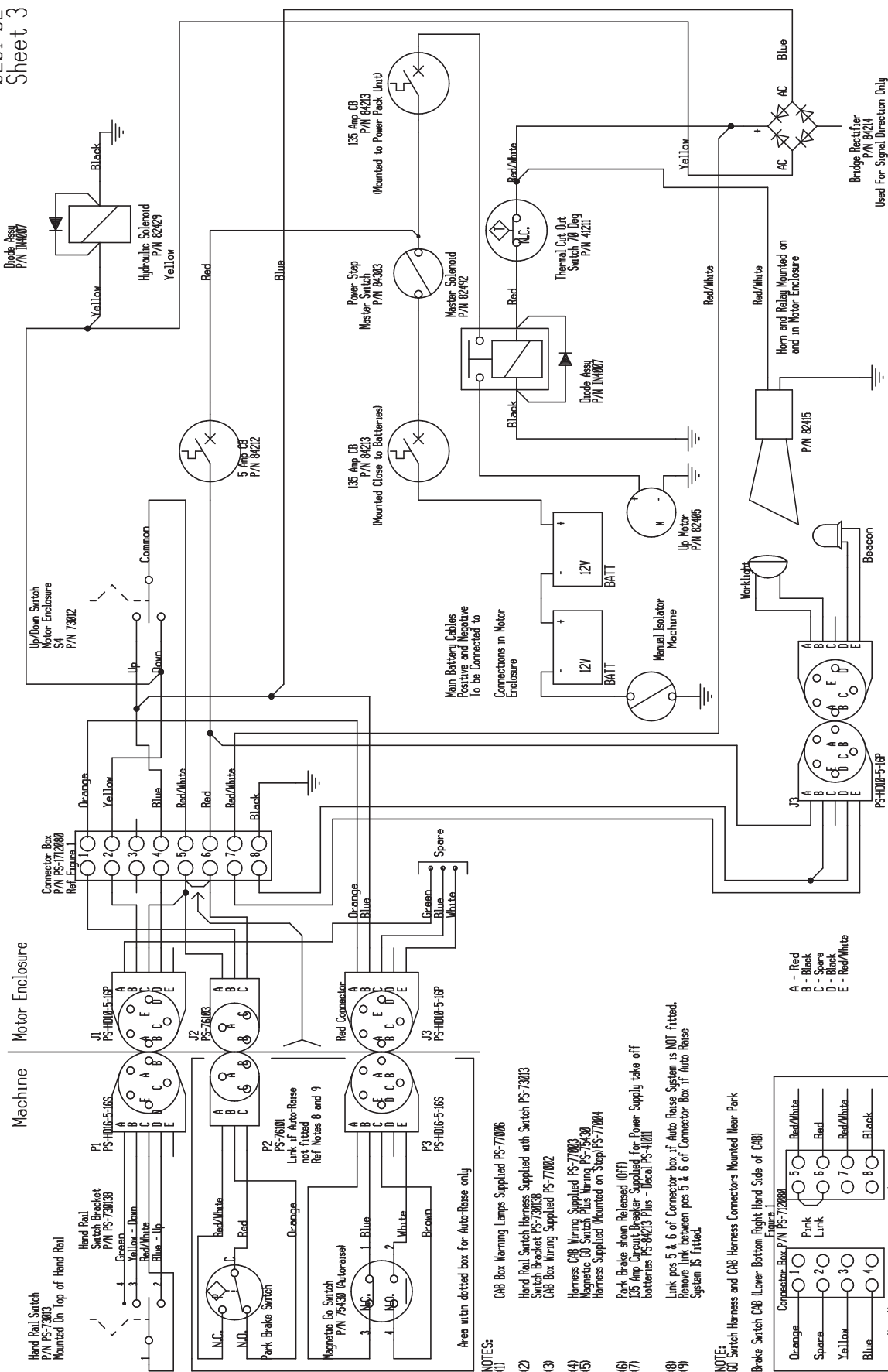


Rear Mounted Stair

Section 4-6 Electrical Controls



0201-02
Sheet 3



FOLDING STAIRWAY

LeTourneau L1850 Wheel Loader

Rear Mounted Stair

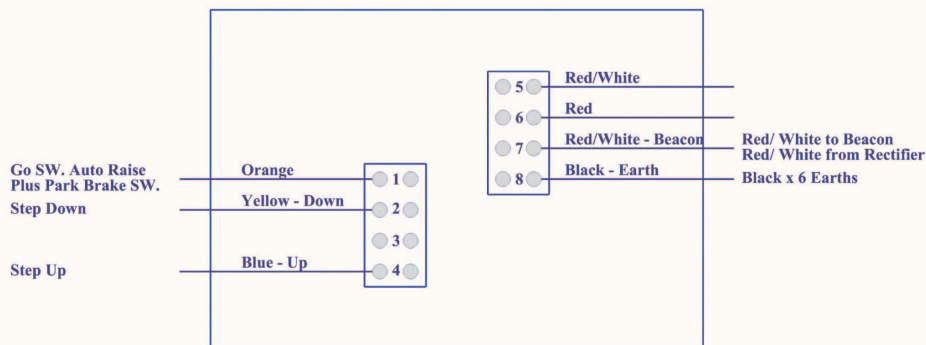
Section 4-6 Electrical Controls



Wiring Diagrams Page 3

WIRING HARNESS 1

0201-02
Sheet 5



Park Brake Harness - P/No 77006-PB

<u>Plug Term</u>	<u>Colour</u>		<u>Terminal ID.</u>	
(C)	Red	-	COM	Length 10m (Harness Flex No 12)
(A)	Red/White	-	N.C.	
(B)	Orange	-	N.O.	

Go Switch Harness (Auto Raise) P/No 77009-AR

<u>Plug Term</u>	<u>Colour</u>		<u>Terminal ID.</u>	
(B)	Blue	-	No. 1 Terminal N.C. Contact	Length 10m (Harness Flex No 12)
(E)	White (Spare)	-	No. 2 Terminal N.O. Contact	
(A)	Orange	-	No. 3 Terminal N.C. Contact	
(C)	Brown (Spare)	-	No. 4 Terminal N.O. Contact	

Go Switch Harness (Cabin to Go Switch) P/No 77004 (Cabin Indicator Ladder Up/Down)

<u>Plug Term</u>	<u>Colour</u>		<u>Terminal ID.</u>	
(B)	Black	-	No. 1 Terminal N.C. Contact	Length 10m (Harness Flex No 12)
(B)	Black	-	No. 2 Terminal N.O. Contact	
(Bridge No. 1 and No. 2 in Go Switch)			No. 3 Terminal N.C. Contact	
(A)	Red	-	No. 4 Terminal N.O. Contact	
(C)	Yellow	-		

Hand Rail Switch Harness (P/No 77010) (Handrail SW to Power Pack Box)

<u>Plug Term</u>	<u>Colour</u>		<u>SW Contacts</u>		<u>Switch Terminal No.</u>	
(C)	Red/White	-	No 1	-	No 5	Length 10m (Harness Flex No 12)
(D)	Blue	-	No 2	-	No 4	
(B)	Yellow	-	No 3	-	No 2	
(A)	Green	-	No 4	-		



WIRING HARNESS 2


Wiring Harness

0201-02
Sheet 6

Go Switch
Auto - Raise Connection

N.C.	—	Orange	—	Blue
N.O.	—	Brown	—	White (Spare)

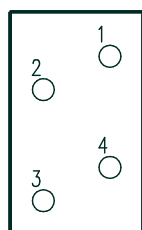
Go Switch - Cabin Indicator
Up/Down Lights Connection

N.C.	—	Red	—	Black	 Linked
N.O.	—	Yellow	—	Black	

Hand Control Switch - Mounted on Hand Rails (P/No 73013)
Power Step Wiring Harness (10m) and Connections Supplied

Contacts				
1	—	Red/White	—	Power Supply
2	—	Blue	—	Up Switch
3	—	Yellow	—	Down Switch
4	—	Green	—	Start Sol Motor [FRS Power Pack only (Spare)]

Pendant Switch
Standard Switch Wiring and Connections



INSERT ONLY

Ground Access Up/Down Switch Kit

(with harness and “Y” harness joint)

PS-77020





WARNING

**DO NOT REPAIR, STRAIGHTEN, REWELD OR ATTEMPT TO FIX THE LADDER
AFTER IT SUSTAINED ANY DAMAGE**

**CONTACT POWER STEP OR ITS LOCAL AREA REPRESENTATIVE TO
REQUEST A REPLACEMENT LADDER**

**IF THE LADDER MATERIAL IS BENT, TWISTED OR CRACKED YOU MUST
REPORT THE INCIDENT TO POWER STEP SO PROPER REMEDIAL ACTION IS
TAKEN TO ADDRESS THE DAMAGE**

**POWER STEP DESIGNED AND FABRICATED THIS PRODUCT UNDER
SPECIFIC STANDARDS AND GUIDELINES; ANY CHANGES OR
MODIFICATIONS WILL JEOPARDISE MATERIAL PROPERTIES AND SAFETY
OF THE PRODUCT**

CONTACT

POWER STEP (AUSTRALIA) PTY LTD

TEL: +61 7 32773977

FAX: +61 7 32773994

EMAIL: sales@powerstep.com.au