

FOLDING STAIRWAY

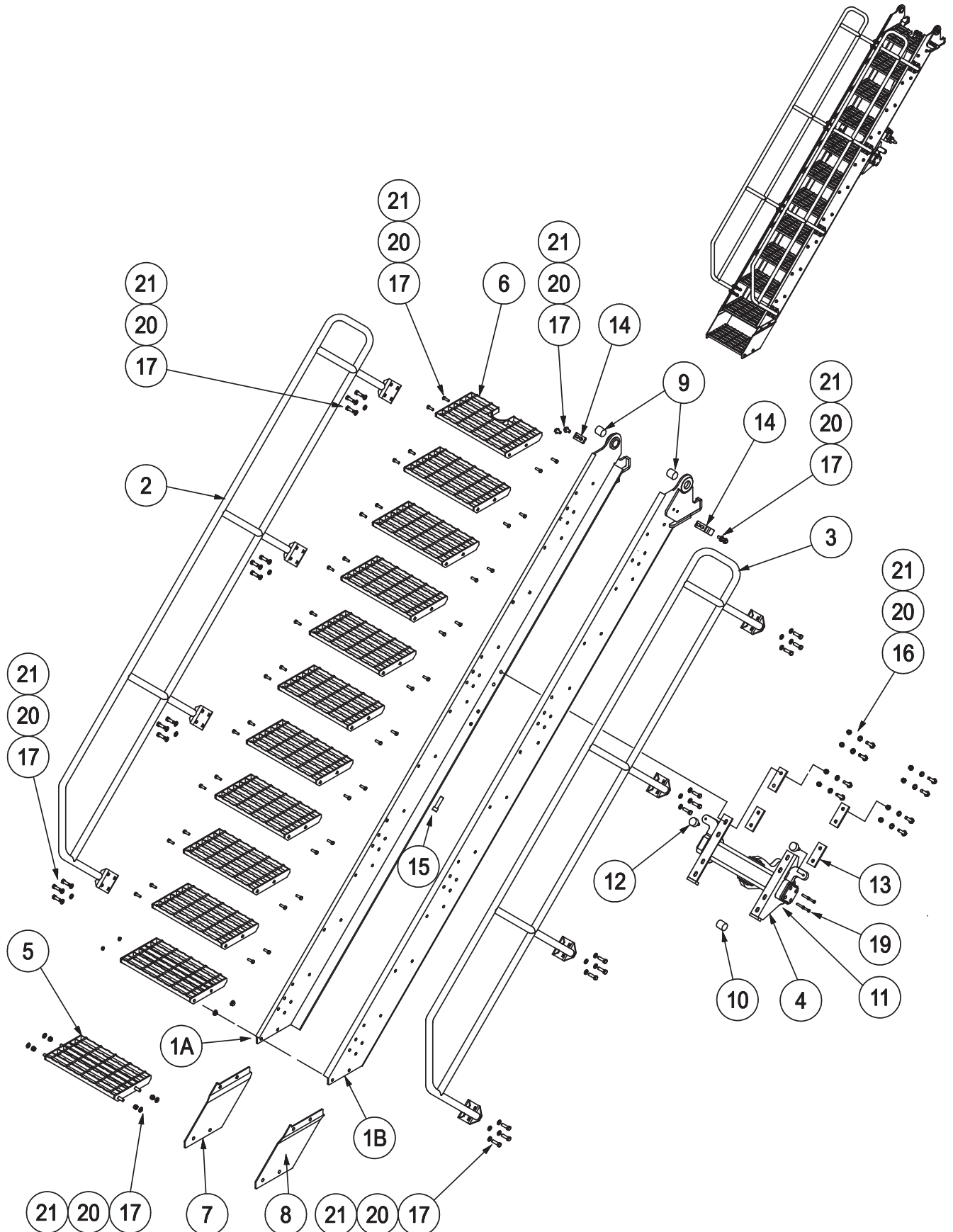
LeTourneau L1850 Wheel Loader



Section 4-2 Stair Assembly

PSA-STR-A07

See Parts List Page 17



FOLDING STAIRWAY

LeTourneau L1850 Wheel Loader



Section 5-2 Stair Assembly

PSA-STR-A07

See Drawing Page 16

Item	Part No.	Part Name	Qty		
1A	PS-STR-B11-01	STAIR STILE - LEFT HAND	1		
1B	PS-STR-B11-02	STAIR STILE - RIGHT HAND	1		
2	PS-HRI-B06-02	STAIR HANDRAIL - LEFT HAND	1		
3	PS-HRI-B06-01	STAIR HANDRAIL - RIGHT HAND	1		
4	PS-STR-B10	STAIR ACTUATOR BEAM	1		
5	PS-STR-C21-01	STAIR TREAD	11		
6	PS-STR-C21-02	STAIR TREAD -TOP	1		
7	PS-STR-C71	LADDER EXTENSION-LHS	1		
8	PS-STR-C70	LADDER EXTENSION-RHS	1		
9	PS-P30-008-02	PIVOT BUSH	2		
10	PS-HYD-C12	BUSH- (Actuator Beam)	1		
11	PS-STR-C62	BUMPER PAD (Rubber)	2		
12	PS-34108	BUFFER-RUBBER	2		
13	PS-23637	WASHER PLATE	8		
14	PS-FRA-C42	STRIKER	2		
15	CPS-M16X70ZP	BOLT-M16 x 70 CAP SCREW	2		
16	CPS-M12X50P	BOLT-M12 x 50	8		
17	CPS-M12X35P	BOLT-M12 x 35	80		
18	CPS-M12X20P	BOLT-M12 x 20	4		
19	CPS-M8X40ZP	BOLT-M8 x 40 CAPSCREW	8		
20	CPS-M12NZP	NUT-M12	88		
21	CPS-M12WH	WASHER-HARDENED-M12	176		

FOLDING STAIRWAY

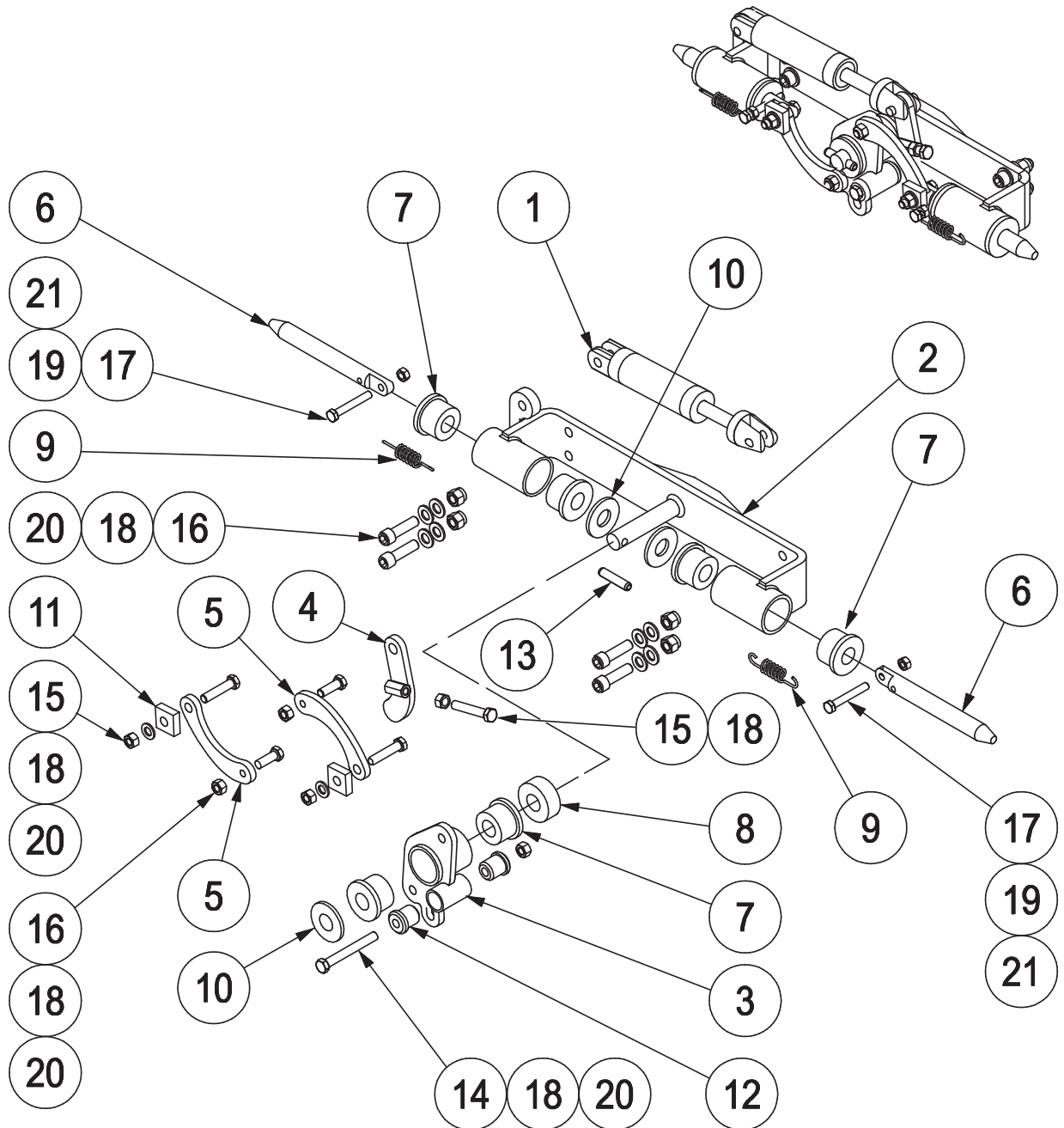
LeTourneau L1850 Wheel Loader



Section 4-3 Latch Assembly

PSA-LOC-A07

See Parts List Pg.19



FOLDING STAIRWAY

LeTourneau L1850 Wheel Loader



Section 4-3 Latch Assembly

PSA LOC- A07

See Drawing Page 20

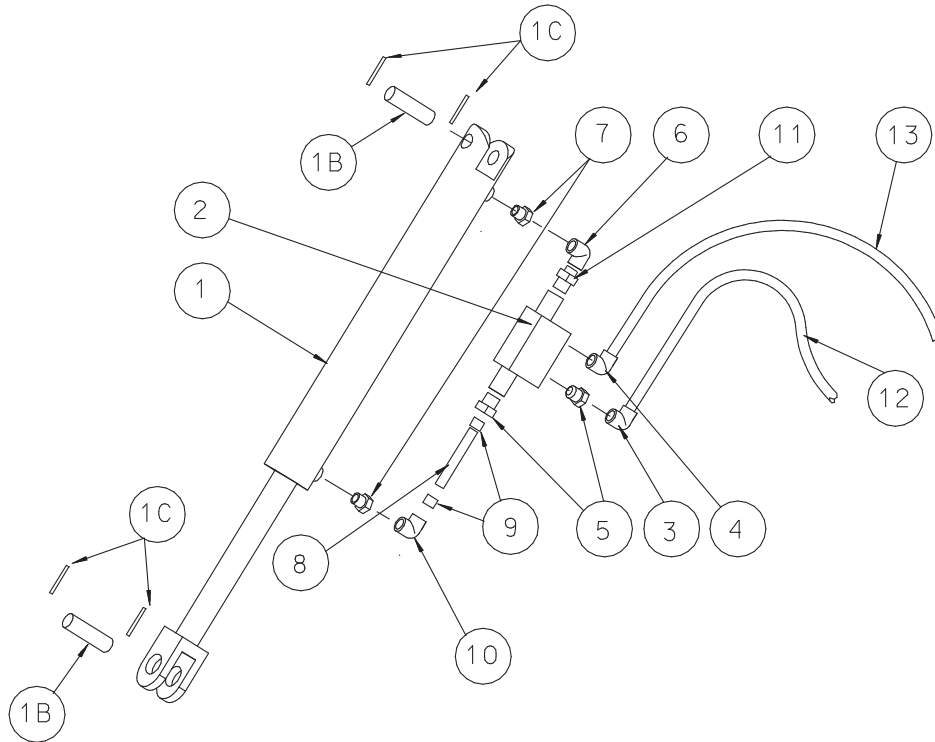
Item	Part No.	Part Name	Qty		
1	PS-62997	CYLINDER	1		Refer Pg 20
2	PS-LOC-B03	LATCH FRAME	1		
3	PS-LOC-B05	LATCH WRIST FABRICATION	1		
4	PS-LOC-B04	ACTUATOR ARM FABRICATION	1		
5	PS-LOC-C23	BOLT LINK	2		
6	PS-LOC-C24	LOCK PIN	2		
7	PS-LOC-C35	LATCH BUSH (Polyurethane)	6		
8	PS-LOC-C31	WRIST SPACER	1		
9	PS-39009	SPRING	2		
10	PS-LOC-C29	WASHER	3		
11	PS-LOC-C49	ANTI-RATTLE WASHER	2		
12	PS-S245	LATCH BUSH-(WRIST PLATE)	2		
13	CPS-M10X70RP	ROLL PIN	1		
14	CPS-M12X100ZP	BOLT-M12 x 100	1		
15	CPS-M12X55ZP	BOLT-M12 x 55	3		
16	CPS-M12X35ZP	BOLT-M12 x 35	6		
17	CPS-M10X70ZP	BOLT-M10 x 70	2		
18	CPS-M12NZP	NUT-M12	10		
19	CPS-M10NZP	NUT-M10	2		
20	CPS-M12WH	WASHER-HARDENED-M12	20		
21	CPS-M10WH	WASHER-HARDENED-M10	4		

FOLDING STAIRWAY

LeTourneau L1850 Wheel Loader



Section 4-4 Hydraulic Cylinder & Plumbing Cyl. P/No. PS- 62998-AH



NOTE: HYDRAULIC CYLINDER ASSEMBLY P/No PS- 62998-AH includes Part No.s 1 to 11

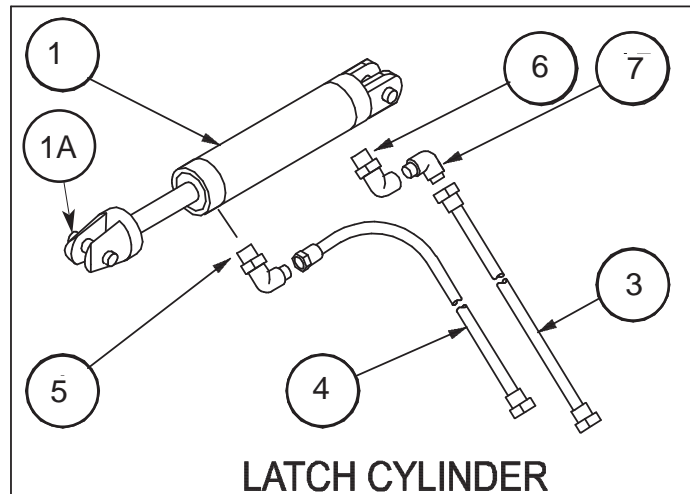
Item	Part No.	Part Name	Qty		
1	PS-62998-AH	HYDRAULIC CYL. (with hard plumbing)	1		
→	PS-62998-HPK	HARD PLUMBING KIT	1		
1A	PS-62998-A	HYDRAULIC CYLINDER 2 1/2"	1		
1B	PS-62998-P	PIN - CYLINDER	2		
1C	CPS-M4X50ZP	SPLIT PIN-M4-CLEVIS PIN-BOTTOM & TOP	4		
1S	PS-63103	SEAL KIT (Not shown)	1		
2	PS-63201	VALVE - PILOT OPERATED LOCKING	1		
3	PS-61159	FITTING - ELBOW-9/16" JIC	1		
4	PS-61154	FITTING - ELBOW- O RING 1/4BSPPx9/16"JIC	1		
5	PS-61157	FITTING - O RING 1/4BSPPx 9/16"JIC	2		
6	PS-61158-5MM	FITTING - 5mm RESTRICTION 90 DEG	1		CYL. END
7	PS61163	REDUCER JIC x BSPP	2		
8	PS-61160	TUBE (Cut to suit) 510mm	1		
9	PS-61147	FERRULES	2		
10	PS-61158-1MM	FITTING - 1MM RESTRICTION 90 DEG	1		ROD END
11	PS-61145	FITTING- 9/6"JIC SWIVEL	1		
12	PS-60051-3.5M	HOSE- HYDR. (9/6"JIC SWIVEL FITTING)	1		
13	PS-60050-3.5M	HOSE- HYDR. (7/6"JIC SWIVEL FITTING)	1		

FOLDING STAIRWAY

LeTourneau L1850 Wheel Loader



Section 4-4 Hydraulic Cylinder & Plumbing Latch PS- 62997-A



Item	Part No.	Part Name	Qty		
1	PS-62997	HYDRAULIC CYLINDER - LATCH	1		
1A	PS-62997-P	CYLINDER PIN	2		
2	PS-62997-SK	SEAL KIT-LATCH (NOT SHOWN)	1		
3	PS-60051-5M 9/16	HOSE-HYDR. (9/16" JIC ST. SWIVEL 5M)	1		
4	PS-60050-1.8M 7/16	HOSE-HYDR. (7/16" JIC ST. SWIVEL 5M)	1		
5	PS-61150	ELBOW-FITTING 7/16"	1		
6	PS-61152	ELBOW-FITTING 9/16"	1		
7	PS-61159	ELBOW-FITTING 9/16"	1		

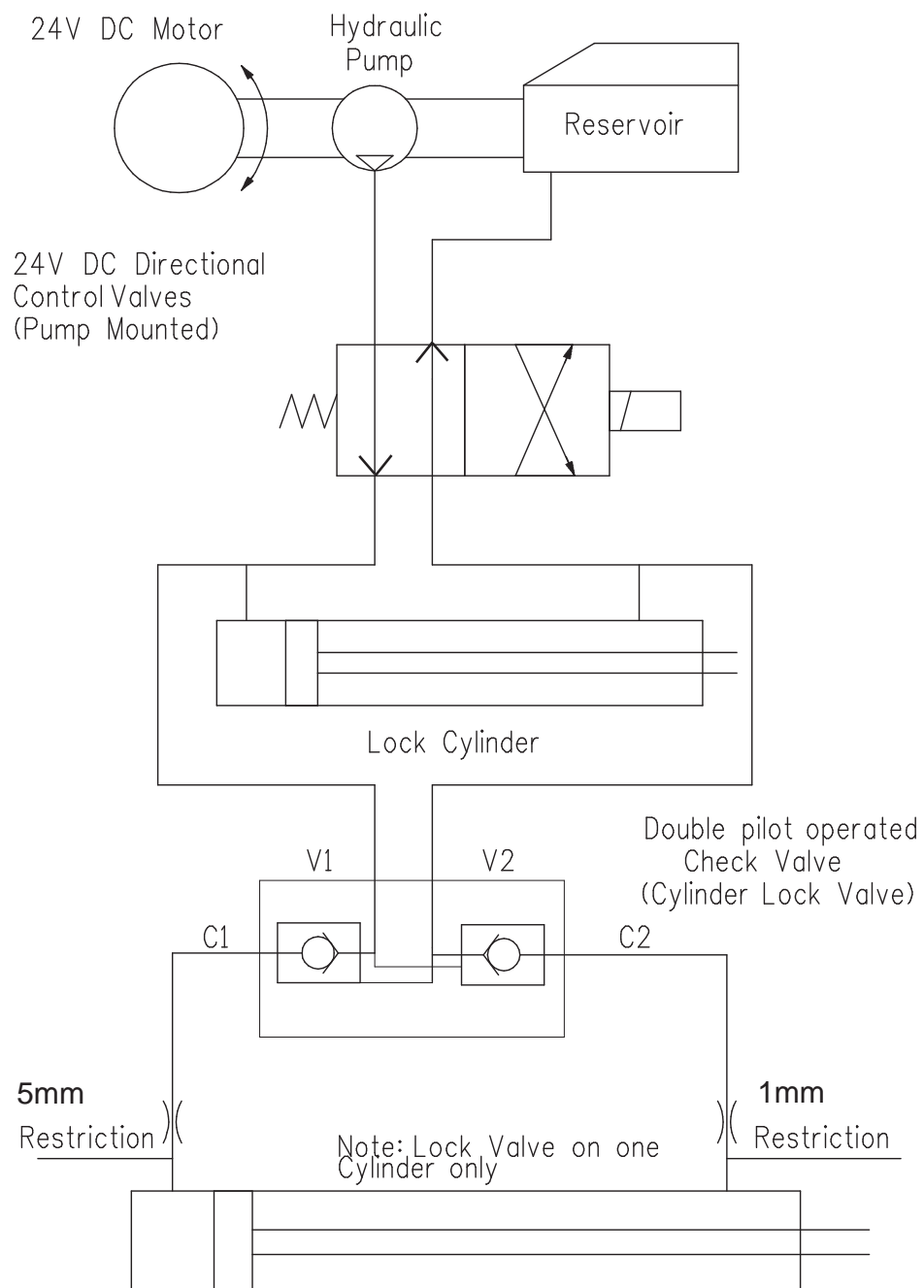
FOLDING STAIRWAY

LeTourneau L1850 Wheel Loader



Section 4-4 Hydraulics (Valve Diagram)

Double Acting Hydraulic System with
directional Control Valve and Cylinder
Lock Valve



FOLDING STAIRWAY

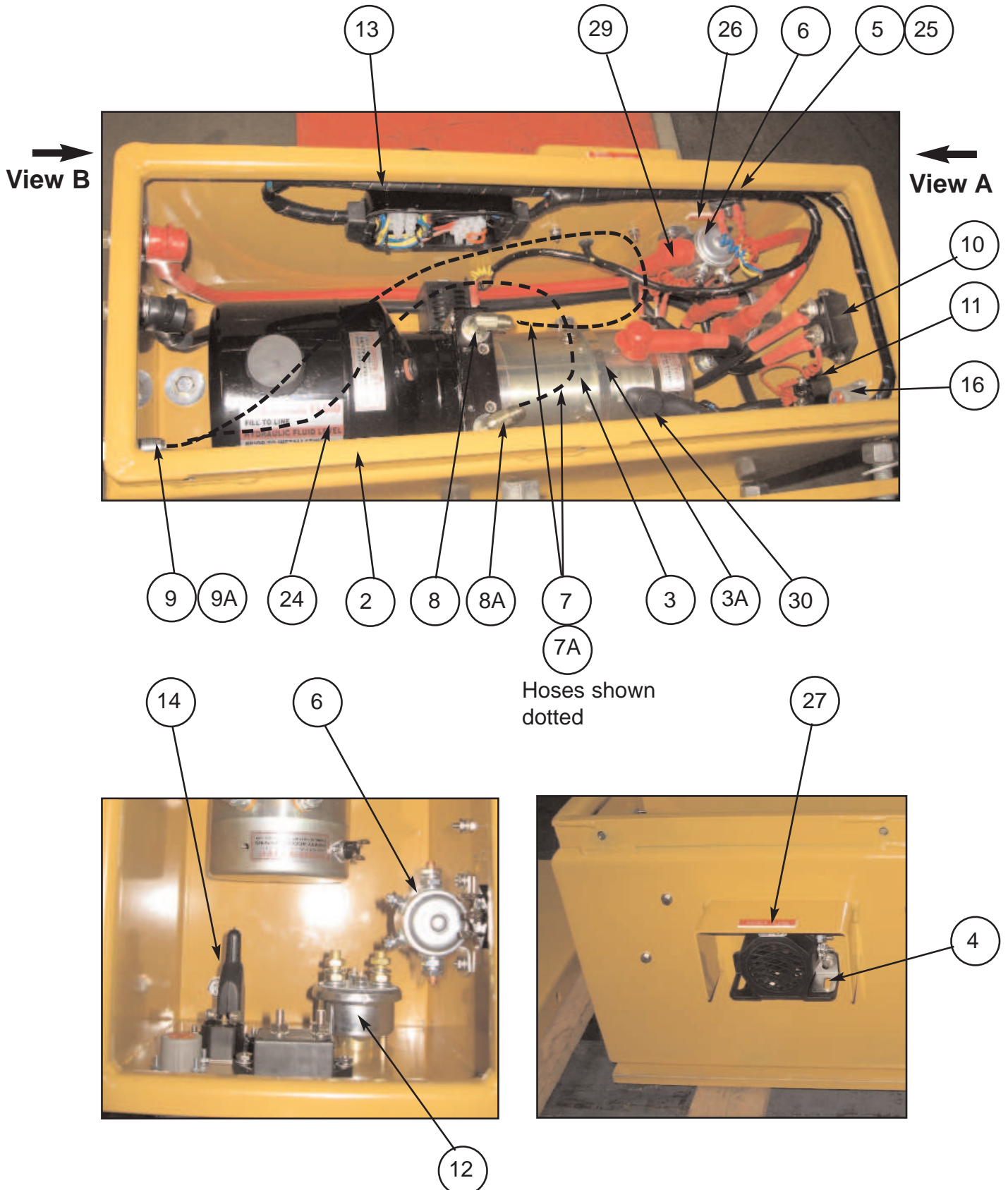
LeTourneau L1850 Wheel Loader



Section 4-5 Power Pack

PS- 80103A-SLD

See Parts List Pg 25



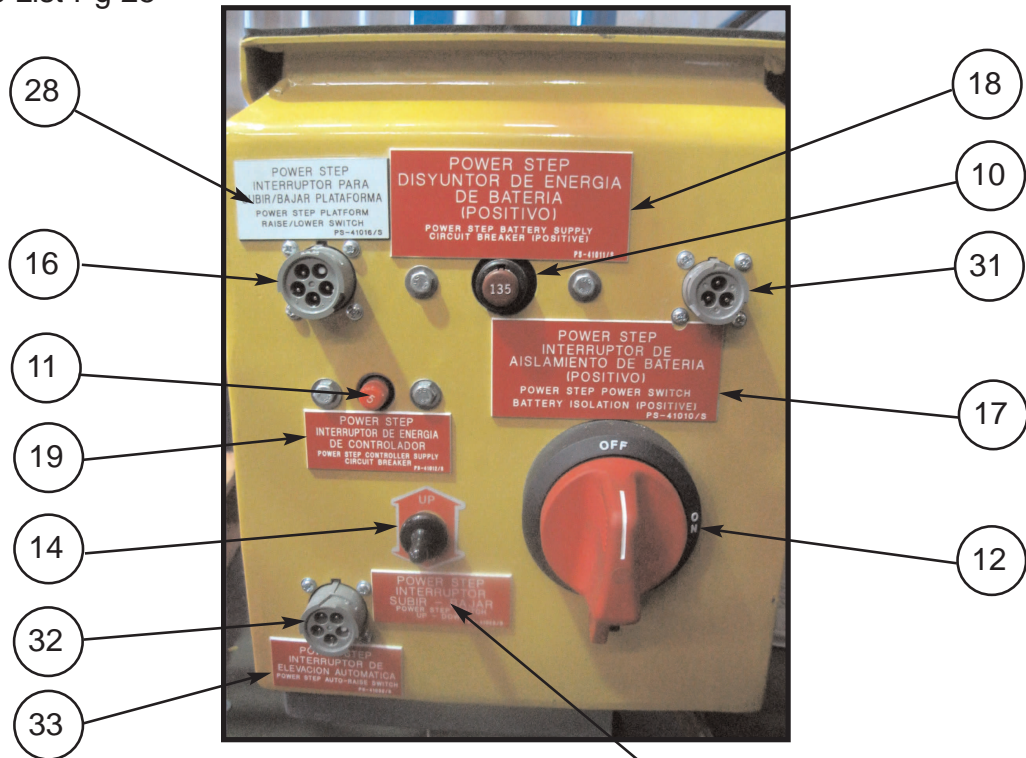
FOLDING STAIRWAY

LeTourneau L1850 Wheel Loader

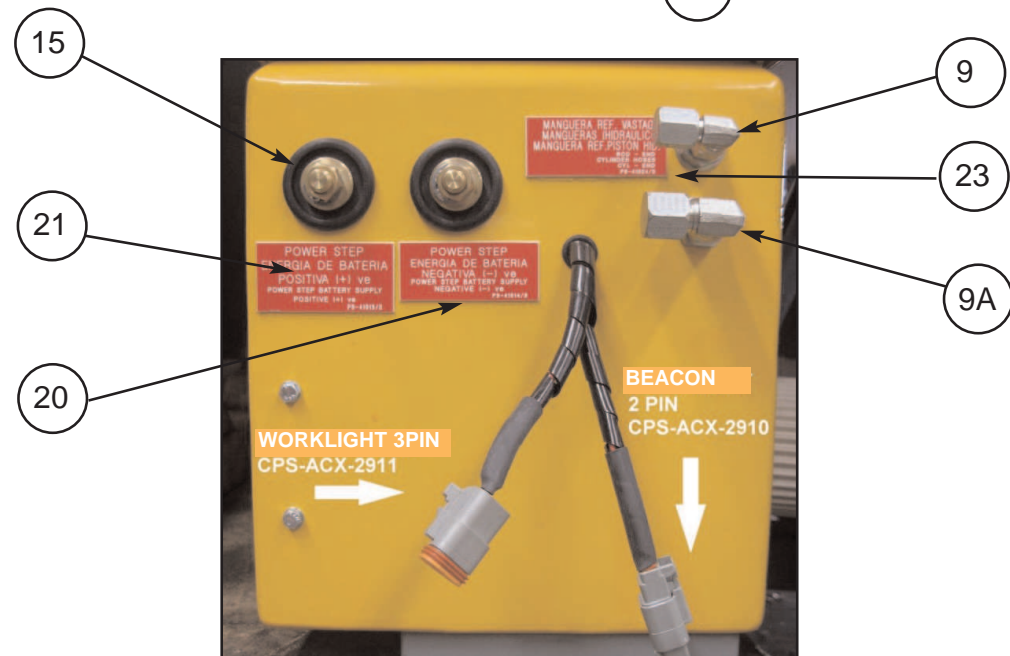
Section 4-5 Power Pack PS-80103A-SLD



See Parts List Pg 25



View A



View B

NOTE.

**THE RELIEF PRESSURE OF THE POWERPACK IS TO BE SET TO 2800PSI.
IF THE POWERPACK IS REPLACED, THIS RELIEF PRESSURE WILL NEED TO BE
RESET USING INLINE GAUGES.
FAILURE TO DO SO MAY RESULT IN ACCIDENT OR INJURY**

FOLDING STAIRWAY

LeTourneau L1850 Wheel Loader



Section 4-5 Power Pack

PS-80103A-SLD

See Photos Pg 23 & 24

Item	Part No.	Part Name	Qty		
1	PS-80103A-SLD	POWER PACK ASSEMBLY	1		
2	PS-21107-METAL	MOTOR ENCLOSURE- SEALED ST/ST	1		
3	PS-80103A	POWER PACK	1		
3A	PS-80103-CLAMP	CLAMP ELECTRIC MOTOR	1		
4	PS-82415	AUDIBLE ALARM	1		
5	PS-84214	BRIDGE RECTIFIER	1		
6	PS-82492	SOLENOID 24V START MOTOR	1		
7	PS-60051-900MM 9/16"	HYDR. HOSES 9/16" JIC STRAIGHT SWIVEL	1		
7A	PS-60050-900MM 7/16"	HYDR. HOSES 7/16" JIC STRAIGHT SWIVEL	1		
8	PS-61152	HYDRAULIC FITTING 9/16"	1		
8A	PS-61150	HYDRAULIC FITTING 7/16"	1		
9	PS-61177	HYDRAULIC FITTING 9/16"	1		
9A	PS-61176	HYDRAULIC FITTING 7/16"	1		
10	PS-84213	135A CIRCUIT BREAKER	1		
11	PS-84212	5A CIRCUIT BREAKER	1		
12	PS-84303	ISOLATION SWITCH- (INCLUDING BRACKET)	1		
13	PS-1712080	SEALED WIRING BOX	1		
14	PS-73012	TOGGLE SWITCH KIT	1		
15	PS-82493	BATTERY FEED STUDS	2		
16	PS-HD10-5-16P	5 PIN SOCKET	1		
17	PS-41010	DECAL-Battery Isolation	1		
18	PS-41011	DECAL-Battery Supply C/B-135A	1		
19	PS-41012	DECAL-Controller Supply C/B-5A	1		
20	PS-41013	DECAL-Battery Supply-Positive	1		
21	PS-41014	DECAL-Battery Supply-Negative	1		
22	PS-41023	DECAL-Up/Down	1		
23	PS-41024	DECAL HYDRAULIC-HOSES	1		
24	PS-41041	DECAL OIL TANK	1		
25	PS-41019	DECAL BRIDGE RECTIFIER	1		
26	PS-41017	DECAL SOLENOID	1		
27	PS-41018	DECAL ALARM	1		
28	PS-41016	DECAL RAISE/LOWER SWITCH	1		
29	PS-73010	RUBBER BOOT RED	4		
30	PS-73009	RUBBER BOOT BLACK	2		
31	PS-HD10-3-16P	3 PIN SOCKET (PARK BREAK)	1		
32	PS-HD10-5-16P	5 PIN SOCKET (AUTO-RAISE)	1		
33	PS-41032	DECAL AUTO-RAISE SOCKET	1		

FOLDING STAIRWAY

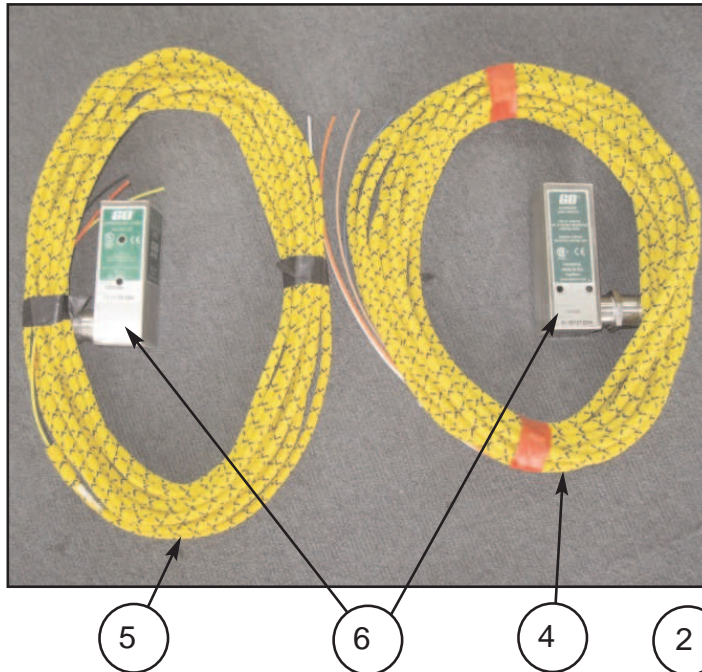
LeTourneau L1850 Wheel Loader



Section 4-6 Electrical Controls

Proximity Switch Assembly

Mounted on Fixed Landing

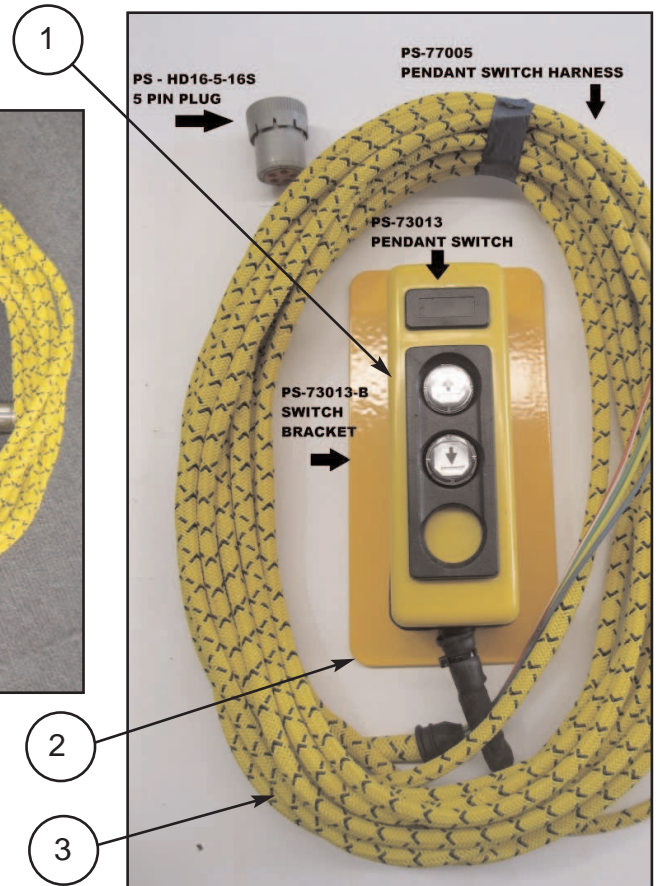


Cab Harness & Equipment

Refer Wiring Harness Drawings

Control Pendant Switch

Mounted on Handrail



FOLDING STAIRWAY

LeTourneau L1850 Wheel Loader



Section 4-6 Electrical Controls

See Page 26

Item	Part No.	Part Name	Qty		
1	PS-73013	CONTROL PENDANT SWITCH	1		
2	PS-73013-B	CONTROL PENDANT BRACKET	1		
3	PS-77005	HAND RAIL SWITCH HARNESS	1		
4	PS-77009AR	AUTO RAISE HARNESS	1		Optional only
5	PS-77004	CABIN TO SWITCH HARNESS	1		
6	PS-75430	PROXIMITY SWITCH	2		1 X Optional
7	PS-77002	CABIN BOX LED LIGHT INDICATOR	1		
8	PS-77003	WIRING HARNESS IN CABIN	1		

WARNING

LOW VOLTAGE BATTERIES WILL HARM THE FUNCTION OF THE POWER PACK AND THE CONTROL SWITCHES.

DAMAGE RESULTING DUE TO LOW VOLTAGE BATTERIES WILL VOID WARRANTY ON ALL ELECTRICAL COMPONENTS.

FOLDING STAIRWAY

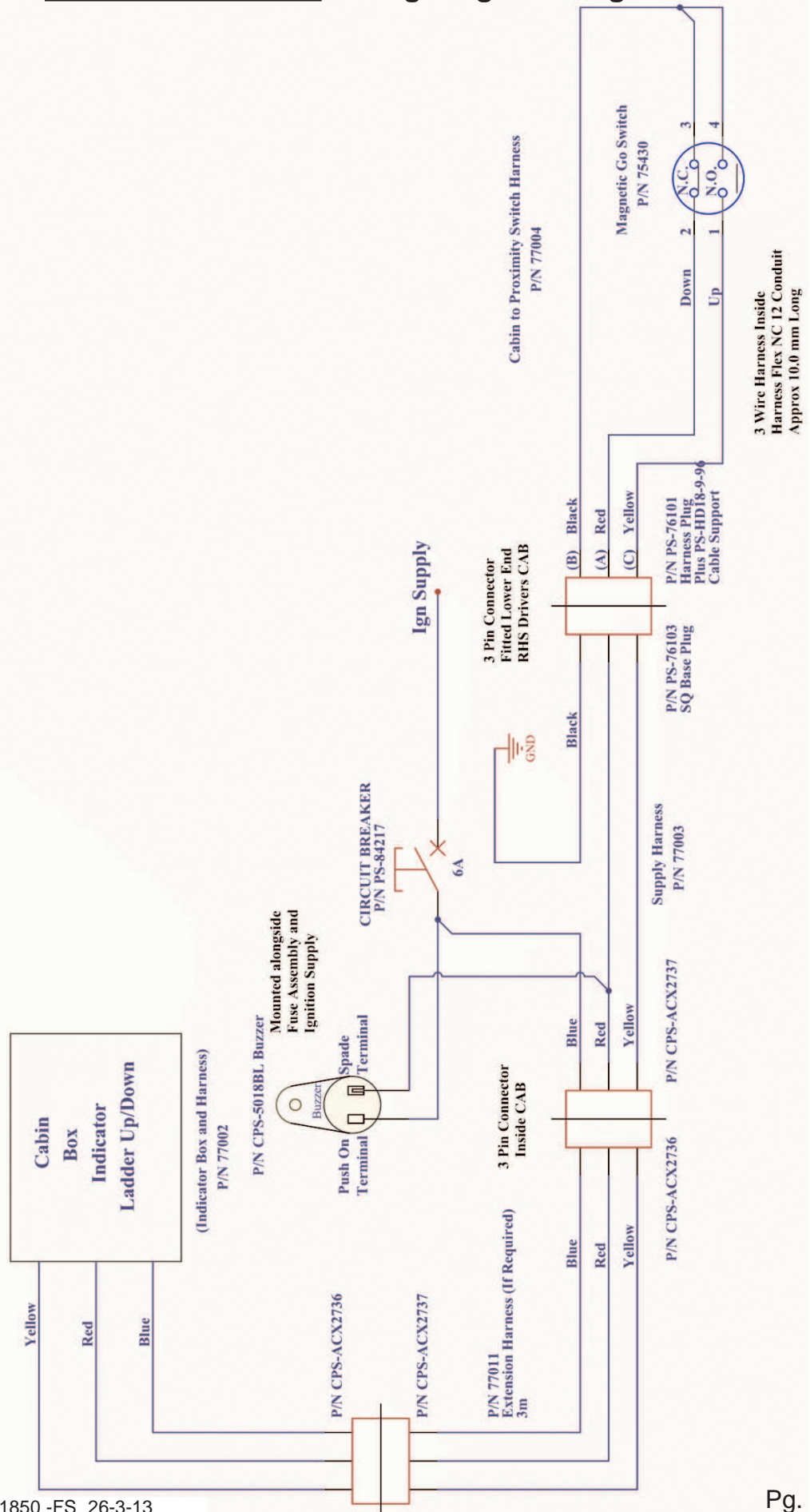
LeTourneau L1850 Wheel Loader



Section 4-6 Electrical Controls Wiring Diagrams Page 1

0201-02
Sheet 1

WIRING HARNESS



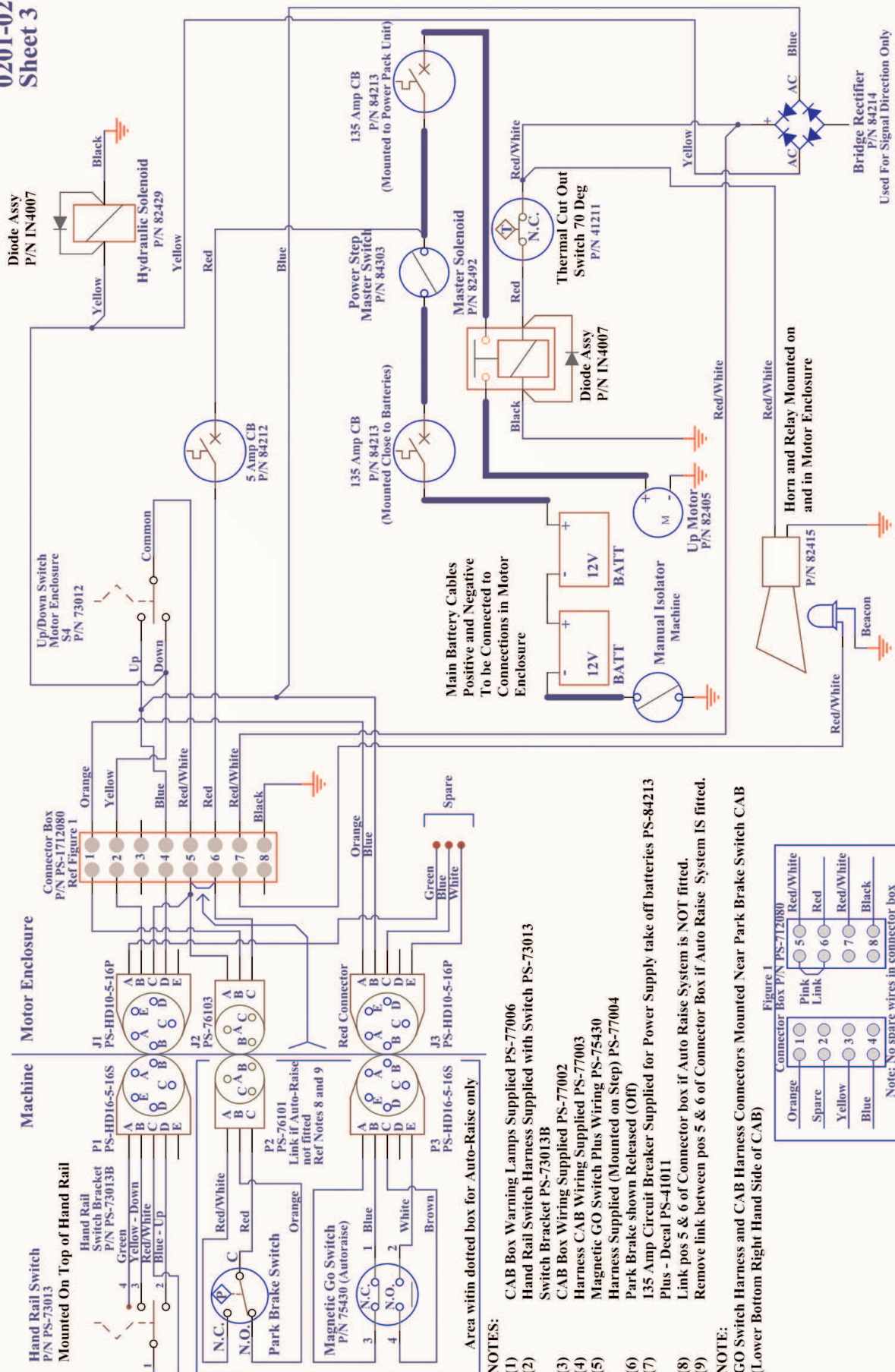
FOLDING STAIRWAY

LeTourneau L1850 Wheel Loader



Section 4-6 Electrical Controls Wiring Diagrams Page 2

0201-02
Sheet 3



NOTES:

- (1) CAB Box Warning Lamps Supplied PS-77006
- (2) Hand Rail Switch Harness Supplied with Switch PS-73013
- (3) Switch Bracket PS-73013B
- (4) CAB Box Wiring Supplied PS-77002
- (5) Harness CAB Wiring Supplied PS-77003
- (6) Magnetic GO Switch Plus Wiring PS-75430
- (7) Harness Supplied (Mounted on Step) PS-77004
- (8) Park Brake shown Released (Off)
- (9) 135 Amp Circuit Breaker Supplied for Power Supply take off batteries PS-84213 Plus - Decal PS-41011

- (8) Link pos 5 & 6 of Connector box if Auto Raise System is NOT fitted.
- (9) Remove link between pos 5 & 6 of Connector Box if Auto Raise System IS fitted.

NOTE:

GO Switch Harness and CAB Harness Connectors Mounted Near Park Brake Switch CAB (Lower Bottom Right Hand Side of CAB)

FOLDING STAIRWAY

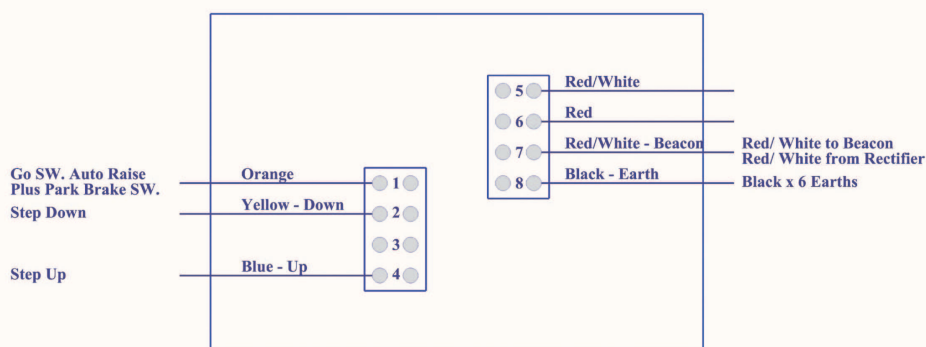
LeTourneau L1850 Wheel Loader



Section 4-6 Electrical Controls Wiring Diagrams Page 3

WIRING HARNESS 1

0201-02
Sheet 5



Park Brake Harness - P/No 77006-PB

<u>Plug Term</u>	<u>Colour</u>		<u>Terminal ID.</u>	
(C)	Red	-	COM	
(A)	Red/White	-	N.C.	
(B)	Orange	-	N.O.	

Length 10m
(Harness Flex No 12)

Go Switch Harness (Auto Raise) P/No 77009-AR

<u>Plug Term</u>	<u>Colour</u>		<u>Terminal ID.</u>	
(B)	Blue	-	No. 1 Terminal N.C. Contact	
(E)	White (Spare)	-	No. 2 Terminal N.O. Contact	
(A)	Orange	-	No. 3 Terminal N.C. Contact	
(C)	Brown (Spare)	-	No. 4 Terminal N.O. Contact	

Length 10m
(Harness Flex No 12)

Go Switch Harness (Cabin to Go Switch) P/No 77004 (Cabin Indicator Ladder Up/Down)

<u>Plug Term</u>	<u>Colour</u>		<u>Terminal ID.</u>	
(B)	Black	-	No. 1 Terminal N.C. Contact	
(B)	Black	-	No. 2 Terminal N.O. Contact	
(Bridge No. 1 and No. 2 in Go Switch)				
(A)	Red	-	No. 3 Terminal N.C. Contact	
(C)	Yellow	-	No. 4 Terminal N.O. Contact	

Length 10m
(Harness Flex No 12)

Hand Rail Switch Harness (P/No 77010) (Handrail SW to Power Pack Box)

<u>Plug Term</u>	<u>Colour</u>		<u>SW Contacts</u>		<u>Switch Terminal No.</u>	
(C)	Red/White	-	No 1	-	No 5	
(D)	Blue	-	No 2	-	No 4	
(B)	Yellow	-	No 3	-	No 2	
(A)	Green	-	No 4	-		

Length 10m
(Harness Flex No 12)

FOLDING STAIRWAY

LeTourneau L1850 Wheel Loader



Section 4-6 Electrical Controls Wiring Diagrams Page 4

WIRING HARNESS 2

0201-02
Sheet 6

Wiring Harness

Go Switch

Auto - Raise Connection

N.C.	-	Orange	-	Blue
N.O.	-	Brown	-	White (Spare)

Go Switch - Cabin Indicator

Up/Down Lights Connection

N.C.	-	Red	-	Black	Linked
N.O.	-	Yellow	-	Black	

Hand Control Switch - Mounted on Hand Rails (P/No 73013)

Power Step Wiring Harness (10m) and Connections Supplied

Contacts

1	-	Red/White	-	Power Supply
2	-	Blue	-	Up Switch
3	-	Yellow	-	Down Switch
4	-	Green	-	Start Sol Motor [FRS Power Pack only (Spare)]

Pendant Switch

Standard Switch Wiring and Connections

